

A Update following review	SI	11/17
Revision	App	Date
Surveyed -		
Designed CY		Oct-17
Drawn CY		Oct-17
Reviewed SK		01-Nov-17
Approved SI		01-Nov-17



Verify all dimensions on site before commencing work. Prioritise figured dimensions over scaling. Refer all discrepancies to Calibre. This document and the copyright in this document remain the property of Calibre Consulting Limited. The contents of this document may not be reproduced either in whole or in part by any means whatsoever without the prior written consent of Calibre Consulting Limited.

Client
Absolutely Positively Wellington City Council
 Me Heke Ki Pōneke

Project Title
 Eastern Suburbs Cycleway
 Kilbirnie Connections

Sheet Title
 Constable Street
 Traffic Resolution Plan

Level 13, Kordia House
 109-125 Willis Street, Wellington 6011
 calibregroup.com
 +64 4 384 2029

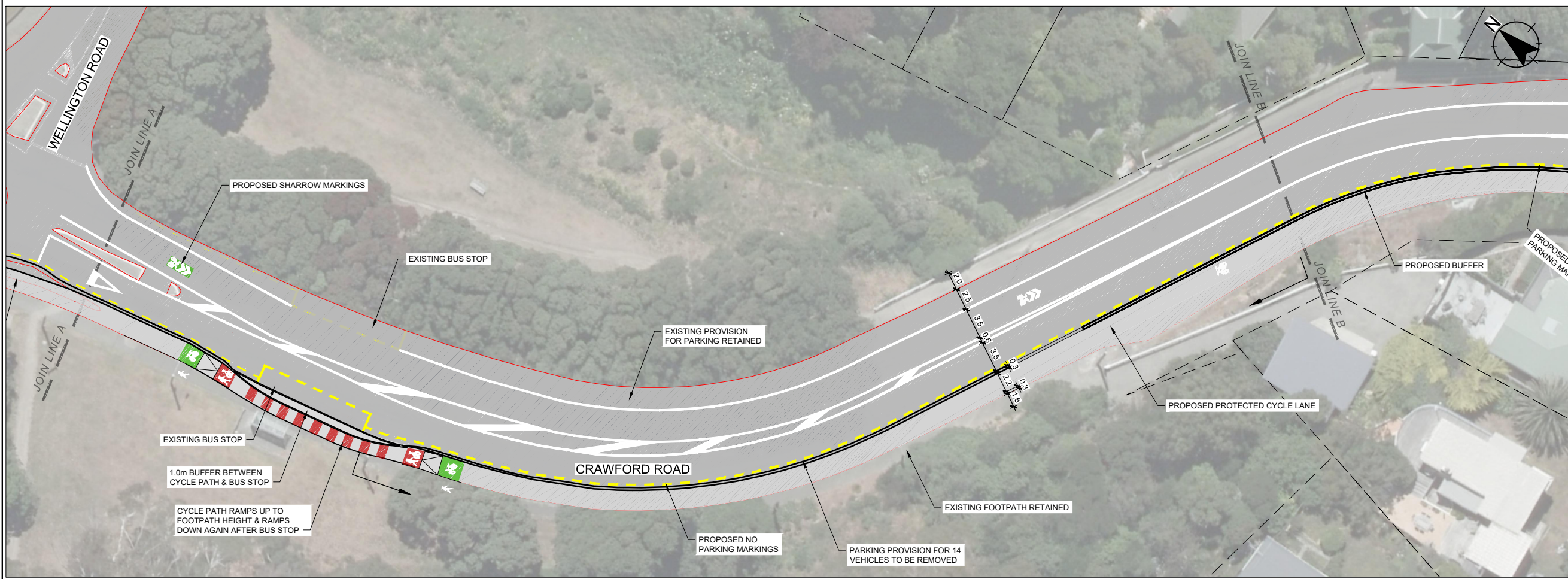
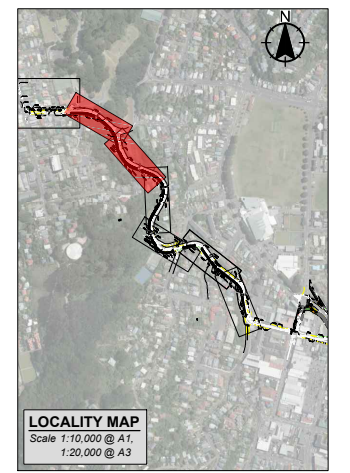
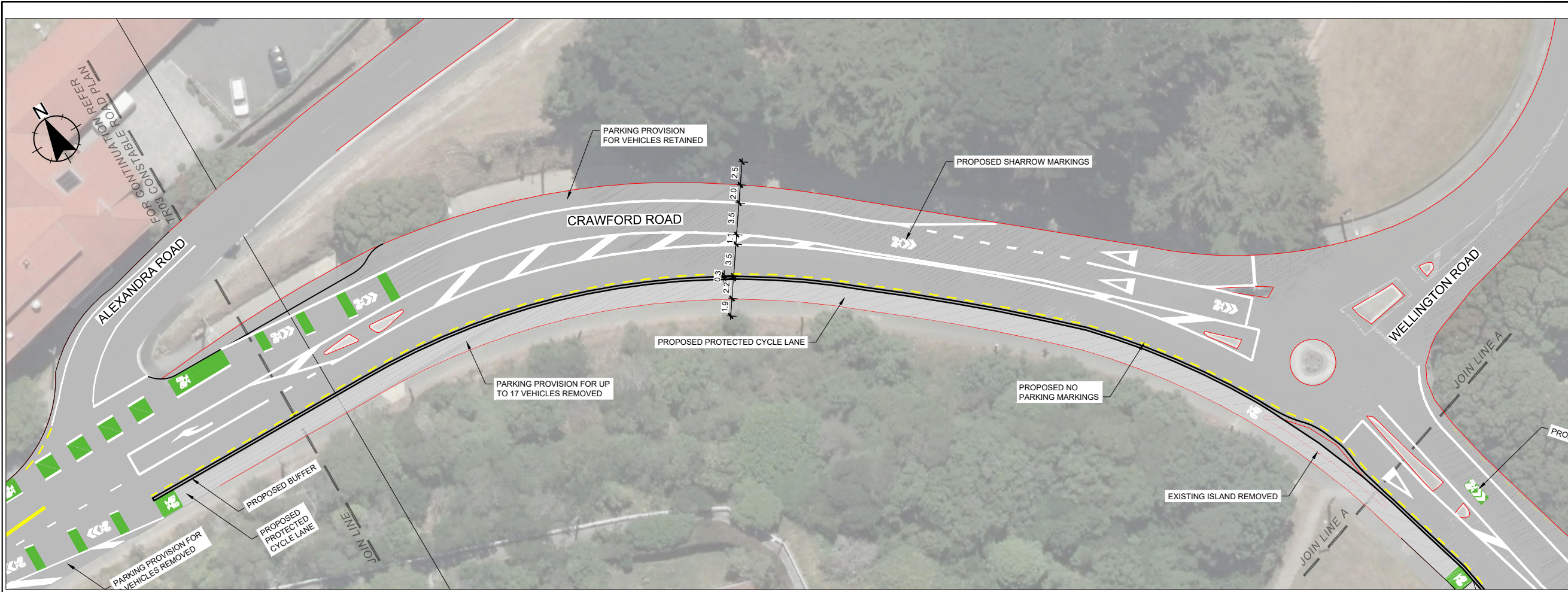


Scale (A1 Original) 1:250 (A3) 1:500



Project No Sheet Revision

709549.002 TR03 A



B Updated following Safety Audit	SI	23/02/18
A Update following review	SI	11/17
Revision	App	Date
Surveyed -		
Designed PV		Oct-17
Drawn PV/MTF		Oct-17
Reviewed SK		01-Nov-17
Approved SI		01-Nov-17



Verify all dimensions on site before commencing work. Prioritise figured dimensions over scaling. Refer all discrepancies to Calibre. This document and the copyright in this document remain the property of Calibre Consulting Limited. The contents of this document may not be reproduced either in whole or in part by any means whatsoever without the prior written consent of Calibre Consulting Limited.

Client
Absolutely Positively Wellington City Council
 Me Heke Ki Pōneke

Project Title
 Eastern Suburbs Cycleway
 Kilbirnie Connections

Sheet Title
 Crawford Road
 Traffic Resolution Plan
 Sheet 1 of 3

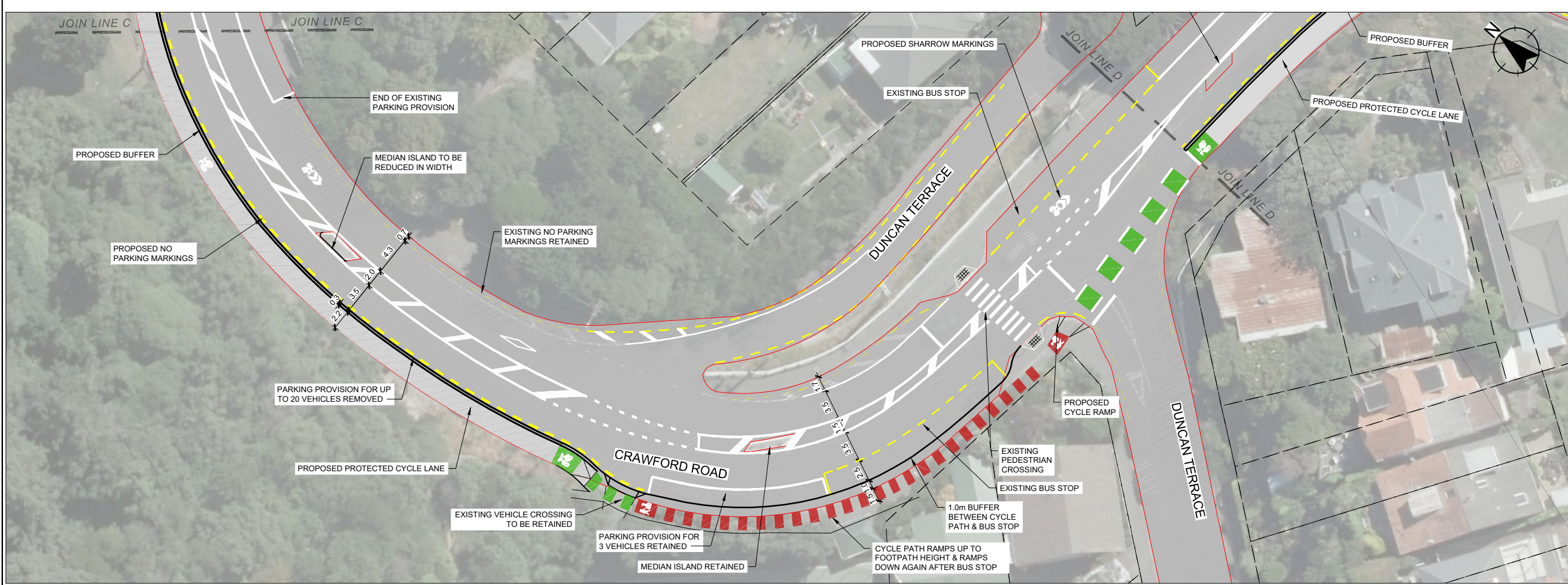
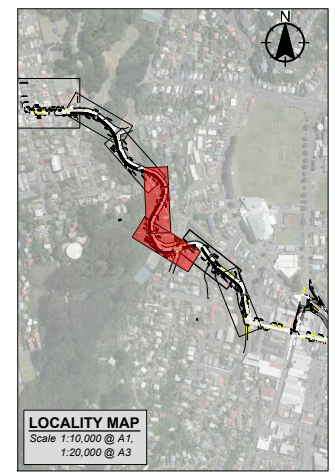
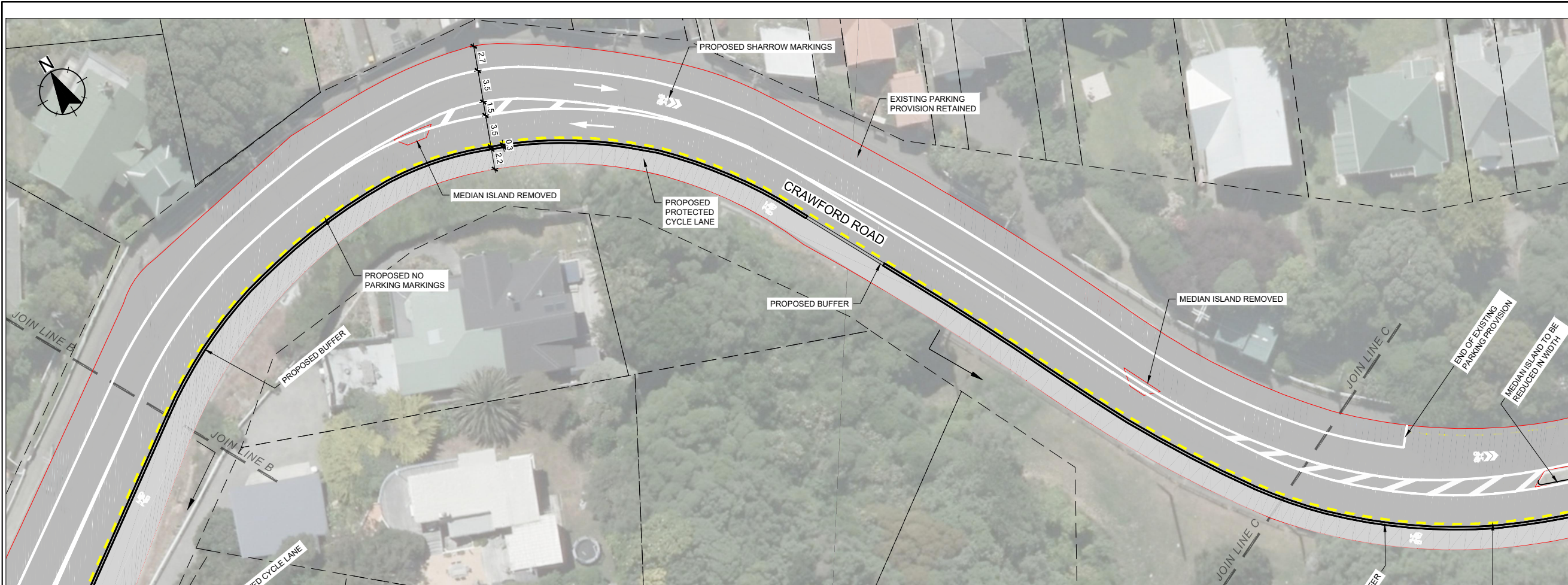
Level 13, Kordia House
 109-125 Willis Street, Wellington 6011
 calbregroup.com
 +64 4 384 2029



Scale (A1 Original) 1:250 (A3) 1:500



Project No 709549.002 Sheet TR04-1 Revision B



B Updated following Safety Audit	SI	23/02/18
A Update following review	SI	11/17
Revision	App	Date
Designed	PV	Oct-17
Drawn	PV/MTF	Oct-17
Reviewed	SK	01-Nov-17
Approved	SI	01-Nov-17

Verify all dimensions on site before commencing work. Prioritise figured dimensions over scaling. Refer all discrepancies to Calibre. This document and the copyright in this document remain the property of Calibre Consulting Limited. The contents of this document may not be reproduced either in whole or in part by any means whatsoever without the prior written consent of Calibre Consulting Limited.

Client
Absolutely Positively Wellington City Council
 Me Heke Ki Pōneke

Project Title
 Eastern Suburbs Cycleway
 Kilbirnie Connections

Sheet Title
 Crawford Road
 Traffic Resolution Plan
 Sheet 2 of 3

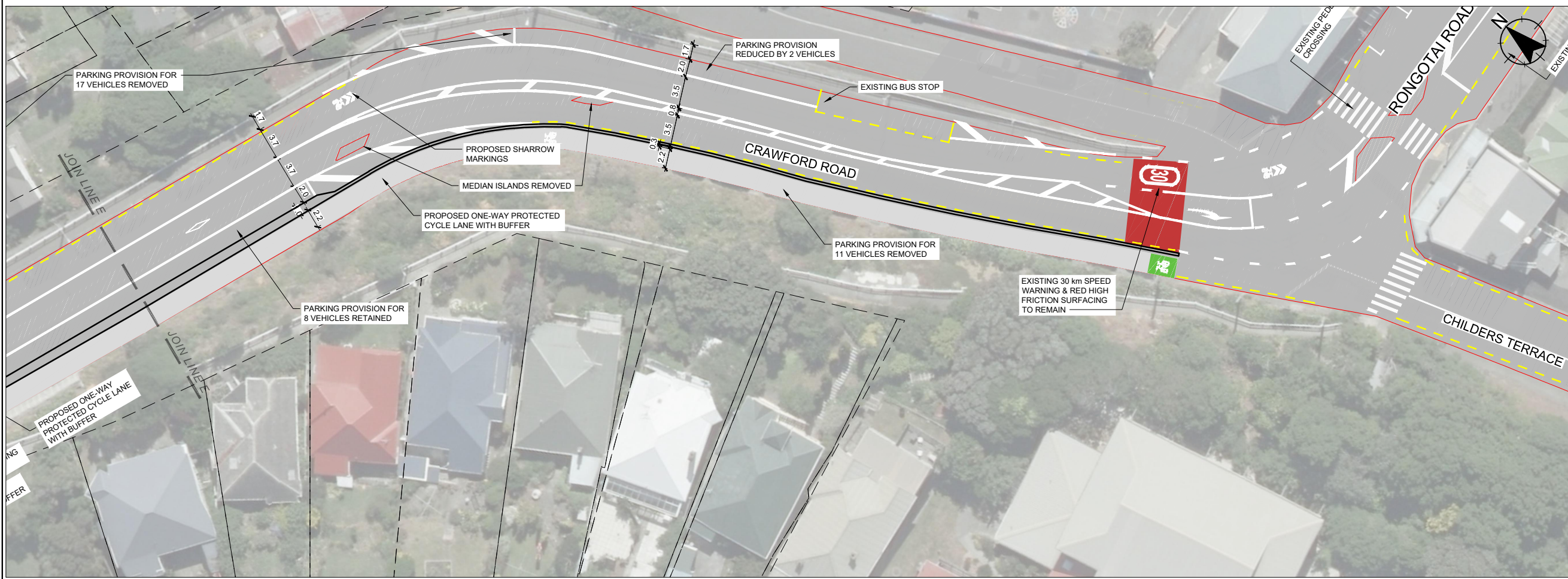
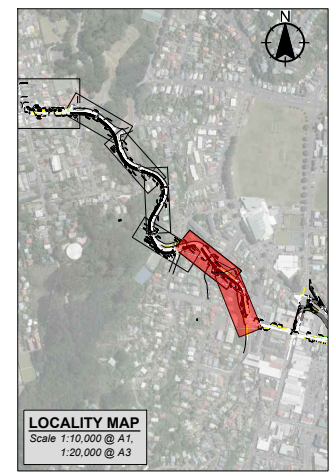
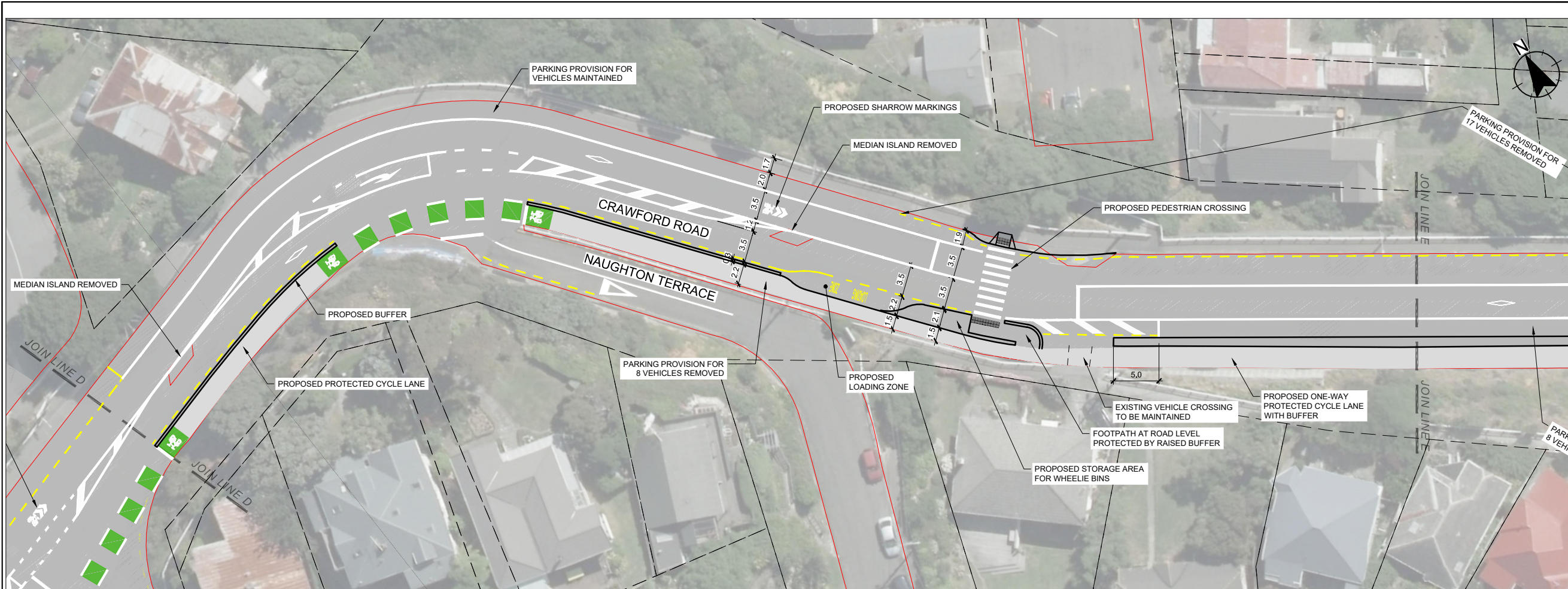
Level 13, Kordia House
 109-125 Willis Street, Wellington 6011
 calbregroup.com
 +64 4 384 2029



Scale (A1 Original) 1:250 (A3) 1:500



Project No 709549.002 Sheet TR04-2 Revision B



C Updated to parking	SI	05/03/18
B Updated following Safety Audit	SI	23/02/18
A Update following review	SI	11/17
Revision	App	Date
Surveyed -		
Designed PV		Oct-17
Drawn PV/MTF		Oct-17
Reviewed SK		01-Nov-17
Approved SI		01-Nov-17



Verify all dimensions on site before commencing work. Prioritise figured dimensions over scaling. Refer all discrepancies to Calibre. This document and the copyright in this document remain the property of Calibre Consulting Limited. The contents of this document may not be reproduced either in whole or in part by any means whatsoever without the prior written consent of Calibre Consulting Limited.

Client
Absolutely Positively
Wellington City Council
 Me Heke Ki Pōneke

Project Title
 Eastern Suburbs Cycleway
 Kilbirnie Connections

Sheet Title
 Crawford Road
 Traffic Resolution Plan
 Sheet 3 of 3

Level 13, Kordia House
 109-125 Willis Street, Wellington 6011
 calbregroup.com
 +64 4 384 2029



Scale (A1 Original) 1:250 (A3) 1:500



Project No 709549.002 Sheet TR04-3 Revision C