

## TR180-22 Ngaio Transitional bike and pedestrian improvements.

Kia ora,

This leaflet is to let you know about a change we are proposing to make in your neighbourhood.

### Proposal:

<b>Reference</b>	TR180-22 Ngaio Transitional Cycleway. Proposed cycle lanes, new pedestrian crossings and parking changes.
<b>Location – where we propose to make the change</b>	<ul style="list-style-type: none"> <li>• Kaiwharawhara Road, Old Porirua Road, Ngaio Gorge Road, Kenya Street, Crofton Road, Cameron Street, Sargeson Way, Marsh Way.</li> <li>• Suburbs of Kaiwharawhara and Ngaio, Wellington.</li> </ul>
<b>What we'd like to do</b>	<p>Proposed changes along Kaiwharawhara Road will be made over three stages (2023, 2024, and 2025) to give people using this route and local businesses time to adapt to these proposed changes.</p> <p><b>Kaiwharawhara Road</b></p> <ul style="list-style-type: none"> <li>• Install a 4pm-7pm, 7 days Clearway on the southern side of Kaiwharawhara Road for 145 metres (from Hutt Road to No.25 Kaiwharawhara Road) in 2023.</li> <li>• Install 320 metres of cycle lane from No.25 Kaiwharawhara Road to No.53 Kaiwharawhara Road (Capital Auto Electrics Ltd) in 2023 where there is currently unrestricted parking.</li> <li>• Install a P10 loading zone with a Clearway from 4pm-7pm, 7 days, for 30 metres outside Nos.53 and 55 Kaiwharawhara Road (Capital Auto Electrics Ltd and Hanging Around) in 2023 where there is currently unrestricted parking.</li> <li>• Install four P30 carparking spaces with a Clearway from 4pm-7pm, Monday to Sunday on Kaiwharawhara Road (west of the loading zone outside No.57 Kaiwharawhara Road) in 2023 where there are currently unrestricted parking spaces.</li> <li>• Install a cycle lane and No Stopping Restriction with broken yellow lines, (BYLs) in 2023 from the new P30 carparks on Kaiwharawhara Road along the remainder of the southern side of Kaiwharawhara Road westward to the slip stabilisation work. This work will tie in with 480 metres of cycle lane being built as part of the Ngaio Gorge slip stabilisation work (due for completion in Dec 2022).</li> <li>• In January/February 2024, we are proposing to extend the Clearway times on the southern side of Kaiwharawhara Road (from Hutt Road to No.25 Kaiwharawhara Road and from Nos.53 to 57 Kaiwharawhara Road from 4pm-7pm to 2pm-9pm to increase the safety benefits to cyclists while continuing to give businesses time to adapt to the changes.</li> </ul>

- In January/February 2025, we are proposing to install cycle lanes on the two sections of clearway along Kaiwharawhara Road outlined above (from Hutt Road to No.25 Kaiwharawhara Road and Nos.53 to 57 Kaiwharawhara Road).
- In January/February 2025, install 5metres of No Stopping Restriction (BYLs) section outside No.19 Kaiwharawhara Road where a new pedestrian crossing will be built (2023).
- In January/February 2025, install 8.5metres of No Stopping Restriction (BYLs) section outside No.24-28 Kaiwharawhara Road where a new pedestrian crossing will be built (2023).

#### **Old Porirua Road**

- Install No Stopping Restriction (BYLs) for 8 metres extending from the limit line where Old Porirua Road meets Kaiwharawhara Road (2023).

#### **Ngaio Gorge Road**

- Install an uphill cycle lane with No Stopping Restriction (BYLs) for 950 metres from the bottom of Ngaio Gorge Road to the intersection with Trelissick Cres at Kenya Street (2023).
- Install a raised pedestrian crossing between No.5 and No.7 Ngaio Gorge Road (2023).

#### **Kenya Street and Crofton Road (2023)**

- Install 700 metres of cycle lane in the uphill direction, from Waikowhai Street roundabout westward to Crofton Road and extending along Kenya Street (heading towards the city).
- Install No Stopping Restriction (BYLs) for 36 metres on the bend outside Nos.54, 56, and 58 Kenya Street extending to the existing bus stop by removing 4 unrestricted carparks.
- Install No Stopping Restriction (BYLs) to replace an existing P30 carpark outside No.2 Kenya Street outside a Takeaways shop.
- Convert one unrestricted carpark space to a P10 carpark outside No.6 Kenya Street.
- Extend the Ngaio Village 30 kph speed limit zone by 337 metres from No.11 Ottawa Road to No.6 Kenya Street.

#### **Cameron Street (2023)**

- Convert four unrestricted carparks outside No.6 Cameron St to four P60 carparks.
- Convert seven unrestricted carparks outside Nos.8 – 14 Cameron Street to six P120 carparks
- Convert two metres of kerb space to a no stopping section at the existing kerb ramp in front of 10 Cameron Street (opposite Fore St).
- Convert 39 unrestricted carparks from Nos.16 – 60 Cameron Street to 39 P24hr carparks.

# We are proposing a change in your area

	<ul style="list-style-type: none"> <li>• Install No Stopping Restriction (BYLs)             <ul style="list-style-type: none"> <li>○ around the corner of Cameron Street into Sargeson Way for a length of 15 metres and</li> <li>○ around the corner of Sargeson Way into Marsh Way for a length of 15 metres and</li> <li>○ around the corner of Marsh Way into Cameron Street for a length of 14 metres.</li> </ul> </li> <li>• Install No Stopping Restriction (BYLs) on both sides of the narrow section of Cameron St from No.60 Cameron Street to Brasch Way for a length of 35 metres.</li> <li>• Convert four angle P60 carparks at the bottom of Cameron Street on the western side to 2 parallel P60 carparks.</li> </ul>
<p><b>Why we are proposing the change</b></p>	<ul style="list-style-type: none"> <li>• This primary bike route is part of the Wellington Bike Network, which was approved by council in March 2022.</li> <li>• This route will support the strategic goals outlined in the Long-Term Plan, the Regional Land Transport Plan and Te Atakura by improving safety, improving travel options and enabling a reduction in transport-generated carbon emissions.</li> <li>• This proposal connects the Hutt Road Cycleway to the suburbs of Ngaio, Crofton Downs and Khandallah.</li> <li>• These changes will make it safer for more people to bike/scoot between these suburbs and Wellington City and walk locally.</li> <li>• It takes approximately 20 minutes to ride into the CBD from Ngaio, and 25-30 minutes from the CBD to Ngaio.</li> <li>• The route improvements include safer pedestrian facilities across Kaiwharawhara Road, Ngaio Gorge Road and Crofton Road.</li> <li>• A new solid median pedestrian refuge will be installed on Kaiwharawhara Road for pedestrians to cross near Cameron St.</li> <li>• There will be a new raised pedestrian zebra crossing installed at the top of Ngaio Gorge Road near the bus stops.</li> <li>• The existing pedestrian zebra crossing at the bus stop on Crofton Road will be raised.</li> <li>• The changes on Kaiwharawhara Road will be made over three stages – mid-2023, early-2024, and early-2025 – to give residents and businesses time to adjust to the relocation and removal of carparks on one side of the road.</li> <li>• Affected landowners will be notified two weeks before the work in 2023, 2024 and 2025 begins.</li> <li>• These changes have been developed through the business case process and have involved initial engagement with residents and businesses along the route.</li> </ul>

## Impact

- Net parking impact
  - removal of 51 carparking spaces on Kaiwharawhara Road (five P30 and 26 unrestricted), taking maximum occupancy from a current peak of 84% to a predicted new peak of 100%.
  - removal of one P30 parking space on Kenya Street
  - installation of one P10 parking space on Kenya Street
  - removal of 59 unrestricted parking spaces on Kenya Street, taking maximum occupancy from a current peak of 41% to a predicted new peak of 87%.
  - removal of 16 unrestricted parking spaces on Crofton Road (assessed low impact).
  - removal of two P60 car parks on Cameron Street
  - convert four unrestricted carparks to four P60 carparks on Cameron Street
  - convert seven unrestricted carparks to six P120 carparks on Cameron Street
  - convert 39 unrestricted carparks to 39 P24hr carparks on Cameron Street
  - Note: Cameron St is not expected to exceed 85% occupancy
  - removal of one unrestricted car park at the bottom of Old Porirua Road.
- The impact on people driving along this principal route will be improved traffic efficiency and safety.
- Pedestrian impact is positive: The impact on pedestrians will be improved safety and accessibility due to two new crossings and one existing crossing being upgraded.
- Business impact will vary depending on where they are:
  - On Crofton Road the impact will be low as parking will be retained directly outside the businesses and alternative parking is available nearby.
- Kaiwharawhara Road businesses in the uphill (Ngaio bound) direction will have the on-street parking adjacent to their premises removed between 2023 and 2025. The staged approach to delivery of this project is aimed at minimising the impact to businesses and giving them time to find alternative parking, including optimising private land in the area, make any operational changes that reduce the need for on-street parking and consider how staff and customers can access premises via other modes of transport.
- The impact on public transport will be improved access to bus stops and improved efficiency for buses, which currently have difficulty on narrow parts of Kenya Street when cars are parked on both sides of the street leaving less than 6 metres width for two lanes of traffic.
- Impact on parking revenue will be none.
- The impact on people cycling or wanting to cycle will be a safer and more attractive route.

# We are proposing a change in your area

<b>How this relates to the parking policy</b>	<ul style="list-style-type: none"><li>• Supports mode shift to using active modes (e.g., walking and cycling) and public transport through improved street design and parking management</li><li>• Supports safe movement – facilitates the safe and efficient movement of people and goods by focusing on people moving along transport corridors rather than people parking or storing stationary vehicles.</li><li>• A parking management plan was undertaken to inform the design of these changes and feedback from the community has subsequently been incorporated into the proposed parking changes.</li><li>• As outlined in the Parking Policy 2020, short term and residents parking has been prioritised over commuter parking which is the lowest priority for road space allocation.</li></ul>
<b>Additional Information</b>	<ul style="list-style-type: none"><li>• This Ngaio to City project is a key initiative to deliver on several strategic plans for the city, including the Long-Term Plan, Te Atakura (Climate Action Plan) and Paneke Pōneke (Wellington Bike Network Plan)</li><li>• The improvements are being made using lower cost, adaptable materials that can be tweaked based on public feedback, and data, once these initial installations are in place.</li><li>• Designs were developed by technical experts and with input from the community. A technical working group helped to ensure project objectives were met without compromising road safety, within a constrained road corridor.</li><li>• Average daily traffic count – 12,400 AADT on Kaiwharawhara Road, 9,800 AADT on Ngaio Gorge Road, 8,000 AADT on Kenya Street, 690 AADT on Cameron Street.</li><li>• It is proposed that these changes will be complemented by an extension of the existing 30kph zone on Ottawa Road in Ngaio Village, to Ngaio Roundabout and up Crofton Road. The existing 30kph zone is 305 metres long, and the proposed extension is 320 metres long. This speed change is being consulted on as part of this Traffic Resolution process, but will follow the alternative method for setting speed limits outlined in the Setting the Speed Limit Rule 2022. Submissions received on the speed limit change will be considered before a final decision by the Director of Land Transport, Waka Kotahi is made on the proposed speed limit change.</li><li>• It is also proposed to reduce the speed limit from 50kph to 30kph on the whole of Cameron Street (525 metres long). This speed change is being consulted on as part of this Traffic Resolution process, but will follow the alternative method for setting speed limits outlined in the Setting the Speed Limit Rule 2022. Submissions received on the speed limit change will be considered before a final decision by the Director of Land Transport, Waka Kotahi is made on the proposed speed limit change.</li><li>• Annual parking revenue impact - none</li><li>• To view the legal description for this Traffic Resolution, an electronic copy of the report will be available on the Council’s website from 9.00am Monday 31 October 2022 at <a href="https://www.letstalk.wellington.govt.nz/">https://www.letstalk.wellington.govt.nz/</a> or you can call (04) 499 4444 and we will send one out to you.</li></ul>

## We are proposing a change in your area

Absolutely Positively  
Wellington City Council

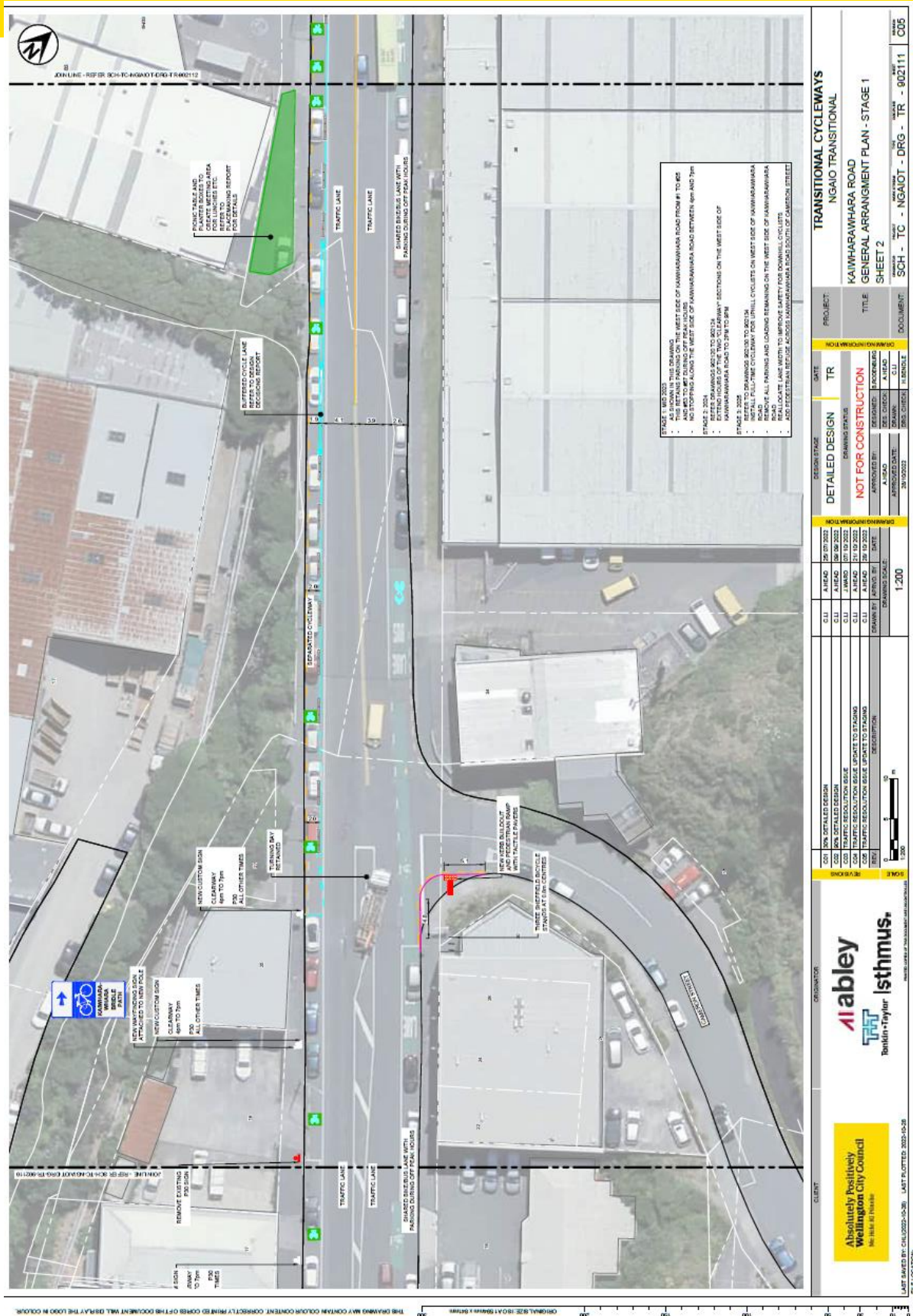
Me Heke Ki Pōneke

	<ul style="list-style-type: none"><li>The improvements proposed in this Traffic Resolution are the result of an options analysis. The options analysis report, along with other supporting material such as a parking management plan, safety audits, etc, can be found here: <a href="https://www.transportprojects.org.nz/current/ngaio-connection/">https://www.transportprojects.org.nz/current/ngaio-connection/</a></li></ul>
<b>Feedback</b>	<ul style="list-style-type: none"><li>If you would like to provide us with specific feedback, which will be added to the Traffic Resolution following consultation and made public in full, you can do so by filling out an online submission form, downloading a printable submission form on <a href="https://www.letstalk.wellington.govt.nz/">https://www.letstalk.wellington.govt.nz/</a> or emailing us at <a href="mailto:ngaioconnections@wcc.govt.nz">ngaioconnections@wcc.govt.nz</a> <b>Please note if you are giving feedback the consultation period opens at 9.00 am Monday 31 October 2022 and finishes at 5.00 pm Monday 21 November 2022.</b></li><li>What we do with your personal information: All submissions (<b>including your name</b>, but not contact details) are provided <b>in their entirety</b> to elected members and made available to the public on our website and at our office.</li></ul>
	<ul style="list-style-type: none"><li>Personal information (including contact details) will also be used for the administration of the consultation process including informing you of the outcome of the consultation. All information collected will be held by Wellington City Council, 113 The Terrace, Wellington, with submitters having the right to access and correct personal information.</li></ul>
<b>Next Steps</b>	<ol style="list-style-type: none"><li>Feedback will be collated, and the proposal will be presented to a Council committee in December 2022.</li><li>The committee meeting date and time will be confirmed after 17 November. Council Officers will update submitters on the committee meeting details.</li><li>If approved, the proposal will be installed within the following three years.</li></ol>

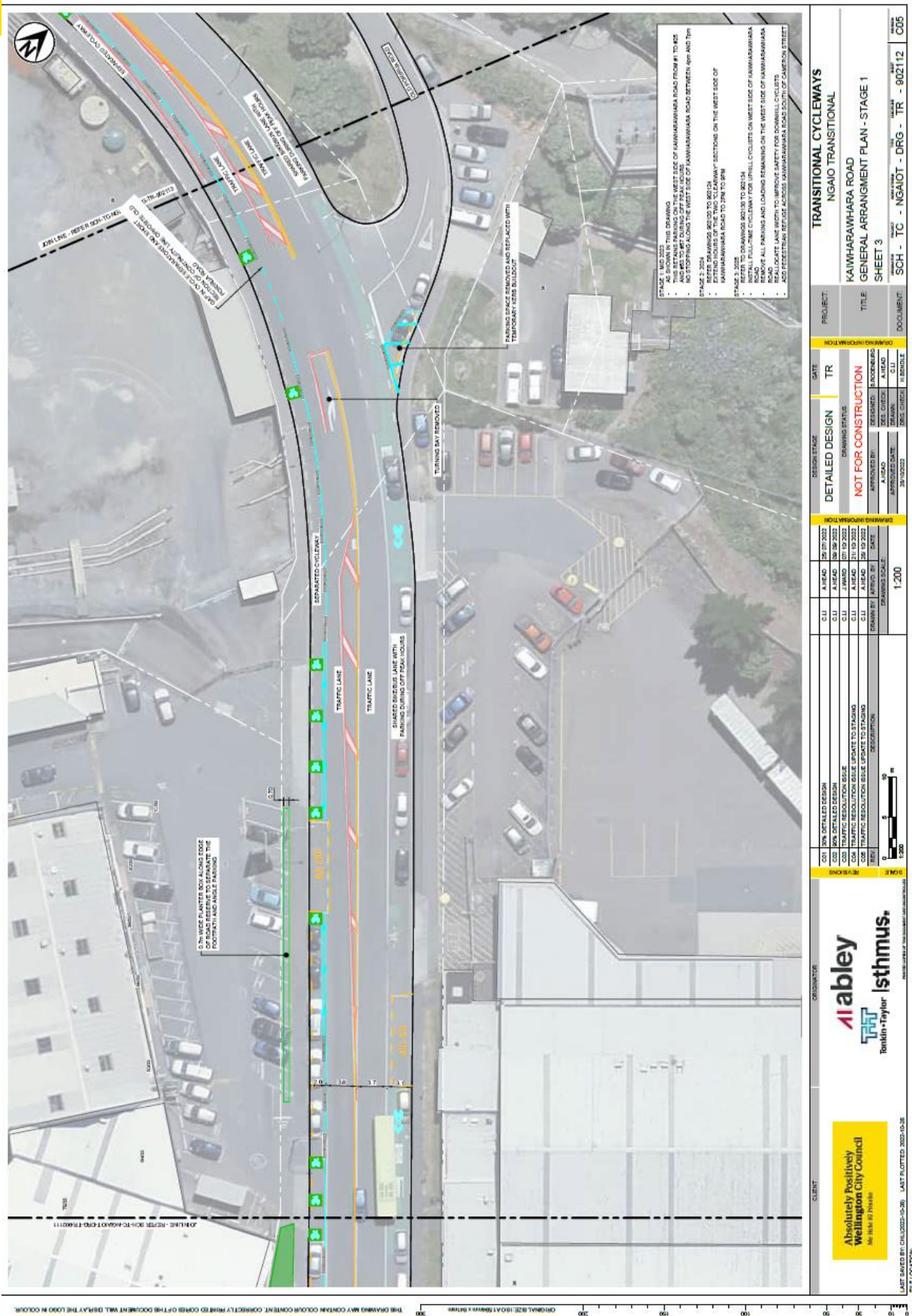


We are proposing a change in your area

Absolutely Positively  
Wellington City Council  
Me Heke Ki Pōneke





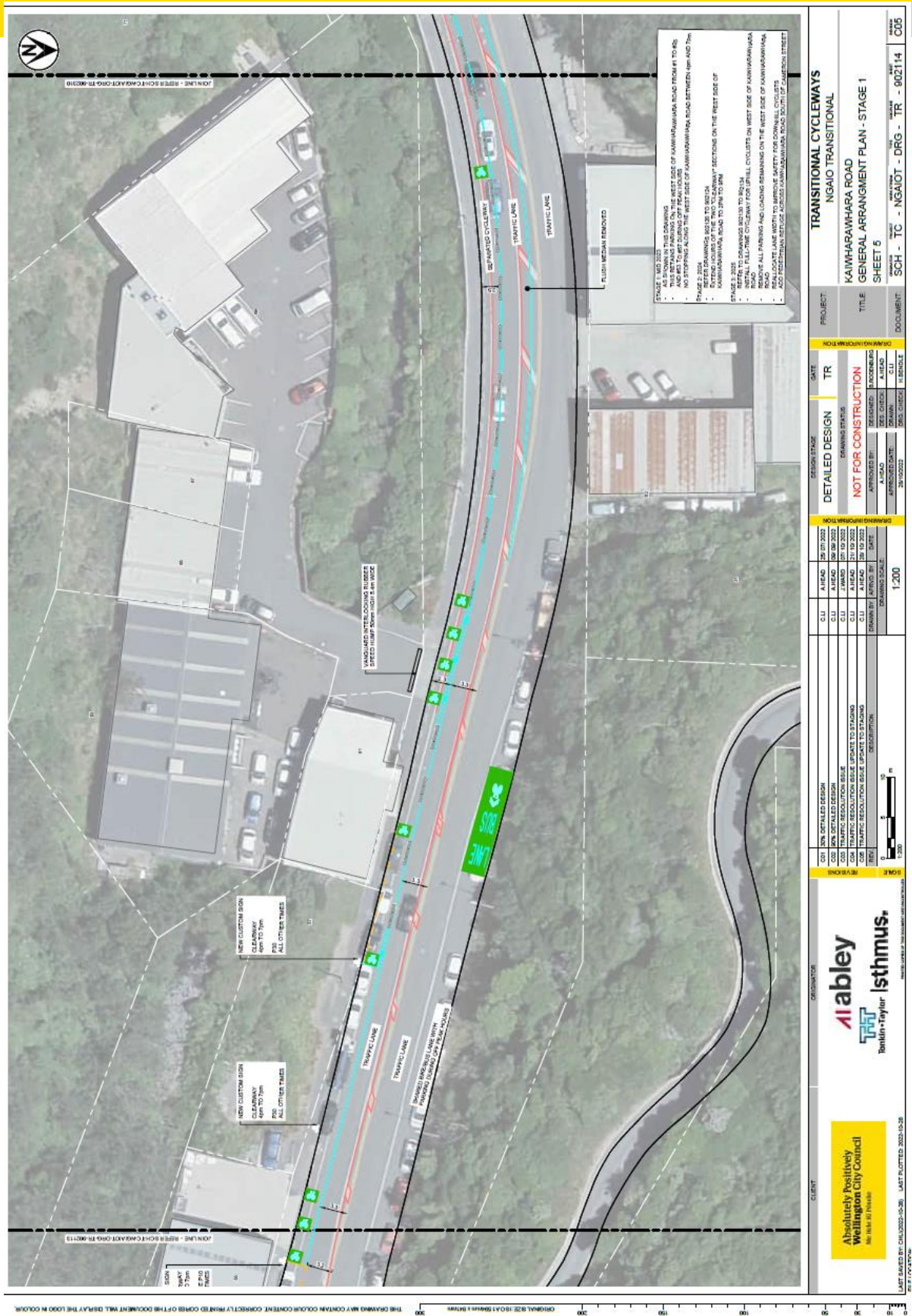


THIS DRAWING MAY CONTAIN COLOUR CONTENT. CORRECTLY PRINTED COLOUR CONTENT WILL DISPLAY THE COLOUR IN COLOUR. ORIGINAL SIZE: 180x110mm (A4) RETINA. SCALE: 1:200. DATE: 18/03/2022. LATEST REVISION: 05/08/2024. LATEST PLOTTED: 2024-05-08. CLIENT: Wellington City Council. PROJECT: KAIIHARAMAHARA ROAD GENERAL ARRANGEMENT PLAN - STAGE 1. SHEET 3 OF 3. DOCUMENT: SCH - TC - NGAOT - DRG - TR - 902112. CDS



We are proposing a change in your area

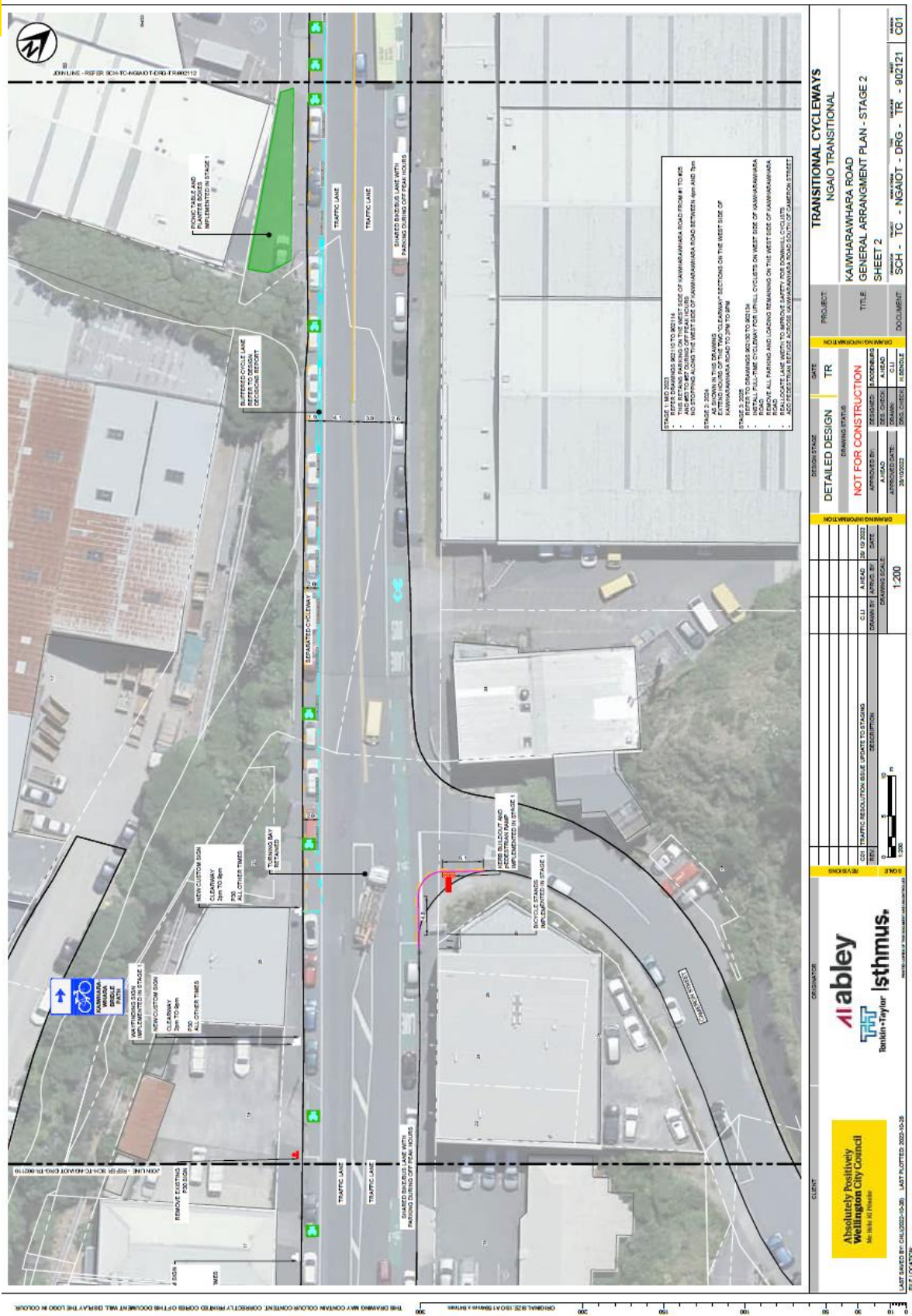
Absolutely Positively  
Wellington City Council  
Me Heke Ki Pōneke





We are proposing a change in your area

Absolutely Positively  
Wellington City Council  
Me Heke Ki Pōneke



STAGE 1 - 2023  
 REFERS DRAWINGS 90210 TO 90214  
 - NEW BUILT-OUT AND BIKE BUILT-OUT ON WEST SIDE OF KAIHARAWHARA ROAD BETWEEN 8th AND 7th  
 - NEW BUILT-OUT AND BIKE BUILT-OUT ON EAST SIDE OF KAIHARAWHARA ROAD BETWEEN 8th AND 7th  
 - NO STOPPING ALONG THE WEST SIDE OF KAIHARAWHARA ROAD BETWEEN 8th AND 7th

STAGE 2 - 2024  
 IN THIS DRAWING  
 - EXISTING LANE OF THE TWO 'CYCLEWAY' SECTIONS ON THE WEST SIDE OF KAIHARAWHARA ROAD TO 20th TO 21st  
 - NEW 'CYCLEWAY' SECTIONS ON THE WEST SIDE OF KAIHARAWHARA ROAD TO 20th TO 21st  
 - FULL-TIME CYCLEWAY FOR URBELL CYCLES ON WEST SIDE OF KAIHARAWHARA ROAD  
 - REMOVE ALL PARKING AND LOADING REMAINING ON THE WEST SIDE OF KAIHARAWHARA ROAD  
 - REALLOCATE LANE WIDTH TO IMPROVE SAFETY FOR DOWNHILL CYCLISTS  
 - ADJUST EXISTING LIGHT POLES TO ACCOMMODATE DOWNHILL CYCLISTS OF GARDEN STREET

**Absolutely Positively Wellington City Council**  
 Me Heke Ki Pōneke

CURT: **TRANSITIONAL CYCLEWAYS**  
 NGAILO TRANSITIONAL  
 KAIHARAWHARA ROAD  
 GENERAL ARRANGEMENT PLAN - STAGE 2  
 SHEET 2  
 SCH - TC - NGAILO - DRG - TR - 902121

DATE: TR  
 PROJECT: NGAILO TRANSITIONAL  
 DESIGNER: AHEAD  
 DRAWING STATUS: **NOT FOR CONSTRUCTION**  
 DESIGNED: AHEAD  
 APPROVED BY: AHEAD  
 APPROVED DATE: 28/10/2023

CLIENT: AHEAD  
 DRAWN BY: AHEAD  
 DRAWING SCALE: 1:200  
 DATE: 28/10/2023

LAST DRAINED BY: CAL/2023-03-26  
 LAST PLOTTED: 2023-10-28  
 03/10/2023

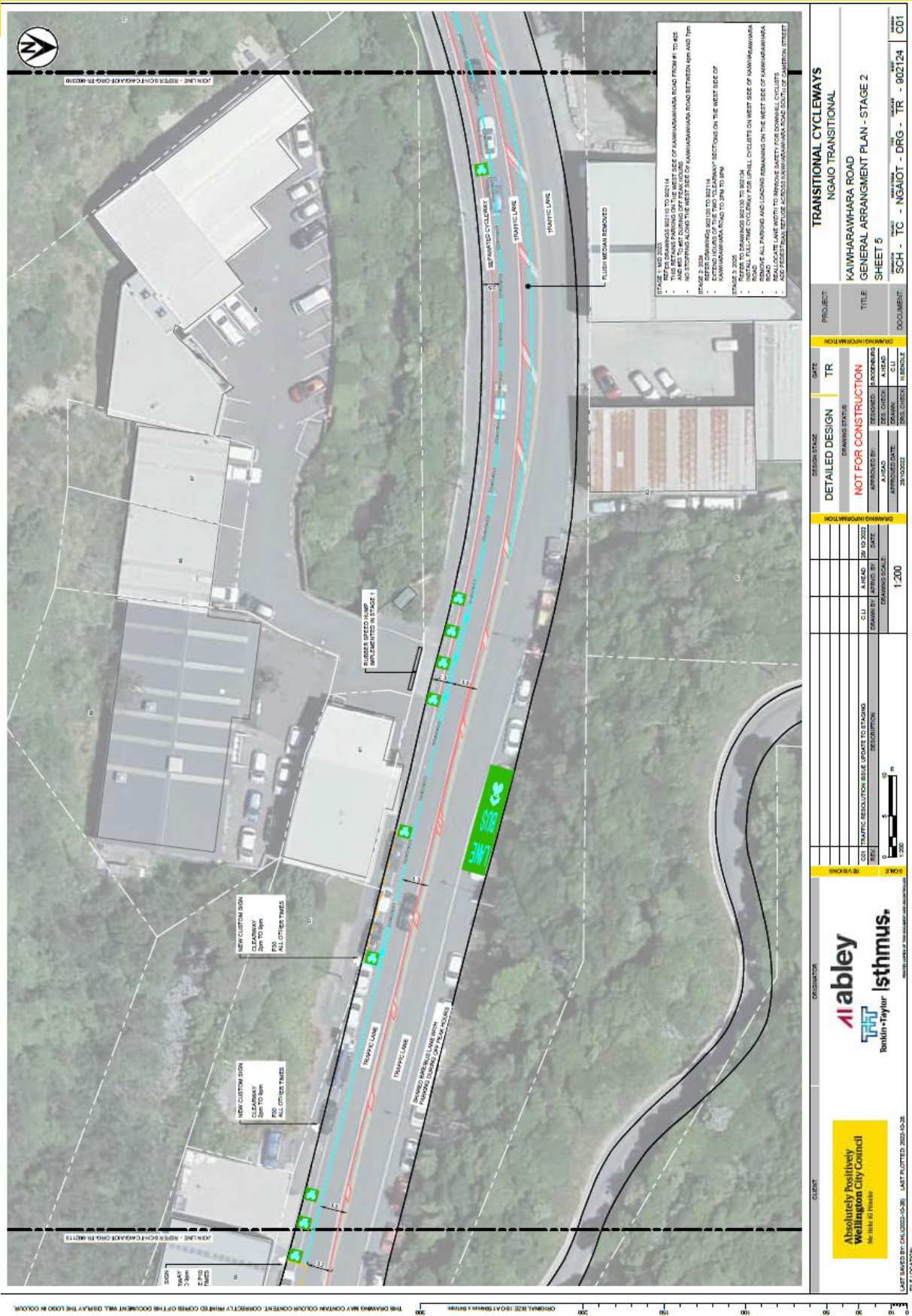
THIS DRAWING MAY CONTAIN COLOR CONTENT. CORRECTLY PRINTED COPIES OF THIS DOCUMENT WILL DISPLAY THE COLOR IN COLOR. ORIGINAL SIZE: 130x178mm x BTRIME





We are proposing a change in your area

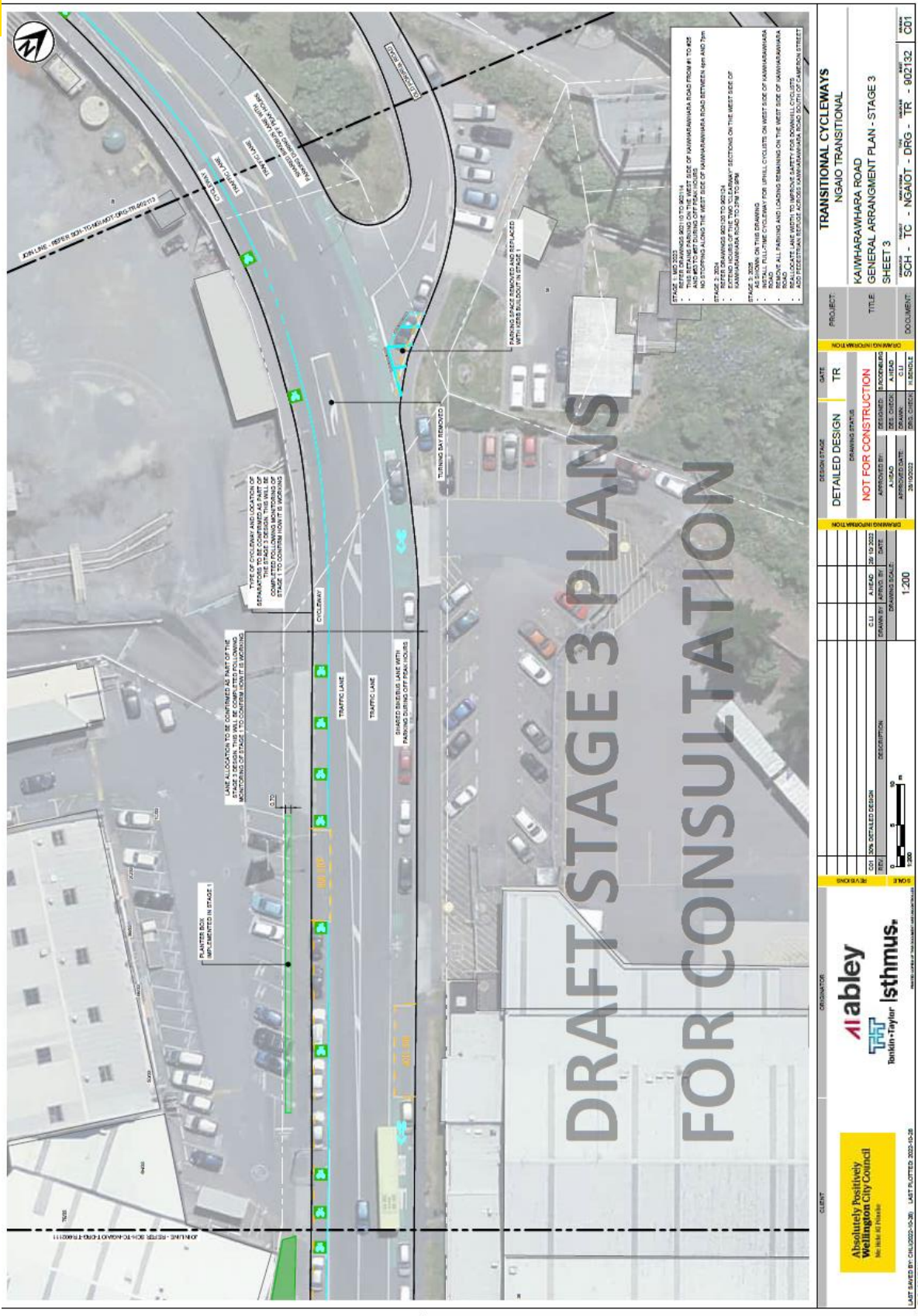
Absolutely Positively  
Wellington City Council  
Me Heke Ki Pōneke











STAGE 1, MD 2023

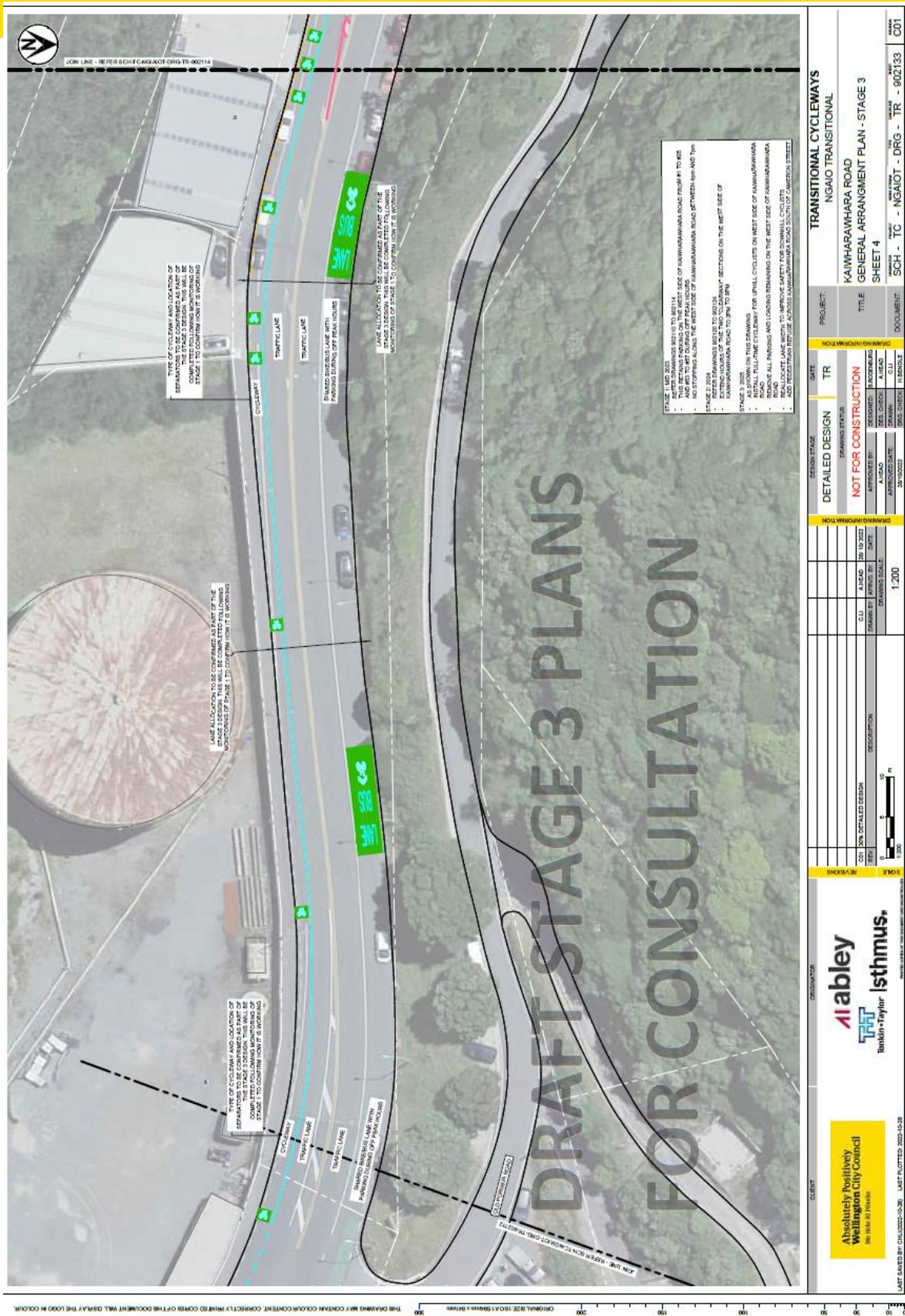
- REFER DRAWINGS 80210 TO 80214 - WEST SIDE OF KAIHARA ROAD FROM #1 TO #5 AND WEST TO WEST DUNEDIN OFFSHOOTERS
- NO CHANGES ALLOWED TO THE WEST SIDE OF KAIHARA ROAD BETWEEN #4 AND 7m
- REFER DRAWINGS 80215 TO 80218 - EAST SIDE OF KAIHARA ROAD FROM #1 TO #5
- NO CHANGES ALLOWED TO THE EAST SIDE OF KAIHARA ROAD BETWEEN #1 AND 7m
- REFER DRAWINGS 80219 TO 80224
- NO CHANGES ALLOWED TO THE EAST SIDE OF KAIHARA ROAD BETWEEN #1 AND 7m
- NO CHANGES ALLOWED TO THE EAST SIDE OF KAIHARA ROAD BETWEEN #1 AND 7m

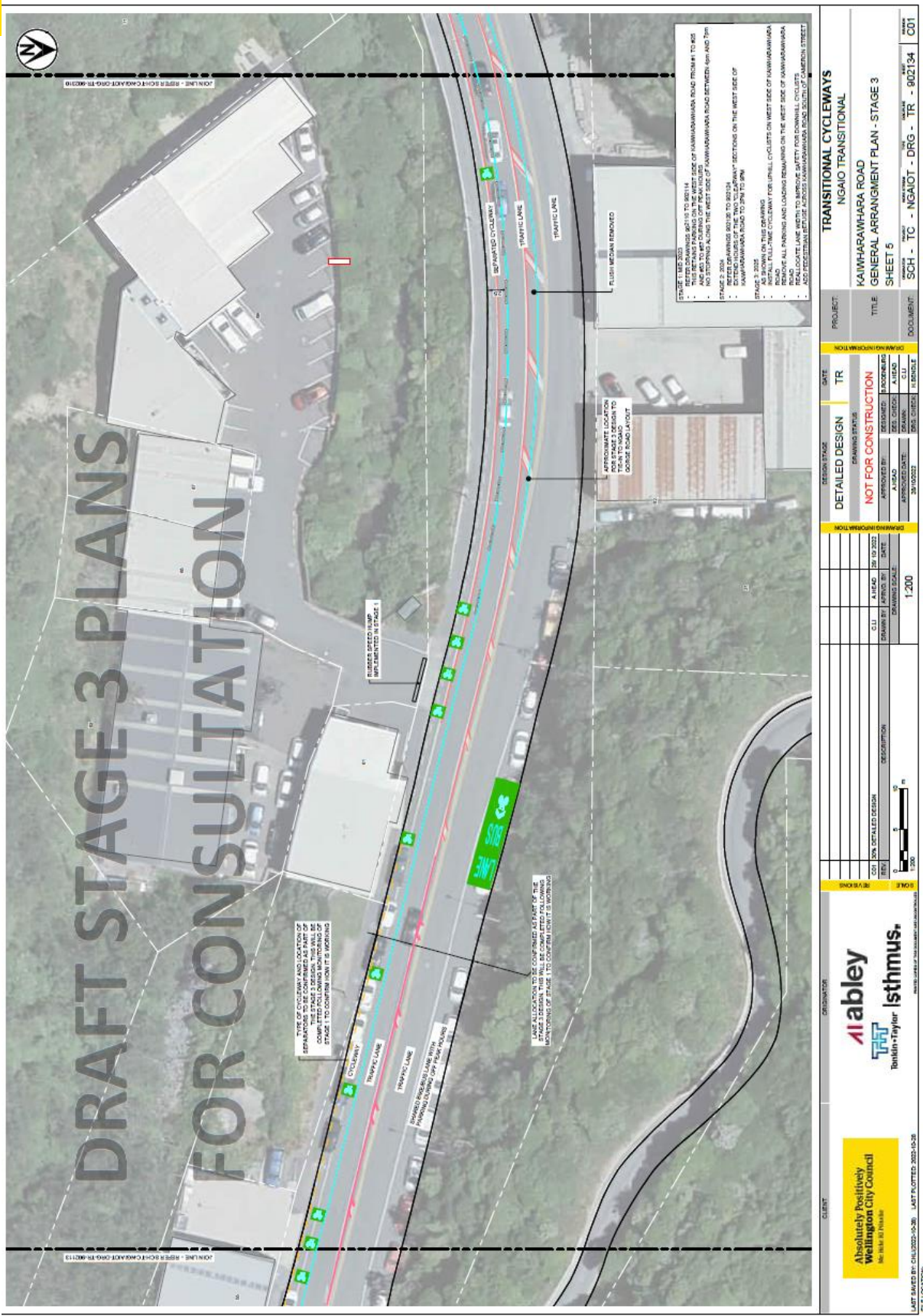
STAGE 2, 2024

- AS SHOWN ON THIS DRAWING
- ALL FULL-TIME CYCLEWAYS FOR SPILL CYCLES ON WEST SIDE OF KAIHARA ROAD
- ROADSIDE PARKING AND LOADING REMAINING ON THE WEST SIDE OF KAIHARA ROAD
- NO CHANGES ALLOWED TO THE WEST SIDE OF KAIHARA ROAD BETWEEN #1 AND 7m
- NO CHANGES ALLOWED TO THE WEST SIDE OF KAIHARA ROAD BETWEEN #1 AND 7m

CLIENT		ORIGINATOR		DATE		GATE	
Absolutely Positively Wellington City Council		abley		TR		TR	
LAST SAVED BY: CAL0202-03-20		LAST PLOTTED: 2023-03-28		DRAWING STATUS		DRAWING STATUS	
LAST PLOTTED: 2023-03-28		LAST PLOTTED: 2023-03-28		NOT FOR CONSTRUCTION		NOT FOR CONSTRUCTION	
PROJECT		PROJECT		APPROVED BY:		APPROVED BY:	
NGAIO TRANSITIONAL		NGAIO TRANSITIONAL		A-ROAD		A-ROAD	
KAIHARA ROAD		KAIHARA ROAD		DATE		DATE	
GENERAL ARRANGEMENT PLAN - STAGE 3		GENERAL ARRANGEMENT PLAN - STAGE 3		28/03/23		28/03/23	
SHEET 3		SHEET 3		DATE		DATE	
SCH - TC - NGAIO1 - DRG - TR - 902132		SCH - TC - NGAIO1 - DRG - TR - 902132		28/03/23		28/03/23	
DOCUMENT		DOCUMENT		SCALE		SCALE	
C01		C01		1:200		1:200	

THIS DRAWING MAY CONTAIN COLOUR CONTENT. CORRECTLY PRINTED COPIES OF THIS DOCUMENT WILL DISPLAY THE COLOUR IN COLOUR. ORIGINAL SIZE: 100% (BROWSER) 80% (PRINT)





THIS DRAWING MAY CONTAIN COLOR CONTENT. CORRECTLY PRINTED COPIES OF THIS DOCUMENT WILL DISPLAY THE COLOR IN COLOR.  
 ORIGINAL SIZE: 180x119mm (A1) 8.81mm x 4.81mm  
 LAST DRAWING BY: CH12022-03-26 LAST PLOTTED: 2023-10-26  
 FILE COUNTRY: NZ

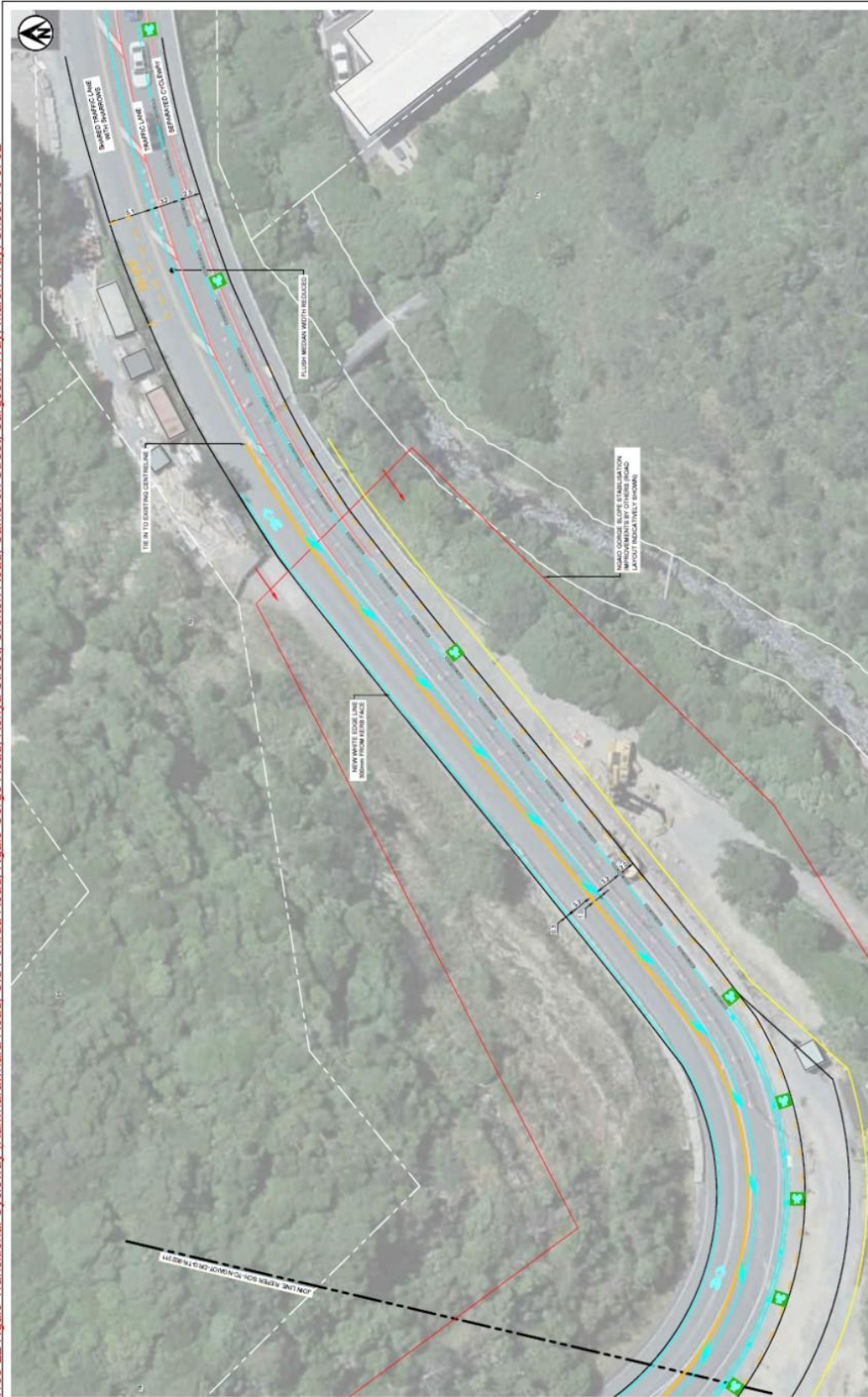
# We are proposing a change in your area

Absolutely Positively  
Wellington City Council

Me Heke Ki Pōneke

All plans below are Stage 1 (2023 onwards)

TR180-22 Ngaito Transitional Cycleway (Kaiharahara Road, Old Porirua Road, Ngaito Gorge Road, Kenya Street, Crofton Road, Cameron Street, Sargeson Way, Marsh Way) Sheet 16 of 32

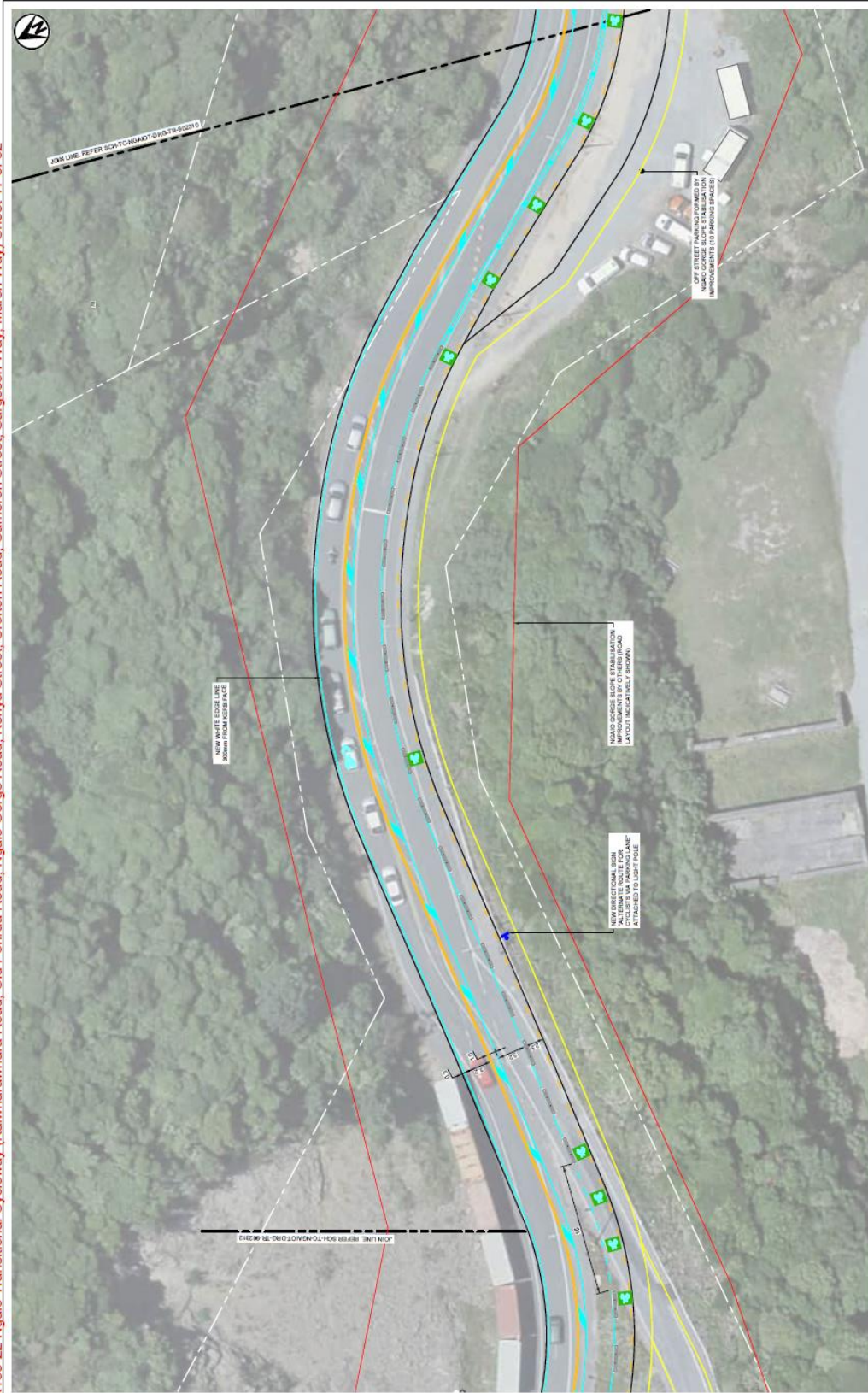


		<b>TRANSITIONAL CYCLEWAYS</b> NGAITO TRANSITIONAL	
CLIENT: Absolutely Positively Wellington City Council (in consultation with)		PROJECT: NGAITO GORGE ROAD GENERAL ARRANGEMENT PLAN	
LAST SAVED BY: CH12022-04-06 LAST PLOTTED: 2022-10-07		TITLE: SHEET 16 DOCUMENT: SCH - TC - NGAITOT - DRG - TR - 902310 CODE: C03	
DESIGN STAGE: DETAILED DESIGN NOT FOR CONSTRUCTION		DATE: 26 OCT 2022 APPROVED BY: [Signature] APPROVED DATE: 07 FEB 2022	
CHECKED BY: [Signature] CHECKED DATE: 17 FEB 2022		DRAWING SCALE: 1:200	
DESIGNER: [Signature] DESIGN DATE: 17 FEB 2022		CHECKED BY: [Signature] CHECKED DATE: 17 FEB 2022	
DRAWING NO: [Number] DRAWING DATE: 17 FEB 2022		DRAWING SCALE: 1:200	

# We are proposing a change in your area

Absolutely Positively  
Wellington City Council  
Me Heke Ki Pōneke

TR180-22 Ngaio Transitional Cycleway (Kaiwharawhara Road, Old Porirua Road, Ngaio Gorge Road, Kenya Street, Crofton Road, Cameron Street, Sargeson Way, Marsh Way) Sheet 17 of 32



		<b>CLIENT</b> Absolutely Positively Wellington City Council Me Heke Ki Pōneke LANT PLOTTED: 2022-04-07	<b>REVISIONS</b> SCALE: 1:200 0 5 10 m
<b>ORIGINATOR</b> Abley Isthmus www.abley.com   www.isthmus.com   info@abley.com   info@isthmus.com	<b>DESIGNER</b> AHEAD DATE: 25/10/2022 DRAWN BY: JAWARD DATE: 10/10/2022	<b>PROJECT</b> TRANSITIONAL CYCLEWAYS NGAIO TRANSITIONAL NGAIO GORGE ROAD GENERAL ARRANGEMENT PLAN SHEET 2 DOCUMENT: SCH - TC - NGAIO107 - DRG - TR - 902311	<b>DATE</b> TR DRAWING STATUS NOT FOR CONSTRUCTION APPROVED BY: JAWARD DATE: 27/10/2022 APPROVED BY: JAWARD DATE: 27/10/2022









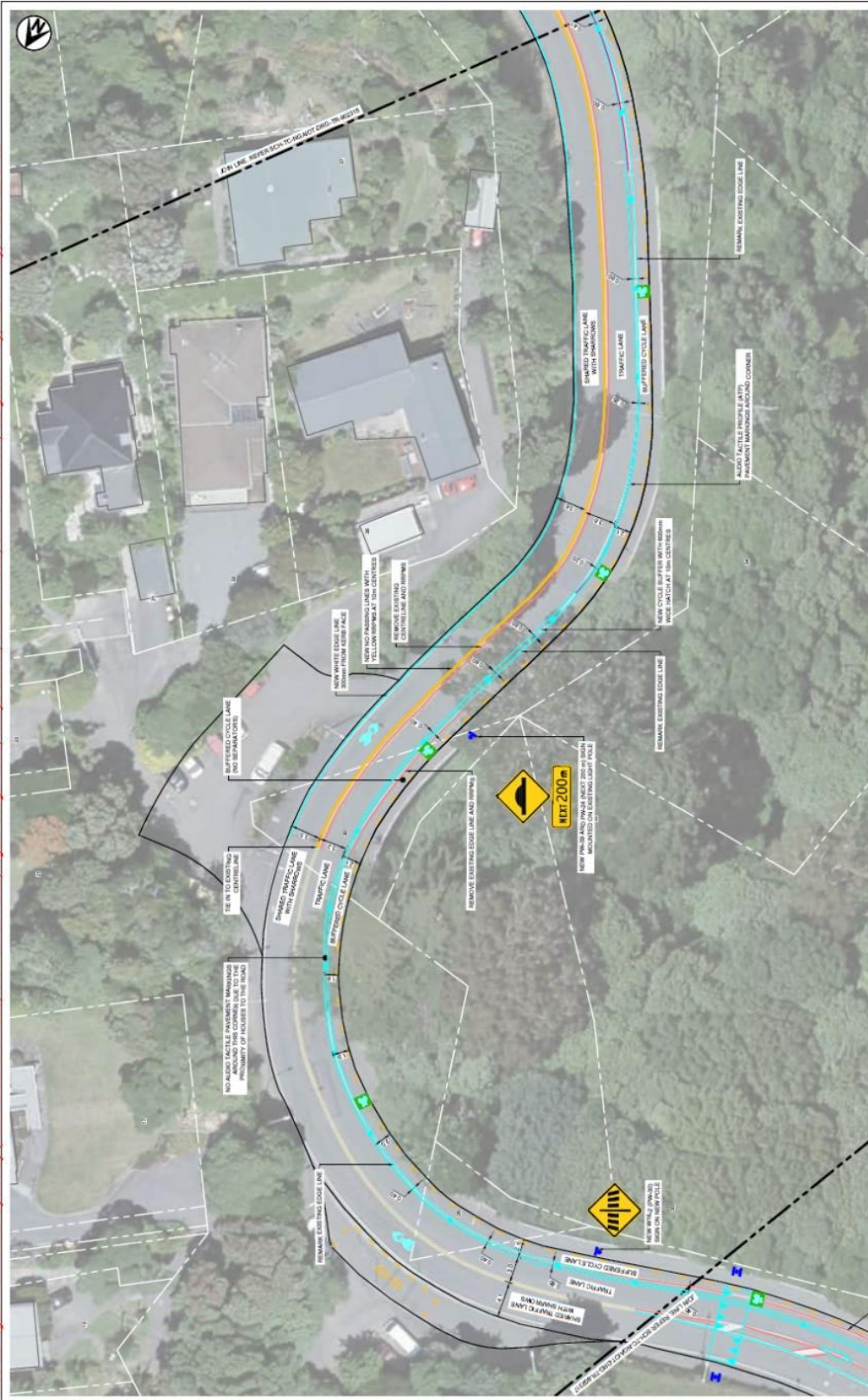


# We are proposing a change in your area

Absolutely Positively  
Wellington City Council

Me Heke Ki Pōneke

TR180-22 Ngāio Transitional Cycleway (Kaiwharwhara Road, Old Porirua Road, Ngāio Gorge Road, Kenya Street, Crofton Road, Cameron Street, Sargeson Way, Marsh Way) Sheet 22 of 32

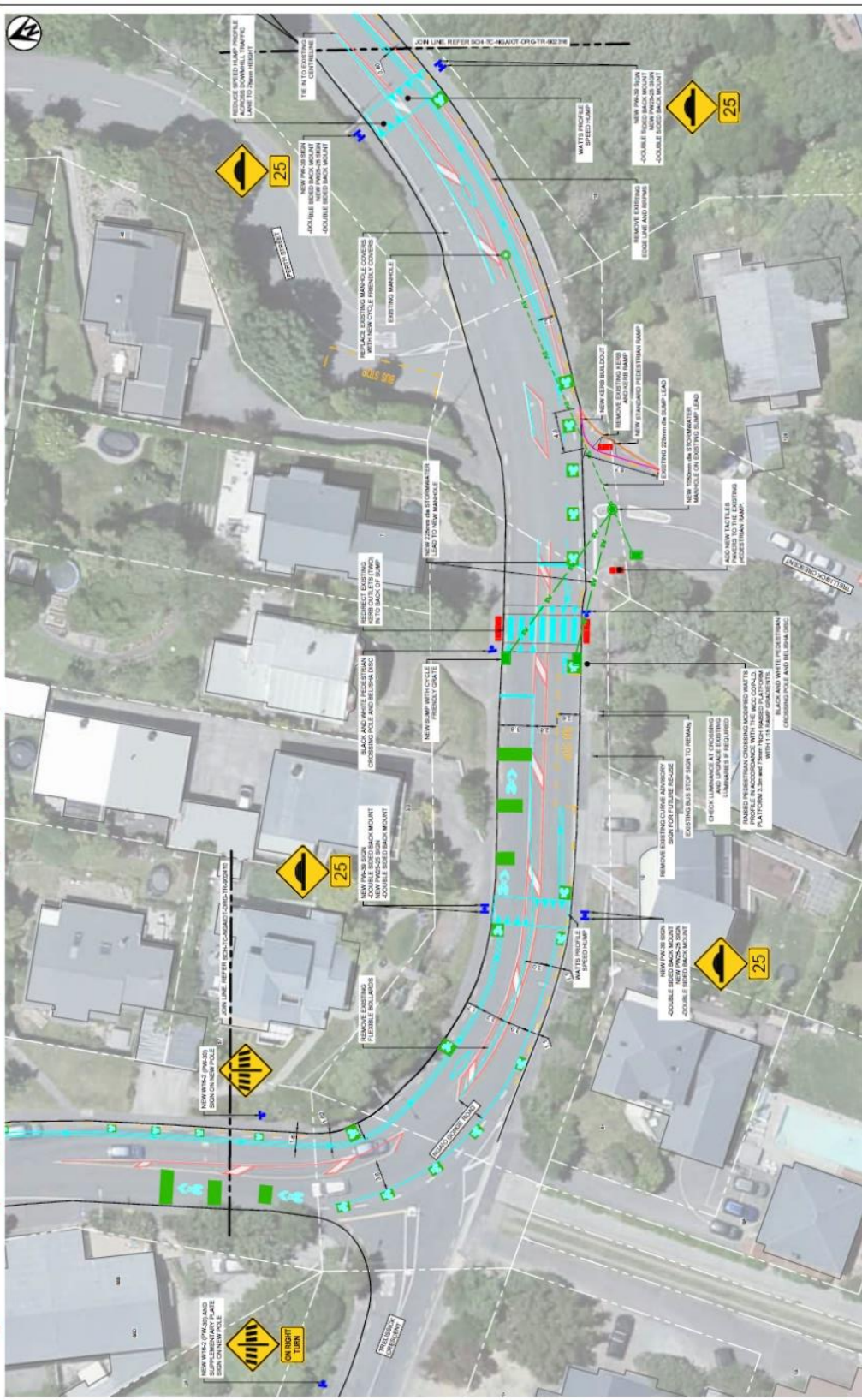


<b>Absolutely Positively</b> Wellington City Council Me Heke Ki Pōneke		CLIENT:		PROJECT:	
LAST DRAFTED BY: CHL0202-14-071    LAST PLOTTED: 2022-10-17 SHEET NUMBER: 22 OF 32		DRAWN: J. JAMES CHECKED: J. JAMES DATE: 07/10/2022		PROJECT: TRANSITIONAL CYCLEWAYS NGĀIO TRANSITIONAL NGĀIO GORGE ROAD GENERAL ARRANGEMENT PLAN SHEET 7	
SCALE: 1:200		DATE: TR		DOCUMENT: SCH - TC - NGAIO1 - DRG - TR - 902316    CD3	
DESIGN STATUS: NOT FOR CONSTRUCTION		APPROVED DATE: 07/10/2022		TITLE:	
DESIGNER:		APPROVED BY:		PROJECT:	
CHECKED:		APPROVED DATE:		PROJECT:	
DATE:		APPROVED BY:		PROJECT:	
DATE:		APPROVED BY:		PROJECT:	

We are proposing a change in your area

Absolutely Positively  
Wellington City Council  
Me Heke Ki Pōneke

TR180-22 Ngāto Transitional Cycleway (Kaiwharwhara Road, Old Porrua Road, Ngāio Gorge Road, Kenya Street, Craftern Road, Cameron Street, Sargeson Way, Marsh Way) Sheet 23 of 32



<b>TRANSITIONAL CYCLEWAYS</b> NGAIO TRANSITIONAL	
PROJECT:	NGAIO GORGE ROAD GENERAL ARRANGEMENT PLAN SHEET 8
DATE:	TR
DESIGNER:	TR
DESIGN STATUS:	CHANGING STATUS <b>NOT FOR CONSTRUCTION</b>
APPROVED DATE:	07/10/2022
APPROVED BY:	CLJ
DESIGNED DATE:	07/10/2022
DESIGNED BY:	CLJ
CHECKED DATE:	07/10/2022
CHECKED BY:	CLJ
SCALE:	1:200
PROJECT NO:	25072022
DATE:	08/06/2022
SCALE:	1:200
PROJECT NO:	25072022
DATE:	08/06/2022
SCALE:	1:200

CLIENT: Wellington City Council  
 OPERATOR: Abley  
 CONSULTANT: TPT  
 CONSULTANT: Tonkin + Taylor  
 Isthmus.

LAST SAVED BY: CH2202-18471  
 LAST PLOTTED: 2022-04-07  
 SHEET: 23 OF 32

# We are proposing a change in your area

Absolutely Positively  
Wellington City Council  
Me Heke Ki Pōneke

TR180-22 Ngato Transitional Cycleway, (Kaiwharawhara Road, Old Porirua Road, Ngaio Gorge Road, Kenya Street, Crofton Road, Cameron Street, Sargesson Way, Marsh Way) Sheet 25 of 32

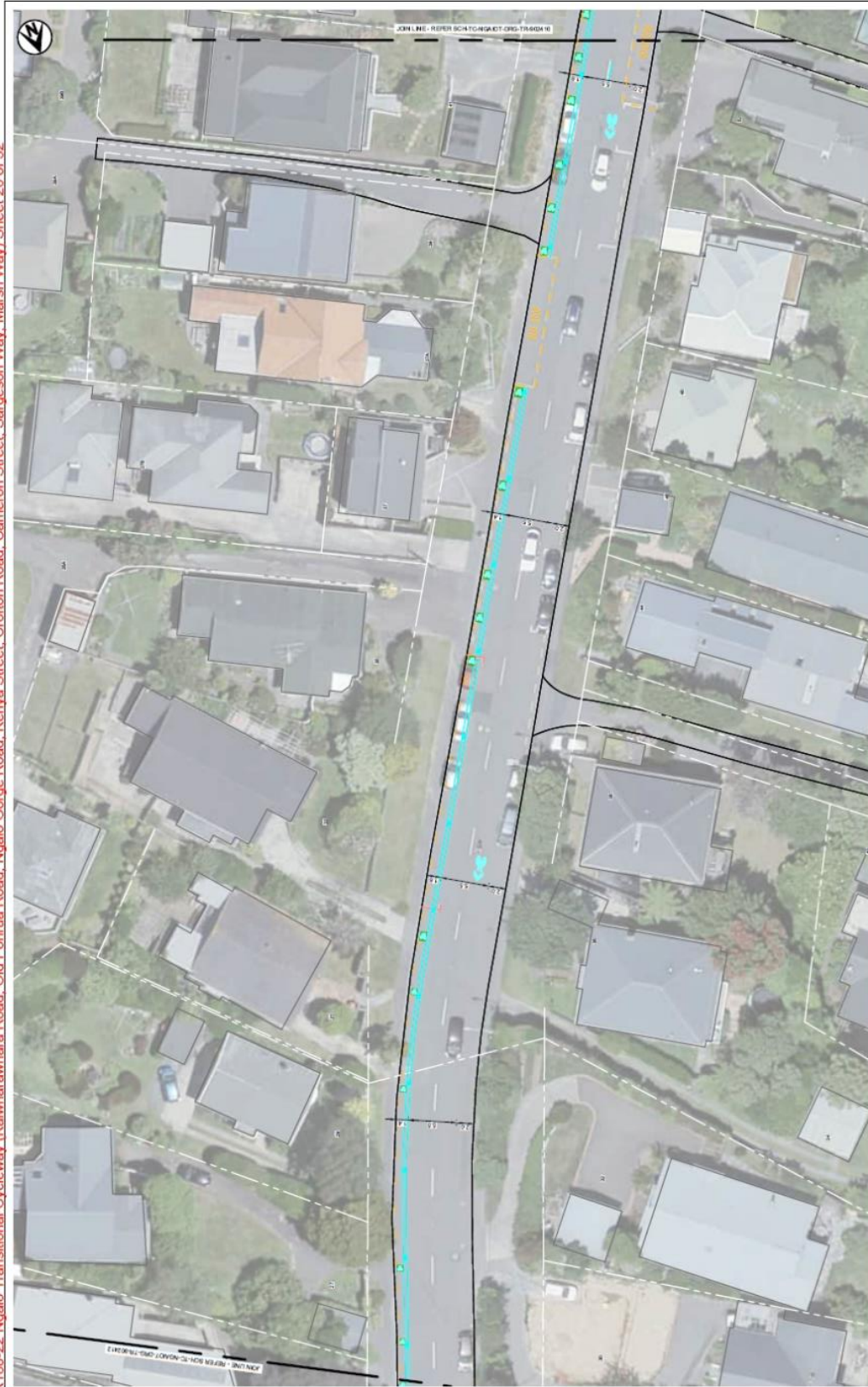


<b>CLIENT</b>		<b>ORIGINATOR</b>		<b>DATE</b>		<b>PROJECT</b>	
Absolutely Positively Wellington City Council Me Heke Ki Pōneke		Abley Isthmus		TR		TRANSITIONAL CYCLEWAYS NGAIO TRANSITIONAL	
LAST ISSUED BY: CHL/2022-04-08		LAST PLOTTED: 2022-04-07		DRAWING STATUS		TITLE	
CHL/2022-04-08		2022-04-07		NOT FOR CONSTRUCTION		KENYA STREET GENERAL ARRANGEMENT	
CHL/2022-04-08		2022-04-07		DESIGNER		SHEET 1	
CHL/2022-04-08		2022-04-07		CHECKED		DOCUMENT	
CHL/2022-04-08		2022-04-07		APPROVED		SCH - TC - NGAIO - DRG - TR - 902410   C03	
CHL/2022-04-08		2022-04-07		SCALE		1:200	
CHL/2022-04-08		2022-04-07		DRAWING SCALE		1:200	

# We are proposing a change in your area

Absolutely Positively  
Wellington City Council  
Me Heke Ki Pōneke

TR180-22 Ngaito Transitional Cycleway (Kaiharahara Road, Old Pomua Road, Ngaito Gorge Road, Kenya Street, Crofton Road, Cameron Street, Sargeson Way, Marsh Way) Sheet 26 of 32

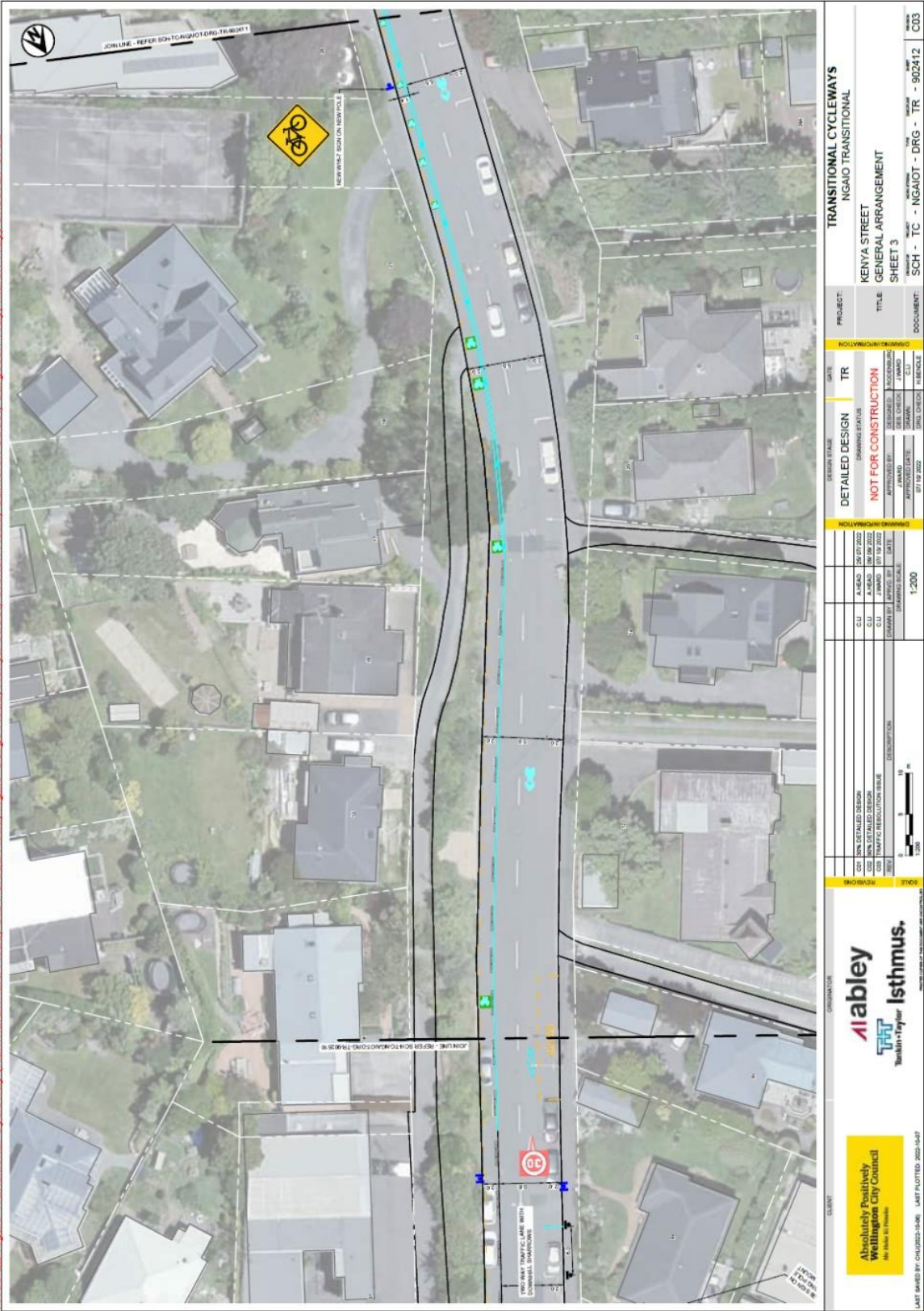


<b>CLIENT</b>		<b>ORIGINATOR</b>		<b>DATE</b>		<b>PROJECT</b>	
Absolutely Positively Wellington City Council We take it Personally		ableby LIFT Tomlin-Taylor Isthmus		TR		TRANSITIONAL CYCLEWAYS NGAITO TRANSITIONAL	
<b>SCALE</b>		<b>SCALE</b>		<b>DESIGN STAGE</b>		<b>TITLE</b>	
1:200		1:200		DETAILED DESIGN		KENYA STREET GENERAL ARRANGEMENT	
<b>REVISIONS</b>		<b>REVISIONS</b>		<b>DRAWING STATUS</b>		<b>SHEET</b>	
NO REVISIONS		NO REVISIONS		NOT FOR CONSTRUCTION		SHEET 2	
<b>REVISIONS</b>		<b>REVISIONS</b>		<b>APPROVED BY</b>		<b>DOCUMENT</b>	
NO REVISIONS		NO REVISIONS		DATE		SCH - TC - NCAIOT - DRG - TR - 902411	
<b>REVISIONS</b>		<b>REVISIONS</b>		<b>AWARD</b>		<b>DOCUMENT</b>	
NO REVISIONS		NO REVISIONS		DATE		C03	
<b>REVISIONS</b>		<b>REVISIONS</b>		<b>APPROVED DATE</b>		<b>DOCUMENT</b>	
NO REVISIONS		NO REVISIONS		07/10/2022		C03	
<b>REVISIONS</b>		<b>REVISIONS</b>		<b>DATE</b>		<b>DOCUMENT</b>	
NO REVISIONS		NO REVISIONS		07/10/2022		C03	

# We are proposing a change in your area

Absolutely Positively  
Wellington City Council  
Me Heke Ki Pōneke

TR180-22 Ngāio Transitional Cycleway (Kaiwharwhara Road, Old Porirua Road, Ngāio Gorge Road, Kenya Street, Crofton Road, Cameron Street, Sargeson Way, Marsh Way) Sheet 27 of 32



<b>CLIENT</b> Absolutely Positively Wellington City Council No. 1000 10000000		<b>DATE</b> TR		<b>DESIGNER</b> TR		<b>PROJECT</b> TRANSITIONAL CYCLEWAYS NGAIO TRANSITIONAL	
<b>CONTRACTOR</b> Abley 1000 10000000 Think it's fair Isthmus.		<b>DATE</b> 15/07/2022		<b>DESIGNER</b> TR		<b>PROJECT</b> KENYA STREET GENERAL ARRANGEMENT SHEET 3	
<b>SCALE</b> 1:200		<b>DATE</b> 15/07/2022		<b>DESIGNER</b> TR		<b>PROJECT</b> SCH - TC - NGAIO1 - DRG - TR - 902412 C03	
<b>DATE</b> 15/07/2022		<b>DATE</b> 15/07/2022		<b>DESIGNER</b> TR		<b>PROJECT</b> SCH - TC - NGAIO1 - DRG - TR - 902412 C03	
<b>DATE</b> 15/07/2022		<b>DATE</b> 15/07/2022		<b>DESIGNER</b> TR		<b>PROJECT</b> SCH - TC - NGAIO1 - DRG - TR - 902412 C03	



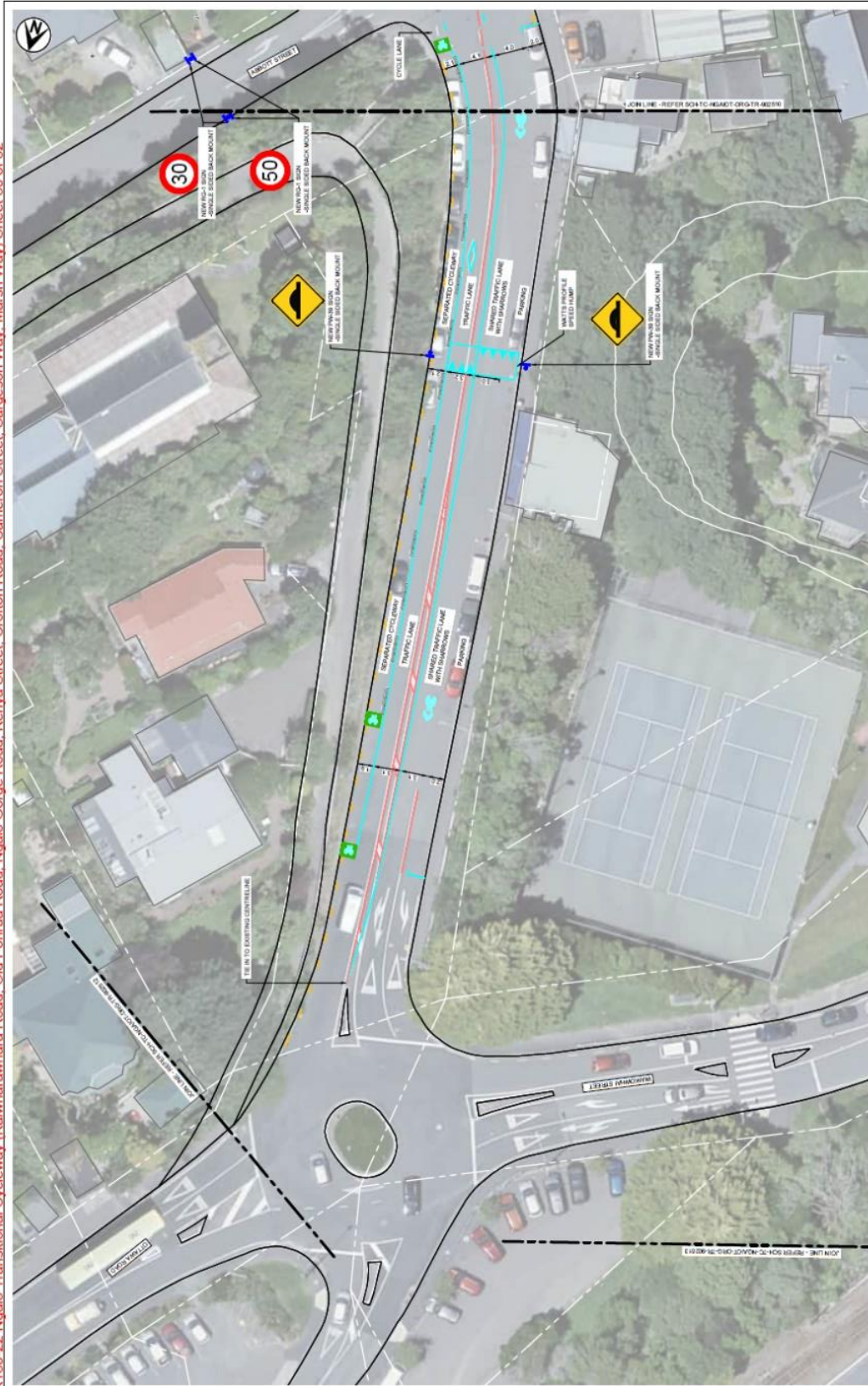


We are proposing a change in your area

Absolutely Positively  
Wellington City Council

Me Heke Ki Pōneke

TR180-22 Ngaio Transitional Cycleway (Kaiwharawhara Road, Old Pomua Road, Ngaio Gorge Road, Kenya Street, Crofton Road, Cameron Street, Sargeson Way, Marsh Way) Sheet 30 of 32



**CLIENT**  
Absolutely Positively  
Wellington City Council  
Me Heke Ki Pōneke

**DATE**  
26/07/2022

**PROJECT**  
TRANSITIONAL CYCLEWAYS  
NGAIO TRANSITIONAL

**DATE**  
26/07/2022

**PROJECT**  
CROFTON ROAD  
GENERAL ARRANGEMENT  
SHEET 2

**DATE**  
26/07/2022

**PROJECT**  
NOT FOR CONSTRUCTION

**DATE**  
26/07/2022

**PROJECT**  
SCH - TC - NGAIO-T - DRG - TR - 902511 | C03

**CLIENT**  
abley  
Taylor  
Isthmus

**DATE**  
26/07/2022

**PROJECT**  
NOT FOR CONSTRUCTION

**DATE**  
26/07/2022

**PROJECT**  
SCH - TC - NGAIO-T - DRG - TR - 902511 | C03

**CLIENT**  
Absolutely Positively  
Wellington City Council  
Me Heke Ki Pōneke

**DATE**  
26/07/2022

**PROJECT**  
NOT FOR CONSTRUCTION

**DATE**  
26/07/2022

**PROJECT**  
SCH - TC - NGAIO-T - DRG - TR - 902511 | C03

# We are proposing a change in your area

Absolutely Positively  
Wellington City Council

Me Heke Ki Pōneke

TR180-22 Ngaio Transitional Cycleway (Kaiwharwhara Road, Old Poruru Road, Ngaio Gorge Road, Kenya Street, Crofton Road, Cameron Street, Sargesson Way, Marsh Way) Sheet 31 of 32

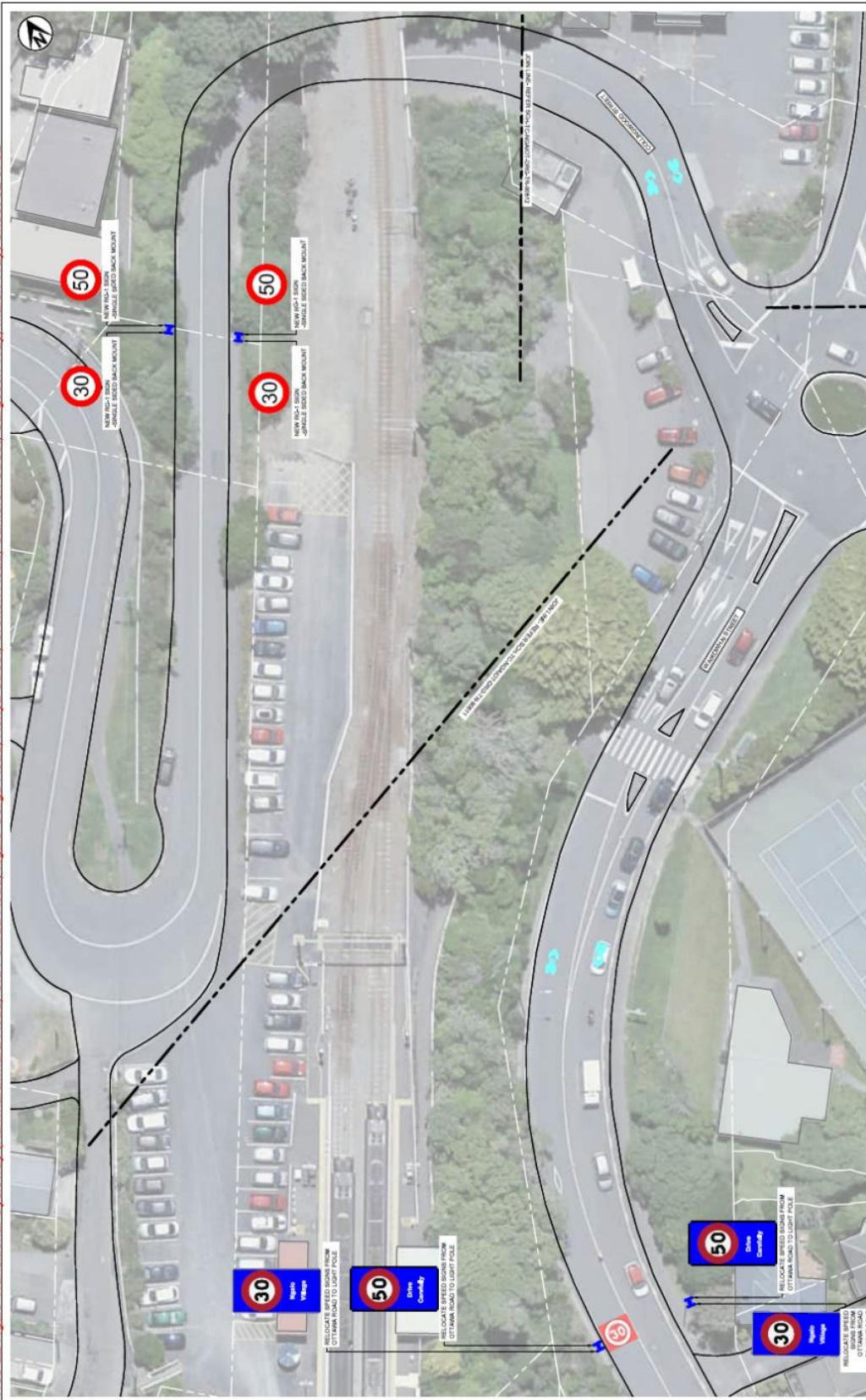


CLIENT		ORGANISATION		PROJECT		DATE		TRANSITIONAL CYCLEWAYS	
Absolutely Positively Wellington City Council PO Box 621 Te Aro		abley Benkin + Taylor Isthmus.		CROFTON ROAD GENERAL ARRANGEMENT SHEET 3		TR		NGAIO TRANSITIONAL	
LAST ISSUED BY: CH/2022/14/06		LAST PLOTTED: 2023-04-07		DRAWN BY: AHEAD		CHECKED BY: JAWARD		DOCUMENT: SCH - TC - NGAIO - DRG - TR - 902512	
LAST MODIFIED BY: CH/2022/14/06		LAST CHECKED BY: JAWARD		APPROVED BY: JAWARD		DATE: 07/10/2022		VEHICLE: C03	
SCALE: 1:200		DRAWING SCALE: 1:200		APPROVED DATE: 07/10/2022		VEHICLE CHECK: JAWARD		VEHICLE: C03	
DATE: 28/07/2022		DATE: 28/07/2022		DATE: 28/07/2022		DATE: 28/07/2022		DATE: 28/07/2022	
DRAWN BY: AHEAD		DRAWN BY: AHEAD		DRAWN BY: AHEAD		DRAWN BY: AHEAD		DRAWN BY: AHEAD	
CHECKED BY: JAWARD		CHECKED BY: JAWARD		CHECKED BY: JAWARD		CHECKED BY: JAWARD		CHECKED BY: JAWARD	
APPROVED BY: JAWARD		APPROVED BY: JAWARD		APPROVED BY: JAWARD		APPROVED BY: JAWARD		APPROVED BY: JAWARD	
APPROVED DATE: 07/10/2022		APPROVED DATE: 07/10/2022		APPROVED DATE: 07/10/2022		APPROVED DATE: 07/10/2022		APPROVED DATE: 07/10/2022	
VEHICLE CHECK: JAWARD		VEHICLE CHECK: JAWARD		VEHICLE CHECK: JAWARD		VEHICLE CHECK: JAWARD		VEHICLE CHECK: JAWARD	
VEHICLE: C03		VEHICLE: C03		VEHICLE: C03		VEHICLE: C03		VEHICLE: C03	

# We are proposing a change in your area

Absolutely Positively  
Wellington City Council  
Me Heke Ki Pōneke

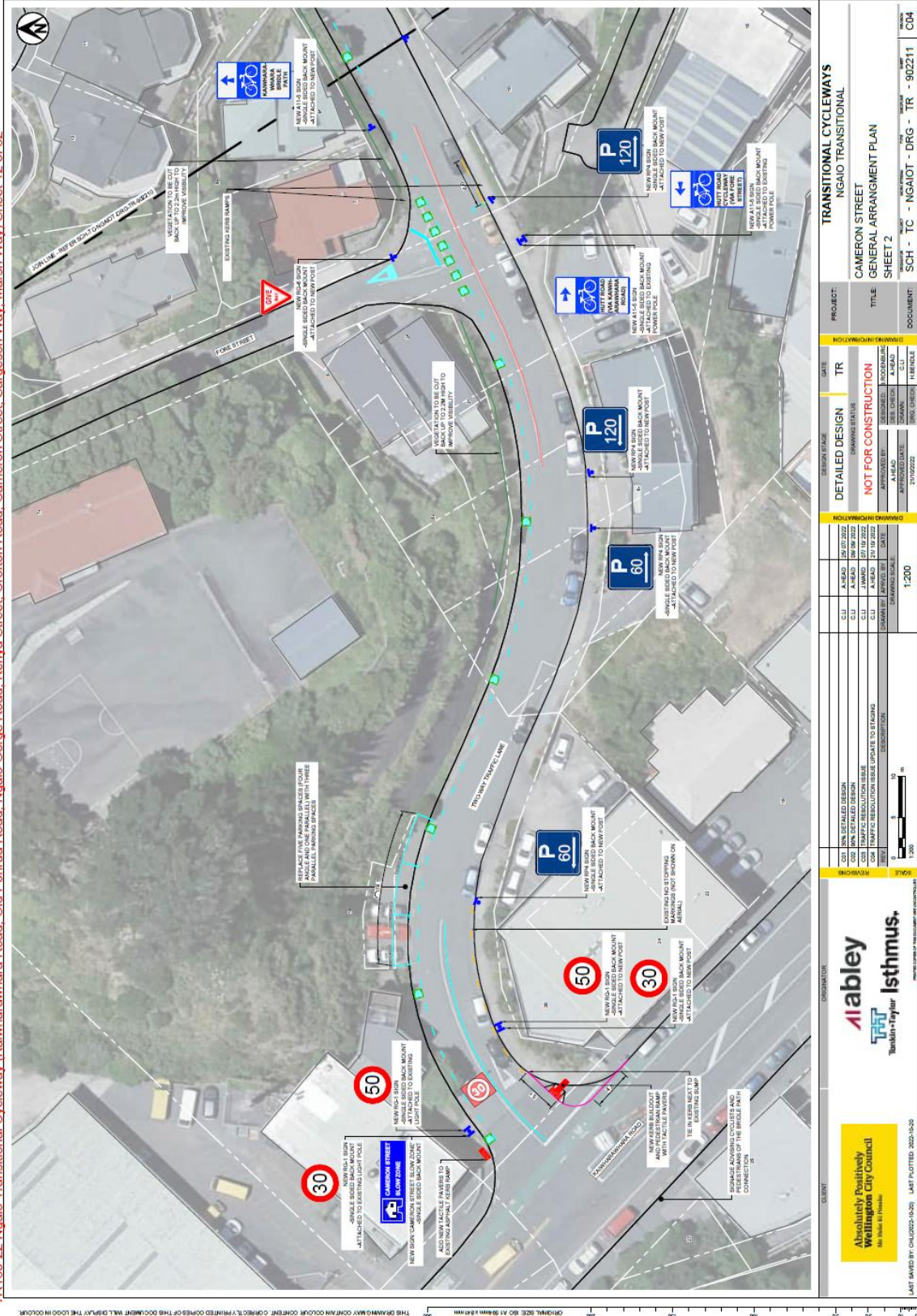
TR180-22 Ngaio Transitional Cycleway (Kaiwharwhara Road, Old Porirua Road, Ngaio Gorge Road, Ngaio Street, Sargeson Way, Marsh Way) Sheet 32 of 32



<b>CLIENT</b> Absolutely Positively Wellington City Council PO BOX 6211 PŌNEKE LAST SAVED BY: CH/LS/2022-10-06   LAST PLOTTED: 2022-10-07		<b>ORIGINATOR</b> abley TPT Tuckwell + Taylor Isthmus.		<b>SCALE</b> 1:200	
CDD: CIVIL DETAILED DESIGN CDE: CIVIL DETAILED DESIGN CDR: CIVIL DETAILED DESIGN CDF: CIVIL DETAILED DESIGN CDE: CIVIL DETAILED DESIGN CDR: CIVIL DETAILED DESIGN CDF: CIVIL DETAILED DESIGN	DATE: 26/07/2022 DATE: 26/07/2022 DATE: 26/07/2022 DATE: 26/07/2022 DATE: 26/07/2022 DATE: 26/07/2022	DRAWN BY: JAW/2022 CHECKED BY: JAW/2022 DATE: 07/10/2022 DATE: 07/10/2022	APPROVED BY: JAW/2022 DATE: 07/10/2022	DESIGN STAGE: DETAILED DESIGN DESIGNER: JAW/2022 NOT FOR CONSTRUCTION	DATE: TR PROJECT: TR
<b>PROJECT</b> TRANSITIONAL CYCLEWAYS NGAIO TRANSITIONAL		<b>TITLE</b> CROFTON ROAD GENERAL ARRANGEMENT SHEET 4		<b>DOCUMENT</b> SCH - TC - NGAIO/T - DRG - TR - 902513 C03	

## Cameron Street

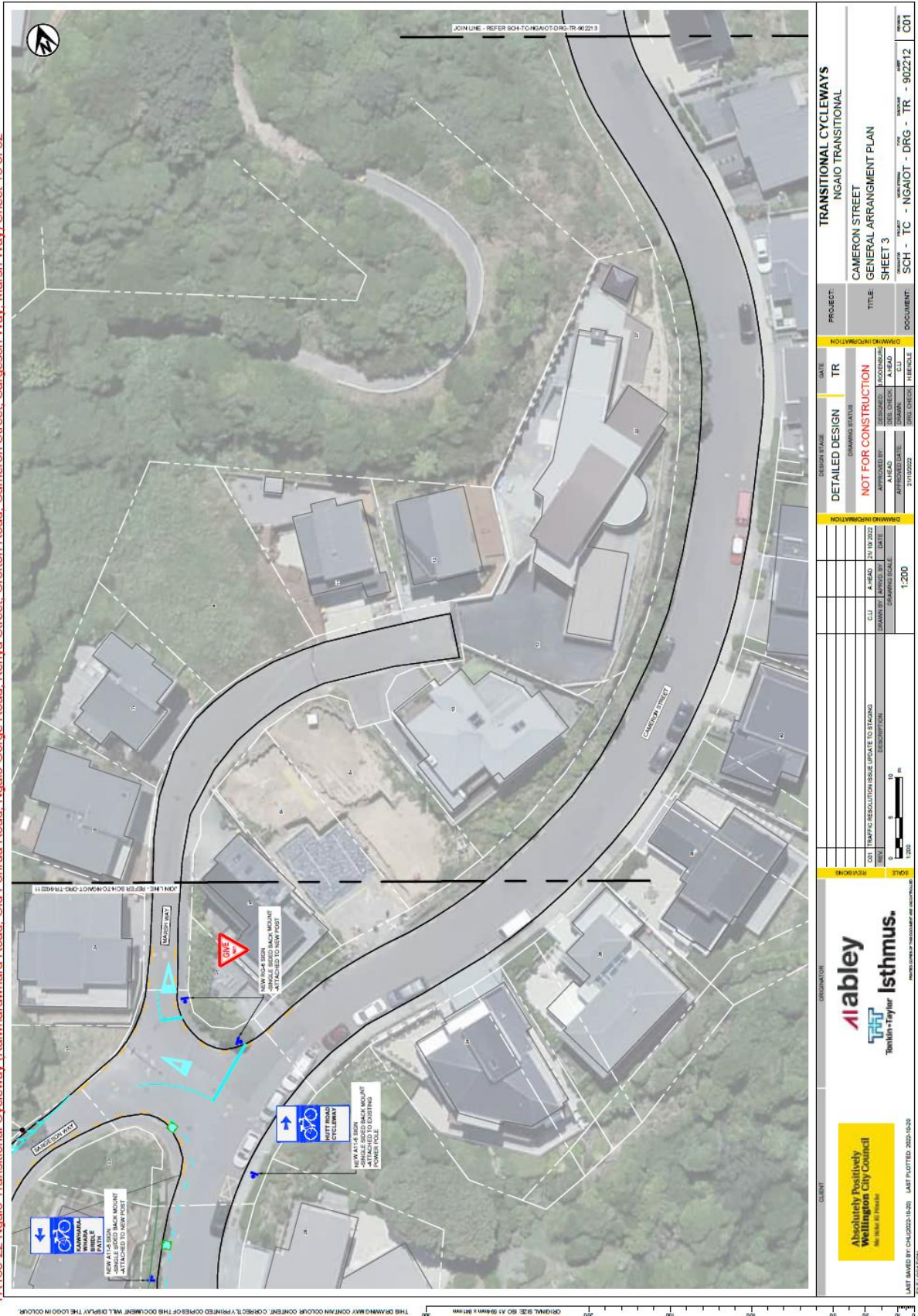
TR180-22 Ngāio Transitional Cycleway (Kaiwharawhara Road, Old Porirua Road, Ngāio Gorge Road, Kenya Street, Crofton Road, Cameron Street, Sargeson Way, Marsh Way) Sheet 12 of 32



# We are proposing a change in your area

Absolutely Positively  
Wellington City Council  
Me Heke Ki Pōneke

TR180-22 Ngaito Transitional Cycleway (Kaiwharwhara Road, Old Ponnua Road, Ngaito Gorge Road, Kenya Street, Crofton Road, Cameron Street, Sargeson Way, Marsh Way) Sheet 13 of 32



THIS DRAWING MAY CONTAIN COLOUR. COLOURS SHOWN ON THIS DOCUMENT WILL DISPLAY THE CORRECT COLOURS ON PRINTING. ORIGINAL SIZE: 80 x 110 mm (width x height)

		<p>CLIENT: Wellington City Council PROJECT: TRANSITIONAL CYCLEWAYS NGAITO TRANSITIONAL CAMERON STREET GENERAL ARRANGEMENT PLAN SHEET 3 SCHEDULE: SCH - TC - NGAIOT - DRG - TR - 902212 DOCUMENT: C01</p>
<p>DATE: TR DESIGN STAGE: DETAILED DESIGN DESIGNED BY: [REDACTED] CHECKED BY: [REDACTED] APPROVED BY: [REDACTED] DATE: 21/10/2022</p>	<p>DATE: TR DESIGN STAGE: DETAILED DESIGN DESIGNED BY: [REDACTED] CHECKED BY: [REDACTED] APPROVED BY: [REDACTED] DATE: 21/10/2022</p>	<p>DATE: 21/10/2022 SCALE: 1:200 DRAWN BY: [REDACTED] CHECKED BY: [REDACTED] DATE: 21/10/2022</p>
<p>NOT FOR CONSTRUCTION</p>		
<p>1:200</p>		

# We are proposing a change in your area

Absolutely Positively  
Wellington City Council

Me Heke Ki Pōneke

TR180-22 Ngato Transitional Cycleway (Kaiwharwhara Road, Old Porirua Road, Ngaio Gorge Road, Kenya Street, Crofton Road, Cameron Street, Sargeson Way, Marsh Way) Sheet 24 of 42



THIS DRAWING MAY CONTAIN COLOUR CONTENT. CORRECTLY PRINTED COPIES OF THIS DOCUMENT WILL DISPLAY THE COLOUR. ORIGINAL SIZE IS 0.18mm x 0.18mm. 310 300 290 280 270 260 250 240 230 220 210 200 190 180 170 160 150 140 130 120 110 100 90 80 70 60 50 40 30 20 10 0

<p>CLIENT: Absolutely Positively Wellington City Council Me Heke Ki Pōneke</p>		<p>OPERATOR: Isthmus</p>	
<p>DATE: 21/10/2022</p>		<p>DATE: 21/10/2022</p>	
<p>SCALE: 1:200</p>		<p>SCALE: 1:200</p>	
<p>PROJECT: TRANSITIONAL CYCLEWAYS NGAIO TRANSITIONAL</p>		<p>PROJECT: TR</p>	
<p>TITLE: CAMERON STREET GENERAL ARRANGEMENT PLAN SHEET 4</p>		<p>DESIGN STATUS: DETAILED DESIGN NOT FOR CONSTRUCTION</p>	
<p>DOCUMENT: SCH - TC - NGAIO - TR - 902213   C01</p>		<p>APPROVED BY: [Signature]</p>	
<p>DATE: 21/10/2022</p>		<p>DATE: 21/10/2022</p>	
<p>SCALE: 1:200</p>		<p>SCALE: 1:200</p>	

# We are proposing a change in your area

## Legal Description:

Delete from Schedule A (Time limited) of the Traffic Restrictions Schedule

Column One	Column Two	Column Three
<b>Kaiwharawhara Road</b>	P30	South side, commencing 98 metres west of its intersection with Hutt Road and extending in a westerly direction following the southern kerbline for 5.5 metres.
<b>Kaiwharawhara Road</b>	P30	South side, commencing 108 metres west of its intersection with Hutt Road and extending in a westerly direction following the southern kerbline for 5.5 metres.
<b>Kaiwharawhara Road</b>	P30, Monday - Sunday, 9:00am - 6:00pm	North side, commencing 6 metres from its intersection with Cameron Street and extending in an easterly direction following the northern kerbline for 32 metres.
<b>Cameron Street</b>	P60	North side, commencing 30 metres east of its intersection with Kaiwharawhara Road (Grid Coordinates x= 1749805.8 m, y= 5430949.9 m), and extending in a south-easterly direction following the northern kerbline for 19 metres. (4 angle and 1 parallel parking space)
<b>Kenya Street</b>	P30	East side, commencing 16 metres south of its intersection with Crofton Rd and extending in a southerly direction for 7 metres

Add to Schedule A (Time limited) of the Traffic Restrictions Schedule

Column One	Column Two	Column Three
<b>Kaiwharawhara Road (Stage 1, 2023)</b>	P30, Monday - Sunday, 7:00pm - 4:00pm (next day)	West side, commencing 23m northwest of its intersection with Hutt Road (Grid Coordinates X = 1749912.06m, Y = 5430822.44m and extending in a northwesterly direction following the western kerbline for 8 metres.
<b>Kaiwharawhara Road (Stage 1, 2023)</b>	P30, Monday - Sunday, 7:00pm - 4:00pm (next day)	West side, commencing 61 metres northwest of its intersection with Hutt Road (Grid Coordinates X = 1749912.06m, Y = 5430822.44m and extending in a northwesterly direction following the western kerbline for 58 metres.



# We are proposing a change in your area

<b>Kaiwharawhara Road (Stage 1, 2023)</b>	P30, Monday - Sunday, 7:00pm - 4:00pm (next day)	West side, commencing 128.5 metres northwest of its intersection with Hutt Road (Grid Coordinates X = 1749912.06m, Y = 5430822.44m and extending in a northwesterly direction following the western kerbline for 20.5 metres.
<b>Kaiwharawhara Road (Stage 1, 2023)</b>	P30, Monday - Sunday, 7:00pm - 4:00pm (next day)	West side, commencing 531 metres northwest of its intersection with Hutt Road (Grid Coordinates X = 1749912.06m, Y = 5430822.44m and extending in a northwesterly direction following the western kerbline for 23.5 metres.
<b>Kaiwharawhara Road (Stage 2, 2024)</b>	P30, Monday - Sunday, 9:00pm - 2:00pm (next day)	West side, commencing 23m northwest of its intersection with Hutt Road (Grid Coordinates X = 1749912.06m, Y = 5430822.44m and extending in a northwesterly direction following the western kerbline for 8 metres.
<b>Kaiwharawhara Road (Stage 2, 2024)</b>	P30, Monday - Sunday, 9:00pm - 2:00pm (next day)	West side, commencing 61 metres northwest of its intersection with Hutt Road (Grid Coordinates X = 1749912.06m, Y = 5430822.44m and extending in a northwesterly direction following the western kerbline for 58 metres.
<b>Kaiwharawhara Road (Stage 2, 2024)</b>	P30, Monday - Sunday, 9:00pm - 2:00pm (next day)	West side, commencing 128.5 metres northwest of its intersection with Hutt Road (Grid Coordinates X = 1749912.06m, Y = 5430822.44m and extending in a northwesterly direction following the western kerbline for 20.5 metres.
<b>Kaiwharawhara Road (Stage 2, 2024)</b>	P30, Monday - Sunday, 9:00pm - 2:00pm (next day)	West side, commencing 531 metres northwest of its intersection with Hutt Road (Grid Coordinates X = 1749912.06m, Y = 5430822.44m and extending in a northwesterly direction following the western kerbline for 23.5 metres.
<b>Kaiwharawhara Road (Stage 1 and 2, 2023 and 2024)</b>	P30, Monday - Sunday, 9:00am - 6:00pm	East side, commencing 8.5 metres southeast of its intersection with Cameron Street (Grid Coordinates X = 1749812.587m, Y = 5430942.588m) and extending in a southeasterly direction following the eastern kerbline for 32 metres.

# We are proposing a change in your area

<b>Kaiwharawhara Road (Stage 3, 2025)</b>	<b>P30, Monday - Sunday, 9:00am - 6:00pm</b>	<b>East side, commencing 25.5 metres southeast of its intersection with Cameron Street (Grid Coordinates X = 1749812.587m, Y = 5430942.588m) and extending in a southeasterly direction following the eastern kerbline for 15 metres.</b>
<b>Cameron Street</b>	<b>P60</b>	<b>South side, commencing 31 metres east of its intersection with Kaiwharawhara Road (Grid Coordinates X = 1749812.587m, Y = 5430942.588m) and extending in an easterly direction following the southern kerbline for 48 metres.</b>
<b>Cameron Street</b>	<b>P120</b>	<b>South side, commencing 84 metres east of its intersection with Kaiwharawhara Road (Grid Coordinates X = 1749812.587m, Y = 5430942.588m) and extending in an easterly direction following the southern kerbline for 36 metres.</b>
<b>Cameron Street</b>	<b>P24hr</b>	<b>South side, commencing 144 metres east of its intersection with Kaiwharawhara Road (Grid Coordinates X = 1749812.587m, Y = 5430942.588m) and extending in an easterly direction following the southern kerbline for 367 metres.</b>
<b>Cameron Street</b>	<b>P24hr</b>	<b>North Side, commencing 75m east of its intersection with Marsh Way (Grid coordinates x=1750015.56 y=5431061.32) and extending in an easterly direction following the northern kerb line for 146 metres.</b>
<b>Cameron Street</b>	<b>P60</b>	<b>North side, commencing 30 metres east of its intersection with Kaiwharawhara Road (Grid Coordinates x= 1749805.8 m, y= 5430949.9 m) and extending in a south-easterly direction following the northern kerbline for 19 metres.</b>
<b>Kenya Street</b>	<b>P10</b>	<b>North side, commencing 38.5 metres southwest of its intersection with Crofton Road (Grid Coordinates X = 1748584.45m, Y = 5431770.779m) and extending in a southwesterly direction following the northern kerbline for 6 metres.</b>

# We are proposing a change in your area

## Delete from Schedule B (Class restricted) of the Traffic Restrictions Schedule

Column One	Column Two	Column Three
<b>Kaiwharawhara Road</b>	Bus Stop – At All Times	South side 296.5m from its intersection with Hutt Road and extending in a westerly direction for 12m
<b>Kenya Street</b>	Bus Stop – At All Times	East side, commencing 190 metres north of its intersection with Ngaio Gorge Road and extending in a northerly direction following the eastern kerbline for 24.5 metres.
<b>Kenya Street</b>	Bus Stop – At All Times	West side, commencing 148.5 metres north of its intersection with Trelissick Cres and extending in a northerly direction following the western kerbline for 14.5 metres.

## Add to Schedule B (Class restricted) of the Traffic Restrictions Schedule

Column One	Column Two	Column Three
<b>Kaiwharawhara Road</b>	Bus Stop – At All Times	West side, commencing 50 metres northwest of its intersection with Hutt Road (Grid Coordinates X = 1749912.06m, Y = 5430822.44m and extending in a northwesterly direction following the western kerbline for 11 metres.
<b>Kaiwharawhara Road</b>	Bus Stop – At All Times	West side, commencing 289 metres northwest of its intersection with Hutt Road (Grid Coordinates X = 1749912.06m, Y = 5430822.44m and extending in a northwesterly direction following the western kerbline for 11.5 metres.
<b>Kaiwharawhara Road</b> <b>(Stage 1, 2023)</b>	Loading Zone P10, Monday - Sunday, 7:00pm - 4:00pm (next day)	West side, commencing 488.5 metres northwest of its intersection with Hutt Road (Grid Coordinates X = 1749912.06m, Y = 5430822.44m and extending in a northwesterly direction following the western kerbline for 21.5 metres.
<b>Kaiwharawhara Road</b> <b>(Stage 2, 2024)</b>	Loading Zone P10, Monday - Sunday, 9:00pm - 2:00pm (next day)	West side, commencing 488.5 metres northwest of its intersection with Hutt Road (Grid Coordinates X = 1749912.06m, Y = 5430822.44m and extending in a northwesterly direction following the western kerbline for 21.5 metres.

# We are proposing a change in your area

<b>Ngaio Gorge Road</b>	<i>Bus Stop – At All Times</i>	South side, commencing 134.5 metres west of its intersection with Kaiwharawhara Road (Grid Coordinates X = 1749066.529m, Y = 5431182.391m) and extending in a westerly direction following the southern kerbline for 15 metres.
<b>Ngaio Gorge Road</b>	<i>Bus Stop – At All Times</i>	South side, commencing 364 metres west of its intersection with Kaiwharawhara Road (Grid Coordinates X = 1749066.529m, Y = 5431182.391m) and extending in a westerly direction following the southern kerbline for 13 metres.
<b>Ngaio Gorge Road</b>	<i>Bus Stop – At All Times</i>	South side, commencing 14 metres west of its intersection with Trelissick Crescent (Grid Coordinates X = 1748444.224m, Y = 5431277.491m) and extending in a westerly direction following the southern kerbline for 15 metres.
<b>Kenya Street</b>	<i>Bus Stop – At All Times</i>	North side, commencing 143.5 metres north of its intersection with Trelissick Crescent (Grid Coordinates X = 1748383.625m, Y = 5431327.364m) and extending in a northerly direction following the northern kerbline for 15 metres.
<b>Kenya Street</b>	<i>Bus Stop – At All Times</i>	South side, commencing 178.5 metres north of its intersection with Ngaio Gorge Road (Grid Coordinates X = 1748394.214m, Y = 5431321.551m) and extending in a northerly direction following the southern kerbline for 14.5 metres.

## Add to Schedule C (Direction, Placement and Lane Use) of the Traffic Restrictions Schedule

Column One	Column Two	Column Three
<b>Kaiwharawhara Road</b> <b>(Stage 1, 2023)</b>	<b>Clearway, Monday to Friday, 4:00pm - 7:00pm</b>	West side, commencing at its intersection with Hutt Road (Grid Coordinates X = 1749912.06m, Y = 5430822.44m) and extending in a northwesterly direction following the western kerbline for 50 metres.
<b>Kaiwharawhara Road</b> <b>(Stage 1, 2023)</b>	<b>Clearway, Monday to Friday, 4:00pm - 7:00pm</b>	West side, commencing 61 metres northwest of its intersection with Hutt Road (Grid Coordinates X = 1749912.06m, Y = 5430822.44m) and extending in a northwesterly direction following the western kerbline for 228 metres.

# We are proposing a change in your area

<b>Kaiwharawhara Road</b> <b>(Stage 1, 2023)</b>	<b>Clearway, Monday to Friday, 4:00pm - 7:00pm</b>	West side, commencing 300.5 metres northwest of its intersection with Hutt Road (Grid Coordinates X = 1749912.06m, Y = 5430822.44m and extending in a northwesterly direction following the western kerbline for 390.5 metres.
<b>Kaiwharawhara Road</b> <b>(Stage 2, 2024)</b>	<b>Clearway, Monday to Friday, 2:00pm - 9:00pm</b>	West side, commencing at its intersection with Hutt Road (Grid Coordinates X = 1749912.06m, Y = 5430822.44m and extending in a northwesterly direction following the western kerbline for 50 metres.
<b>Kaiwharawhara Road</b> <b>(Stage 2, 2024)</b>	<b>Clearway, Monday to Friday, 2:00pm - 9:00pm</b>	West side, commencing 61 metres northwest of its intersection with Hutt Road (Grid Coordinates X = 1749912.06m, Y = 5430822.44m and extending in a northwesterly direction following the western kerbline for 228 metres.
<b>Kaiwharawhara Road</b> <b>(Stage 2, 2024)</b>	<b>Clearway, Monday to Friday, 2:00pm - 9:00pm</b>	West side, commencing 300.5 metres northwest of its intersection with Hutt Road (Grid Coordinates X = 1749912.06m, Y = 5430822.44m and extending in a northwesterly direction following the western kerbline for 390.5 metres.

Delete from Schedule D (No Stopping) of the Traffic Restrictions Schedule

Column One	Column Two	Column Three
<b>Kaiwharawhara Road</b>	No Stopping – At All Times	West side, commencing 43.5 metres north of its intersection with Hutt Road (Grid coordinates x= 1,749,909.8 m, y= 5,430,820.5m), and extending in a northerly direction following the western kerb line for 7.5 metres.
<b>Kaiwharawhara Road</b>	No Stopping – At All Times	South side, commencing at a point 580 metres west of its intersection with Hutt Road and extending in a westerly direction following the southern kerbline for 154 metres.
<b>Kaiwharawhara Road</b>	No Stopping – At All Times	West side, commencing 149.5 metres north of its intersection with Hutt Road (Grid coordinates x= 1,749,913.1m, y= 5,430,822.8 m), and extending in a northerly direction following the western kerb line for 8.5 metres."

## We are proposing a change in your area

<b>Kaiwharawhara Road</b>	<i>No Stopping – At All Times</i>	<i>South side 308.5m from its intersection with Hutt Road and extending in a westerly direction for 105.5m</i>
<b>Cameron Street</b>	<i>No Stopping – At All Times</i>	<i>Southeast side, commencing from its intersection with Kaiwharawhara Road (Grid Coordinates X=1,749,813.33m Y=5,430,941.57m) and extending in a north-easterly direction, following the southeastern kerb line for 18 metres</i>
<b>Cameron Street</b>	<i>No Stopping – At All Times</i>	<i>North Side, commencing 43.67 metres east of its intersection with Marsh Way (Grid coordinates x=1750011.04 y=5431057.11) and extending in an easterly direction following the northern kerb line for 31 metres.</i>
<b>Ngaio Gorge Road</b>	<i>No Stopping – At All Times</i>	<i>Northwest side, commencing at its intersection with Ngaio Gorge Road and extending in a southwesterly direction following the northwestern kerbline for 24.5 metres.</i>
<b>Ngaio Gorge Road</b>	<i>No Stopping – At All Times</i>	<i>Southeast side, commencing at its intersection with Ngaio Gorge Road and extending in a southwesterly direction following the southeastern kerbline for 24.5 metres.</i>
<b>Kenya Street</b>	<i>No Stopping – At All Times</i>	<i>West side, commencing from its intersection with Crofton Road and extending in a southerly direction following the western kerbline for 26 metres.</i>
<b>Kenya Street</b>	<i>No Stopping – At All Times</i>	<i>East side, commencing from its intersection with Ngaio Gorge Road and extending in a northerly direction following the eastern kerbline for 33.5 metres.</i>
<b>Kenya Street</b>	<i>No Stopping – At All Times</i>	<i>East side, commencing 97.5 metres north of its intersection with Ngaio Gorge Road and extending in a northerly direction following the eastern kerbline for 9.5 metres.</i>
<b>Kenya Street</b>	<i>No Stopping – At All Times</i>	<i>East side, commencing 127.5 metres north of its intersection with Ngaio Gorge Road and extending in a northerly direction following the eastern kerbline for 24 metres.</i>

## We are proposing a change in your area

<b>Kenya Street</b>	<i>No Stopping – At All Times</i>	<i>Northeast side, commencing 6 metres from its intersection with Kenya Street and extending in a northwesterly direction following the northeastern kerbline for 14 metres.</i>
<b>Crofton Road</b>	<i>No Stopping – At All Times</i>	<i>West side, commencing at its intersection with Kenya Street and extending in a northerly direction following the western kerbline for 3 metres.</i>
<b>Crofton Road</b>	<i>No Stopping – At All Times</i>	<i>South side, commencing 5.5 metres west of its intersection with Kenya Street and extending in a westerly direction following the western kerbline for 12 metres.</i>
<b>Crofton Road</b>	<i>No Stopping – At All Times</i>	<i>North side, commencing at its intersection with Abbott St and extending in an westerly direction following the northern kerbline for 7 metres.</i>

Add to Schedule D (No Stopping) of the Traffic Restrictions Schedule

<b>Column One</b>	<b>Column Two</b>	<b>Column Three</b>
<b>Kaiwharawhara Road</b>  <b>(Stages 1 and 2, 2023 to 2024)</b>	<b>No Stopping – At All Times</b>	<b>West side, commencing at its intersection with Hutt Road (Grid Coordinates X = 1749912.06m, Y = 5430822.44m and extending in a northwesterly direction following the western kerbline for 23 metres.</b>
<b>Kaiwharawhara Road</b>  <b>(Stages 1 and 2, 2023 to 2024)</b>	<b>No Stopping – At All Times</b>	<b>West side, commencing 31m northwest of its intersection with Hutt Road (Grid Coordinates X = 1749912.06m, Y = 5430822.44m and extending in a northwesterly direction following the western kerbline for 19 metres.</b>
<b>Kaiwharawhara Road</b>  <b>(Stages 1 and 2, 2023 to 2024)</b>	<b>No Stopping – At All Times</b>	<b>West side, commencing 107 metres northwest of its intersection with Hutt Road (Grid Coordinates X = 1749912.06m, Y = 5430822.44m and extending in a northwesterly direction following the western kerbline for 26.5 metres.</b>

# We are proposing a change in your area

<b>Kaiwharawhara Road</b> <b>(Stages 1 and 2, 2023 to 2024)</b>	<b>No Stopping – At All Times</b>	West side, commencing 149 metres northwest of its intersection with Hutt Road (Grid Coordinates X = 1749912.06m, Y = 5430822.44m and extending in a northwesterly direction following the western kerbline for 140 metres.
<b>Kaiwharawhara Road</b> <b>(Stages 1 and 2, 2023 to 2024)</b>	<b>No Stopping – At All Times</b>	West side, commencing 300.5 metres northwest of its intersection with Hutt Road (Grid Coordinates X = 1749912.06m, Y = 5430822.44m and extending in a northwesterly direction following the western kerbline for 187.5 metres.
<b>Kaiwharawhara Road</b> <b>(Stages 1 and 2, 2023 to 2024)</b>	<b>No Stopping – At All Times</b>	West side, commencing 554.5 metres northwest of its intersection with Hutt Road (Grid Coordinates X = 1749912.06m, Y = 5430822.44m and extending in a northwesterly direction following the western kerbline for 146.5 metres.
<b>Kaiwharawhara Road</b> <b>(Stage 3, 2025)</b>	<b>No Stopping – At All Times</b>	West side, commencing at its intersection with Hutt Road (Grid Coordinates X = 1749912.06m, Y = 5430822.44m and extending in a northwesterly direction following the western kerbline for 50 metres.
<b>Kaiwharawhara Road</b> <b>(Stage 3, 2025)</b>	<b>No Stopping – At All Times</b>	West side, commencing 61 metres northwest of its intersection with Hutt Road (Grid Coordinates X = 1749912.06m, Y = 5430822.44m and extending in a northwesterly direction following the western kerbline for 228 metres.
<b>Kaiwharawhara Road</b> <b>(Stage 3, 2025)</b>	<b>No Stopping – At All Times</b>	West side, commencing 300.5 metres northwest of its intersection with Hutt Road (Grid Coordinates X = 1749912.06m, Y = 5430822.44m and extending in a northwesterly direction following the western kerbline for 390.5 metres.
<b>Kaiwharawhara Road (Stages 1 and 2, 2023 to 2024)</b>	<b>No Stopping – At All Times</b>	East side, commencing at its intersection with Cameron Street (Grid Coordinates X = 1749812.587m, Y = 5430942.588m and extending in a southeasterly direction following the eastern kerbline for 6 metres.



# We are proposing a change in your area

<b>Kaiwharawhara Road (Stage 3, 2025)</b>	<b>No Stopping – At All Times</b>	East side, commencing at its intersection with Cameron Street (Grid Coordinates X = 1749812.587m, Y = 5430942.588m and extending in a southeasterly direction following the eastern kerbline for 25.5 metres.
<b>Cameron Street</b>	<b>No Stopping – At All Times</b>	South side, commencing 130 metres east of its intersection with Kaiwharawhara Road (Grid Coordinates X = 1749812.587m, Y = 5430942.588m and extending in an easterly direction following the southern kerbline for 6 metres.
<b>Cameron Street</b>	<b>No Stopping – At All Times</b>	South side, commencing at its intersection with Kaiwharawhara Road (Grid Coordinates X = 1749812.587m, Y = 5430942.588m and extending in an easterly direction following the southern kerbline for 31 metres.
<b>Cameron Street</b>	<b>No Stopping – At All Times</b>	North side, commencing at its intersection with Marsh Way (Grid coordinates x=1750011.04 y=5431057.11) and extending in an easterly direction following the northern kerb line for 75 metres.
<b>Cameron Street</b>	<b>No Stopping – At All Times</b>	North Side, commencing 221m east of its intersection with Marsh Way (Grid coordinates x=1750015.56 y=5431061.32) and extending in an easterly direction following the northern kerb line for 35 metres.
<b>Marsh Way</b>	<b>No Stopping – At All Times</b>	South side, commencing at its intersection with Marsh Way (Grid coordinates x=1750015.56 y=5431061.32) and extending in an easterly direction following the southern kerb line for 8 metres.
<b>Marsh Way</b>	<b>No Stopping – At All Times</b>	North side, commencing at its intersection with Sargeson Way (Grid coordinates x=1750008.14 y=5431066.07) and extending in an easterly direction following the northern kerb line for 12 metres.
<b>Sargeson Way</b>	<b>No Stopping – At All Times</b>	South side, commencing at its intersection with Marsh Way (Grid coordinates x=1750011.04 y=5431057.11) and extending in a westerly direction following the southern kerb line for 27 metres.

## We are proposing a change in your area

<b>Sargeson Way</b>	No Stopping – At All Times	North side, commencing at its intersection with Marsh Way (Grid coordinates $x=1750008.14$ $y=5431066.07$ ) and extending in a westerly direction following the northern kerb line for 10 metres.
<b>Old Porirua Road</b>	No Stopping – At All Times	North side, commencing at its intersection with Kaiwharawhara Road (Grid Coordinates $X = 1749650.973m$ , $Y = 5431089.75m$ ) and extending in a westerly direction following the northern kerblines for 8 metres.
<b>Ngaio Gorge Road</b>	No Stopping – At All Times	South side, commencing at its intersection with Kaiwharawhara Road (Grid Coordinates $X = 1749066.529m$ , $Y = 5431182.391m$ ) and extending in a westerly direction following the southern kerblines for 133.5 metres.
<b>Ngaio Gorge Road</b>	No Stopping – At All Times	South side, commencing 149.5 metres west of its intersection with Kaiwharawhara Road (Grid Coordinates $X = 1749066.529m$ , $Y = 5431182.391m$ ) and extending in a westerly direction following the southern kerblines for 214 metres.
<b>Ngaio Gorge Road</b>	No Stopping – At All Times	South side, commencing at its intersection with Trelissick Crescent (Grid Coordinates $X = 1748458.814m$ , $Y = 5431272.233m$ ) and extending in an easterly direction following the southern kerblines for 432 metres.
<b>Ngaio Gorge Road</b>	No Stopping – At All Times	South side, commencing 29 metres west of its intersection with Trelissick Crescent (Grid Coordinates $X = 1748444.224m$ , $Y = 5431277.491m$ ) and extending in a westerly direction following the southern kerblines for 36 metres.
<b>Ngaio Gorge Road</b>	No Stopping – At All Times	North side, commencing at its intersection with Kenya Street (Grid Coordinates $X = 1748394.214m$ , $Y = 5431321.551m$ ) and extending in an easterly direction following the northern kerblines for 83 metres.
<b>Kenya Street</b>	No Stopping – At All Times	North side, commencing 107.5 metres north of its intersection with Trelissick Crescent (Grid Coordinates $X = 1748383.625m$ , $Y = 5431327.364m$ ) and extending in a northerly direction following the northern kerblines for 36 metres.

## We are proposing a change in your area

<b>Kenya Street</b>	<i>No Stopping – At All Times</i>	<i>North side, commencing at its intersection with Crofton Road (Grid Coordinates X = 1748584.45m, Y = 5431770.779m) and extending in a westerly direction following the northern kerbline for 38 metres.</i>
<b>Kenya Street</b>	<i>No Stopping – At All Times</i>	<i>South side, commencing at its intersection with Ngaio Gorge Road (Grid Coordinates X = 1748394.214m, Y = 5431321.551m) and extending in a northerly direction following the southern kerbline for 178.5 metres.</i>
<b>Kenya Street</b>	<i>No Stopping – At All Times</i>	<i>South side, commencing at its intersection with Crofton Road (Grid Coordinates X = 1748587.606m, Y = 5431757.751m) and extending in a southwesterly direction following the southern kerbline for 300 metres.</i>
<b>Crofton Road</b>	<i>No Stopping – At All Times</i>	<i>West side, commencing at its intersection with Kenya Street (Grid Coordinates X = 1748584.45m, Y = 5431770.779m) and extending in a northerly direction following the western kerbline for 26 metres.</i>
<b>Crofton Road</b>	<i>No Stopping – At All Times</i>	<i>East side, commencing at its intersection with Ottawa Road (Grid Coordinates X = 1748563.806m, Y = 5431918.344m) and extending in a southeasterly direction following the eastern kerbline for 115 metres.</i>

### Add to Schedule G (Give Way and Stop) of the Traffic Restrictions Schedule

<b>Column One</b>	<b>Column Two</b>	<b>Column Three</b>
<b>Marsh Way</b>	<i>Give Way</i>	<i>West bound, at its intersection with Sargeson Way.</i>
<b>Marsh Way</b>	<i>Give Way</i>	<i>South bound, at its intersection with Cameron Street.</i>
<b>Fore Street</b>	<i>Give Way</i>	<i>South bound, at its intersection with Cameron Street.</i>

# We are proposing a change in your area

## Add to Schedule H (Pedestrian crossing) of the Traffic Restrictions Schedule

Column One	Column Two	Column Three
<b>Ngaio Gorge Road</b>	Pedestrian Crossing	South side, commencing 7.5 metres west of its intersection with Trelissick Crescent (Grid Coordinates X = 1748444.224m, Y = 5431277.491m) and extending in a westerly direction following the southern kerbline for 3.5 metres.

## Add to Schedule I (Cycle lane) of the Traffic Restrictions Schedule

Column One	Column Two	Column Three
<b>Kaiwharawhara Road (Stage 3, 2025)</b>	Cycle Lane	West side, commencing at its intersection with Hutt Road (Grid Coordinates X = 1749912.06m, Y = 5430822.44m and extending in a northwesterly direction following the western kerbline for 50 metres.
<b>Kaiwharawhara Road (Stage 3, 2025)</b>	Cycle Lane	West side, commencing 61 metres northwest of its intersection with Hutt Road (Grid Coordinates X = 1749912.06m, Y = 5430822.44m and extending in a northwesterly direction following the western kerbline for 228 metres.
<b>Kaiwharawhara Road (Stage 3, 2025)</b>	Cycle Lane	West side, commencing 300.5 metres northwest of its intersection with Hutt Road (Grid Coordinates X = 1749912.06m, Y = 5430822.44m and extending in a northwesterly direction following the western kerbline for 390.5 metres.
<b>Ngaio Gorge Road</b>	Cycle Lane	South side, commencing at its intersection with Kaiwharawhara Road (Grid Coordinates X = 1749066.529m, Y = 5431182.391m) and extending in a westerly direction following the southern kerbline for 133.5 metres.
<b>Ngaio Gorge Road</b>	Cycle Lane	South side, commencing 149.5 metres west of its intersection with Kaiwharawhara Road (Grid Coordinates X = 1749066.529m, Y = 5431182.391m) and extending in a westerly direction following the southern kerbline for 214 metres.

# We are proposing a change in your area

<b>Ngaio Gorge Road</b>	Cycle Lane	South side, commencing at its intersection with Trelissick Crescent (Grid Coordinates X = 1748458.814m, Y = 5431272.233m) and extending in an easterly direction following the southern kerbline for 432 metres.
<b>Ngaio Gorge Road</b>	Cycle Lane	South side, commencing 29 metres west of its intersection with Trelissick Crescent (Grid Coordinates X = 1748444.224m, Y = 5431277.491m) and extending in a westerly direction following the southern kerbline for 36 metres.
<b>Ngaio Gorge Road</b>	Cycle Lane	North side, commencing at its intersection with Kenya Street (Grid Coordinates X = 1748394.214m, Y = 5431321.551m) and extending in an easterly direction following the northern kerbline for 26 metres.
<b>Kenya Street</b>	Cycle Lane	South side, commencing at its intersection with Ngaio Gorge Road (Grid Coordinates X = 1748394.214m, Y = 5431321.551m) and extending in a northerly direction following the southern kerbline for 178.5 metres.
<b>Kenya Street</b>	Cycle Lane	South side, commencing 27.5 metres southwest of its intersection with Crofton Road (Grid Coordinates X = 1748587.606m, Y = 5431757.751m) and extending in a southwesterly direction following the southern kerbline for 272.5 metres.
<b>Crofton Road</b>	Cycle Lane	East side, commencing at its intersection with Ottawa Road (Grid Coordinates X = 1748563.806m, Y = 5431918.344m) and extending in a southeasterly direction following the eastern kerbline for 115 metres.

Prepared By: Jonathan Kennett (Project Lead, Transitional Cycleways)  
Approved By: Brad Singh (Manager Transport & Infrastructure)

Date: