

aurecon
www.aurecongroup.com

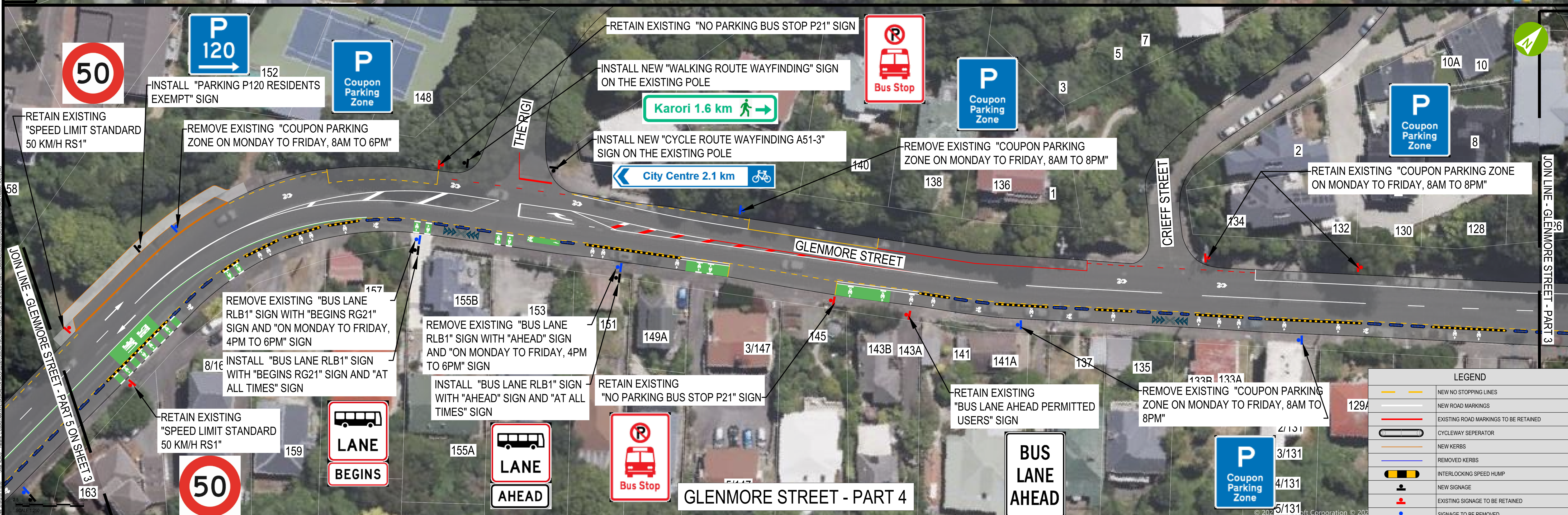
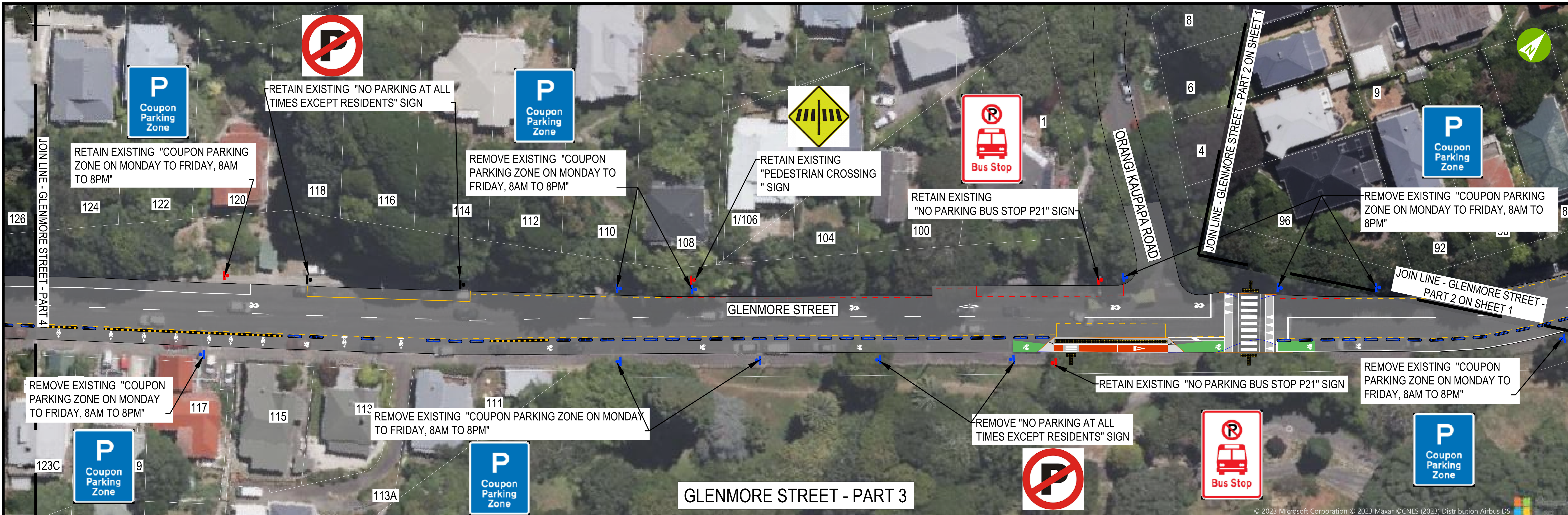
CLIENT
Absolutely Positively Wellington City Council
Me Heke Ki Pōneke

REV	DATE	REVISION DETAILS	APPROVED
A	07/07/23	FOR DISCUSSION / REVIEW	G. MURISON
B	11/08/23	FOR DISCUSSION / REVIEW	W. HU
C	06/09/23	FOR DISCUSSION / REVIEW	G. MURISON

SCALE	SIZE
1:250	A0

WORK IN PROGRESS	PROJECT
APPROVED	KARORI TO BOTANIC GARDEN KAI PĀEKAKA CONNECTIONS WCC TRANSITIONAL CYCLEWAYS
DATE	TITLE
	SIGNAGE PRIMARY ROUTE - 90% DESIGN GLENMORE STREET SHEET 1 (OF 9)

LEGEND	
	NEW NO STOPPING LINES
	NEW ROAD MARKINGS
	EXISTING ROAD MARKINGS TO BE RETAINED
	CYCLEWAY SEPARATOR
	NEW KERBS
	REMOVED KERBS
	INTERLOCKING SPEED HUMP
	NEW SIGNAGE
	EXISTING SIGNAGE TO BE RETAINED
	SIGNAGE TO BE REMOVED



LEGEND	
	NEW NO STOPPING LINES
	NEW ROAD MARKINGS
	EXISTING ROAD MARKINGS TO BE RETAINED
	CYCLEWAY SEPARATOR
	NEW KERBS
	REMOVED KERBS
	INTERLOCKING SPEED HUMP
	NEW SIGNAGE
	EXISTING SIGNAGE TO BE RETAINED
	SIGNAGE TO BE REMOVED

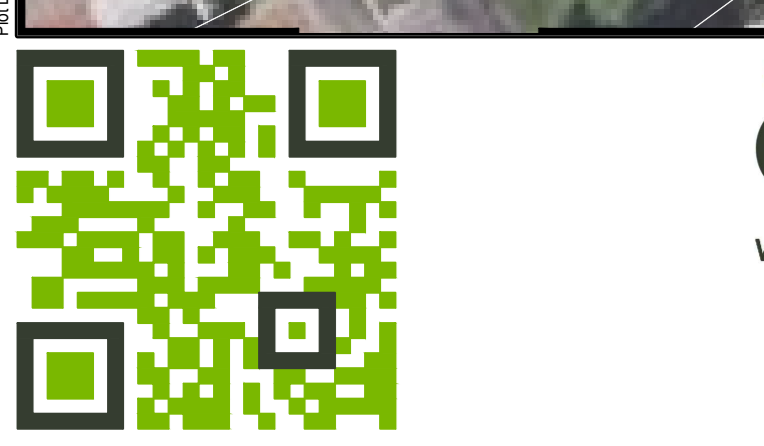
aurecon
www.aurecongroup.com

CLIENT
Absolutely Positively Wellington City Council
Me Heke Ki Poneke

REV	DATE	REVISION DETAILS	APPROVED	SCALE	SIZE
A	07/07/23	FOR DISCUSSION / REVIEW	G. MURISON	1:250	A0
B	11/08/23	FOR DISCUSSION / REVIEW	G. MURISON		
C	06/09/23	FOR DISCUSSION / REVIEW	G. MURISON		

WORK IN PROGRESS	PROJECT
APPROVED	KARORI TO BOTANIC GARDEN KI PAKAKA CONNECTIONS WCC TRANSITIONAL CYCLEWAYS
DATE	TITLE
	SIGNAGE PRIMARY ROUTE - 90% DESIGN GLENMORE STREET SHEET 2 (OF 9)

DRAWING No.	PROJECT No.	AREA	TRC	DGC	NUMBER	REV
522550	0000	DRG	DGN	0101	C	

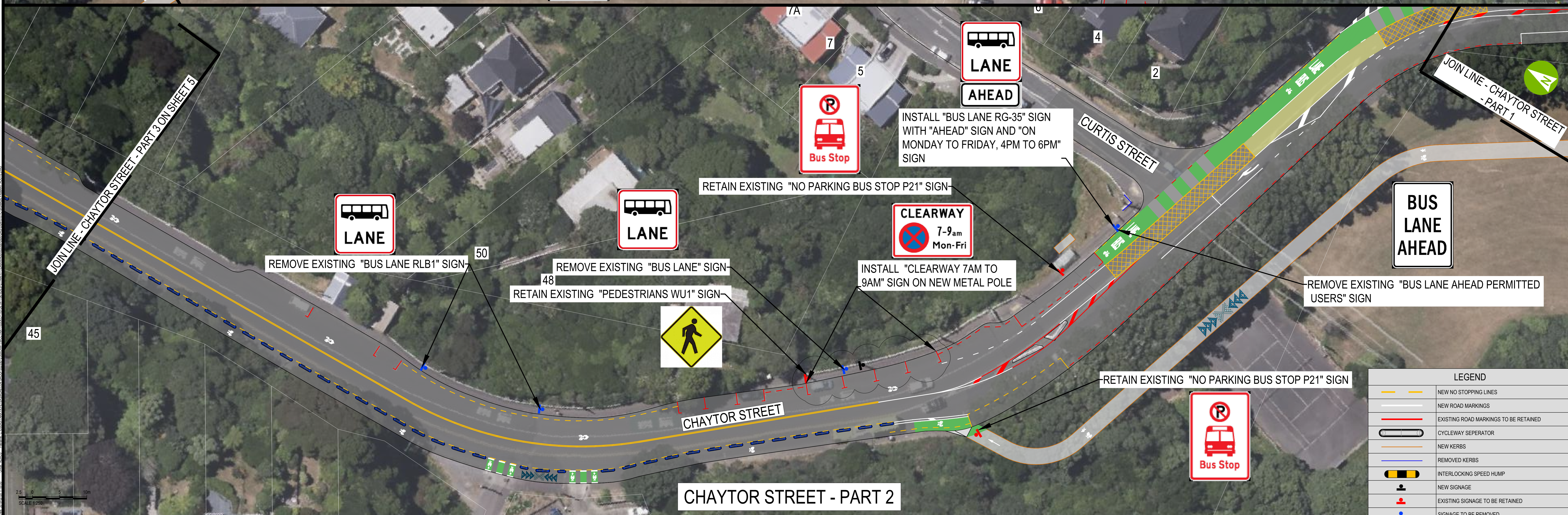
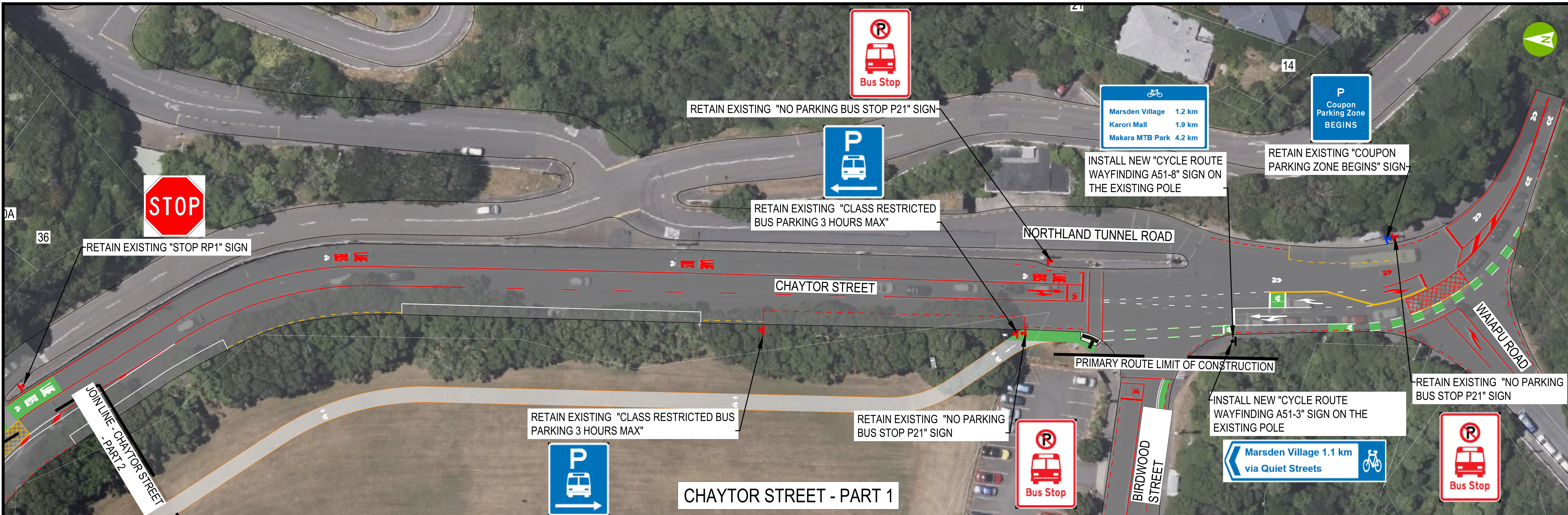


REV	DATE	REVISION DETAILS	APPROVED	SCALE	SIZE
A	07/07/23	FOR DISCUSSION / REVIEW	G. MURISON	1:250	A0
B	11/09/23	FOR DISCUSSION / REVIEW	W. H. U.		
C	06/09/23	FOR DISCUSSION / REVIEW	G. MURISON		

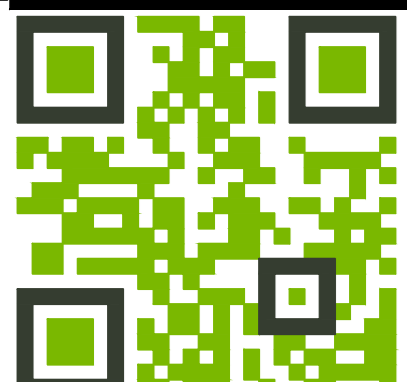
WORK IN PROGRESS	PROJECT
APPROVED	KARORI TO BOTANIC GARDEN KI PĀEKAKA CONNECTIONS WCC TRANSITIONAL CYCLEWAYS
DATE	SIGNAGE PRIMARY ROUTE - 90% DESIGN GLENMORE STREET SHEET 3 (OF 9)

TITLE	PROJECT No.	AREA	DATE	NUMBER	REV
	522550	0000	DRG	0101	C

LEGEND	
	NEW NO STOPPING LINES
	NEW ROAD MARKINGS
	EXISTING ROAD MARKINGS TO BE RETAINED
	CYCLEWAY SEPARATOR
	NEW KERBS
	REMOVED KERBS
	INTERLOCKING SPEED HUMP
	NEW SIGNAGE
	EXISTING SIGNAGE TO BE RETAINED
	SIGNAGE TO BE REMOVED



LEGEND	
	NEW NO STOPPING LINES
	NEW ROAD MARKINGS
	EXISTING ROAD MARKINGS TO BE RETAINED
	CYCLEWAY SEPARATOR
	NEW KERBS
	REMOVED KERBS
	INTERLOCKING SPEED HUMP
	NEW SIGNAGE
	EXISTING SIGNAGE TO BE RETAINED
	SIGNAGE TO BE REMOVED



aurecon
www.aurecongroup.com

CLIENT

**Absolutely Positively
Wellington City Council**
Me Heke Ki Poneke

REV	DATE	REVISION DETAILS	APPROVED	SCALE	SIZE
A	07/07/23	FOR DISCUSSION / REVIEW	G.MURISON	1:250	A0
B	11/08/23	FOR DISCUSSION / REVIEW	G.MURISON		
C	06/09/23	FOR DISCUSSION / REVIEW	G.MURISON		

WORK IN PROGRESS

APPROVED DATE

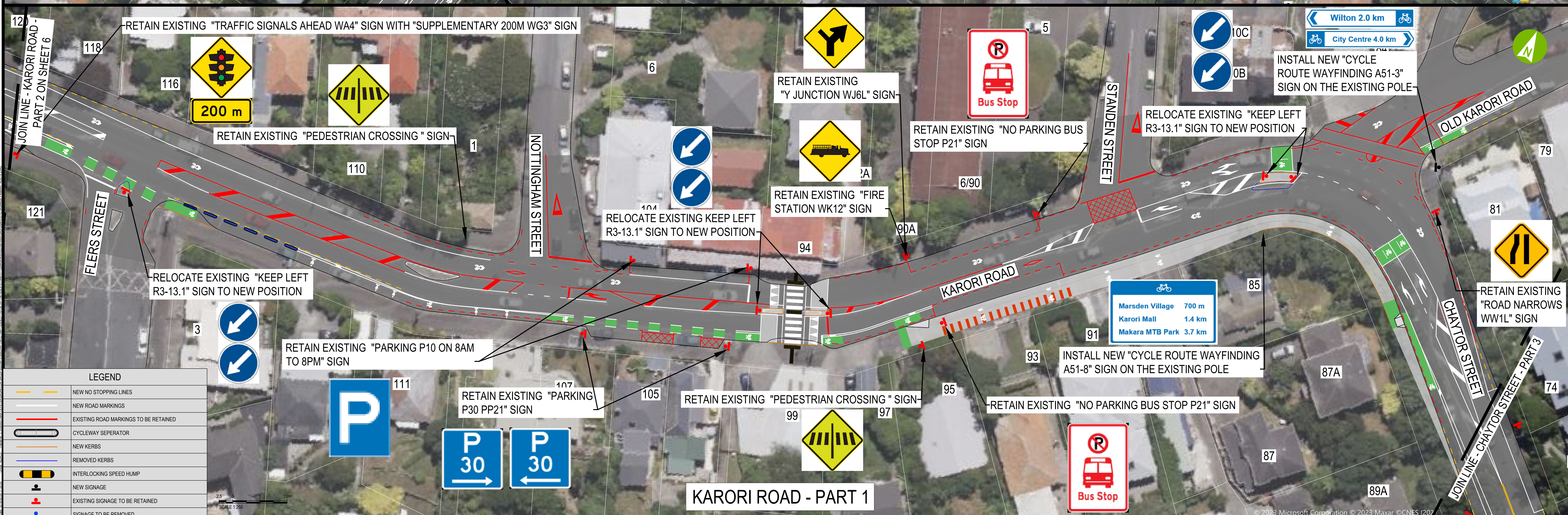
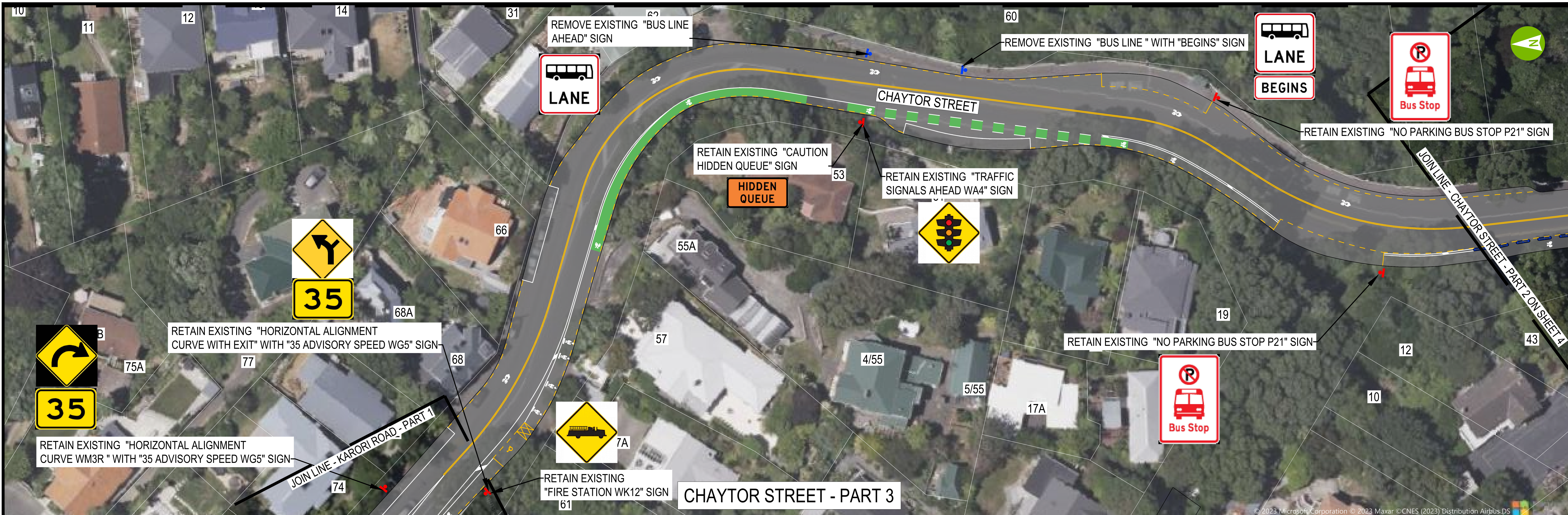
PROJECT

KARORI TO BOTANIC GARDEN KI PAEKAKA CONNECTIONS
WCC TRANSITIONAL CYCLEWAYS

TITLE

SIGNAGE PRIMARY ROUTE - 90% DESIGN
CHAYTOR STREET
SHEET 4 (OF 9)

DRAWING No.	PROJECT No.	AREA	TTC	DCC	NUMBER	REV
522550	0000	DRG	DGN	0101	C	



LEGEND	
	NEW NO STOPPING LINES
	NEW ROAD MARKINGS
	EXISTING ROAD MARKINGS TO BE RETAINED
	CYCLEWAY SEPARATOR
	NEW KERBS
	REMOVED KERBS
	INTERLOCKING SPEED HUMP
	NEW SIGNAGE
	EXISTING SIGNAGE TO BE RETAINED
	SIGNAGE TO BE REMOVED

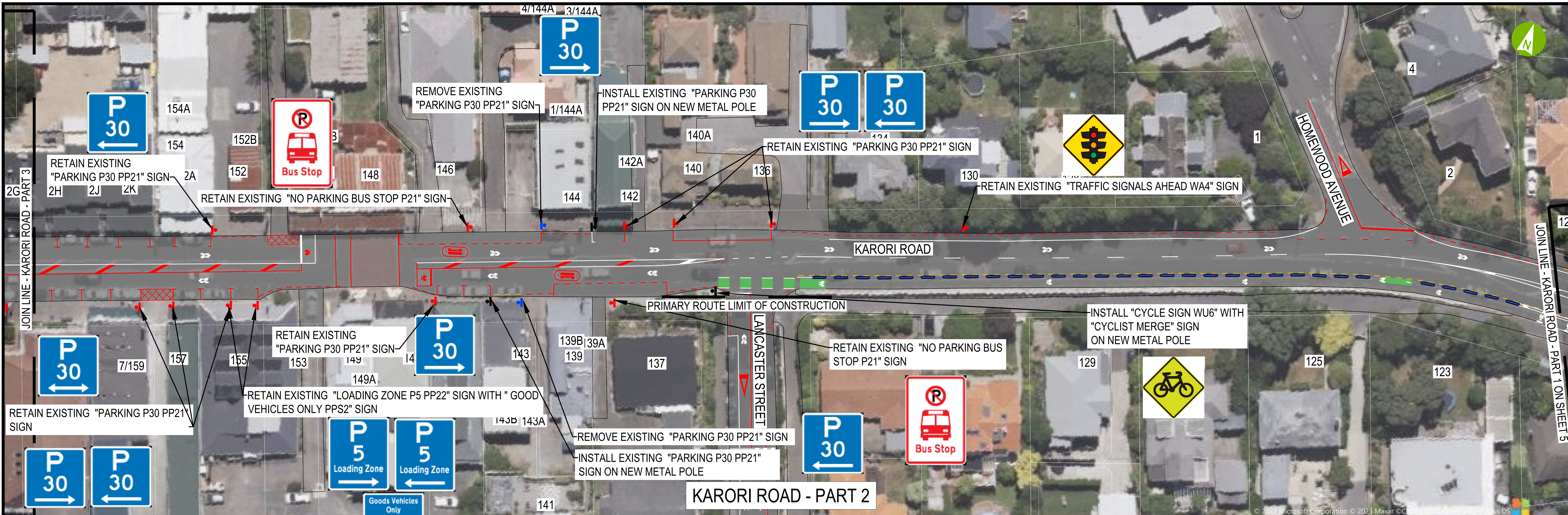
aurecon
www.aurecongroup.com

CLIENT

Absolutely Positively Wellington City Council
Me Heke Ki Poneke

REV	DATE	REVISION DETAILS	APPROVED	SCALE	SIZE	WORK IN PROGRESS	PROJECT
A	07/07/23	FOR DISCUSSION / REVIEW	G. MURISON	1:250	A0	WORK IN PROGRESS	KARORI TO BOTANIC GARDEN KI PAKAKA CONNECTIONS WCC TRANSITIONAL CYCLEWAYS
B	11/09/23	FOR DISCUSSION / REVIEW	G. MURISON			APPROVED	SIGNAGE PRIMARY ROUTE - 90% DESIGN CHAYTOR STREET & KARORI ROAD SHEET 5 (OF 9)
C	06/09/23	FOR DISCUSSION / REVIEW	G. MURISON				

DRAWING No.	AREA	ITC	DGN	NUMBER	REV
522550	0000	DRG	DGN	0101	C



LEGEND	
	NEW NO STOPPING LINES
	NEW ROAD MARKINGS
	EXISTING ROAD MARKINGS TO BE RETAINED
	CYCLEWAY SEPARATOR
	NEW KERBS
	REMOVED KERBS
	INTERLOCKING SPEED HUMP
	NEW SIGNAGE
	EXISTING SIGNAGE TO BE RETAINED
	SIGNAGE TO BE REMOVED

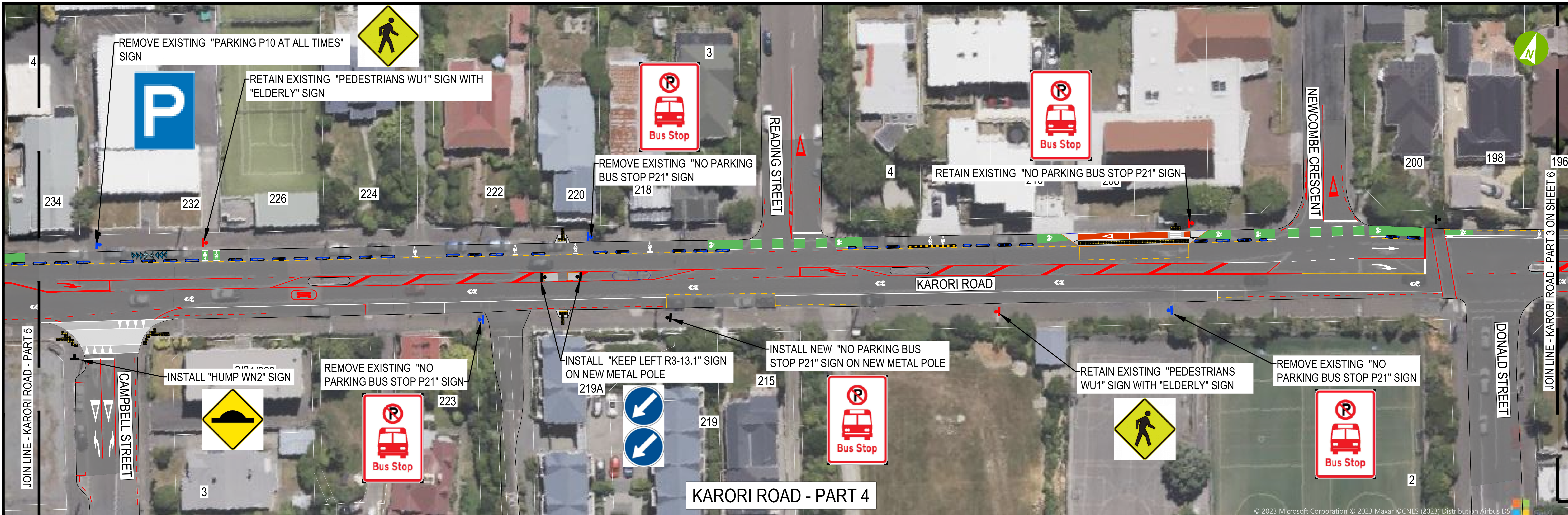
aurecon
www.aurecongroup.com

CLIENT
Absolutely Positively Wellington City Council
Me Heke Ki Poneke

REV	DATE	REVISION DETAILS	APPROVED
A	07/07/23	FOR DISCUSSION / REVIEW	G. MURISON
B	11/09/23	FOR DISCUSSION / REVIEW	G. MURISON
C	06/09/23	FOR DISCUSSION / REVIEW	G. MURISON

SCALE	SIZE	WORK IN PROGRESS
1:250	A0	APPROVED
DRAWN	DESIGNED	REVIEWED
W. HU	W. HU	M. COCKING

PROJECT	TITLE	PROJECT No.	AREA	ITC	DIC	NUMBER	REV
KARORI TO BOTANIC GARDEN KI PAKAKA CONNECTIONS WCC TRANSITIONAL CYCLEWAYS	SIGNAGE PRIMARY ROUTE - 90% DESIGN KARORI ROAD SHEET 6 (OF 9)	522550	0000	DRG	DGN	0101	C



KARORI ROAD - PART 4



KARORI ROAD - PART 5

LEGEND	
	NEW NO STOPPING LINES
	NEW ROAD MARKINGS
	EXISTING ROAD MARKINGS TO BE RETAINED
	CYCLEWAY SEPARATOR
	NEW KERBS
	REMOVED KERBS
	INTERLOCKING SPEED HUMP
	NEW SIGNAGE
	EXISTING SIGNAGE TO BE RETAINED
	SIGNAGE TO BE REMOVED

aurecon
www.aurecongroup.com

CLIENT
Absolutely Positively Wellington City Council
Me Heke Ki Pōneke

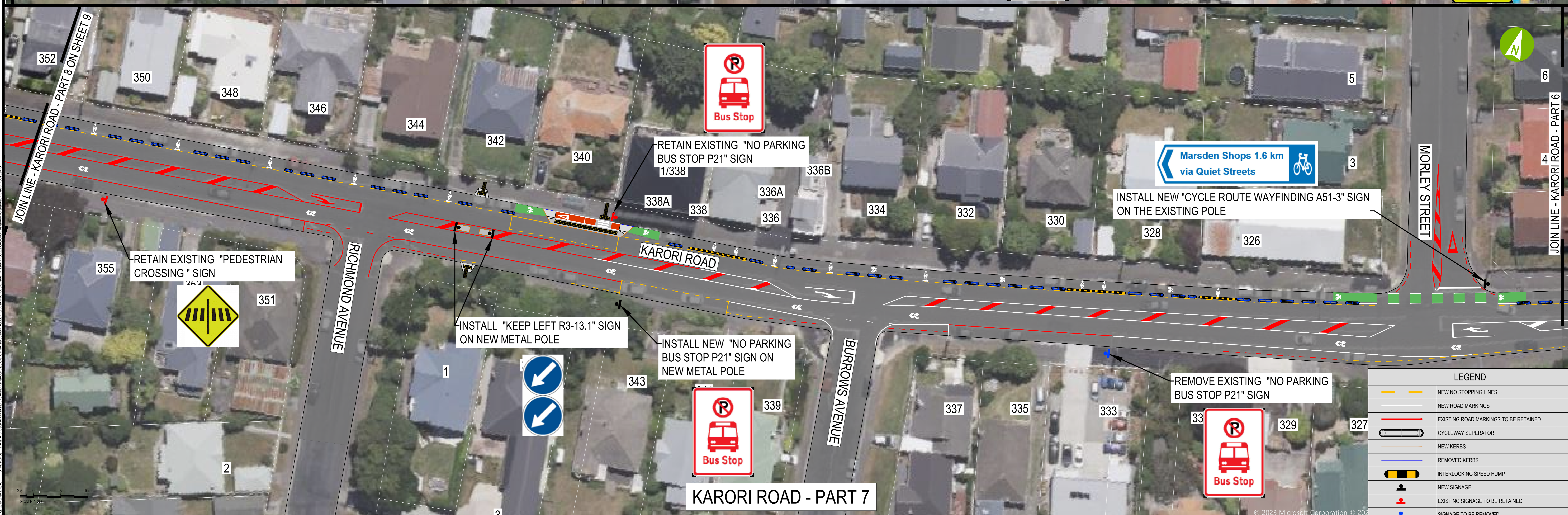
REV	DATE	REVISION DETAILS	APPROVED
A	07/07/23	FOR DISCUSSION / REVIEW	G. MURISON
B	11/08/23	FOR DISCUSSION / REVIEW	G. MURISON
C	06/09/23	FOR DISCUSSION / REVIEW	G. MURISON

SCALE	SIZE
1:250	A0

WORK IN PROGRESS	APPROVED
DATE	DATE

PROJECT	TITLE
KARORI TO BOTANIC GARDEN KI PĀEKAKA CONNECTIONS WCC TRANSITIONAL CYCLEWAYS	SIGNAGE PRIMARY ROUTE - 90% DESIGN KARORI ROAD SHEET 7 (OF 9)

DRAWING No.	PROJECT No.	AREA	TRC	DGC	NUMBER	REV
522550	0000	DRG	DGN	0101	C	



LEGEND	
	NEW NO STOPPING LINES
	NEW ROAD MARKINGS
	EXISTING ROAD MARKINGS TO BE RETAINED
	CYCLEWAY SEPERATOR
	NEW KERBS
	REMOVED KERBS
	INTERLOCKING SPEED HUMP
	NEW SIGNAGE
	EXISTING SIGNAGE TO BE RETAINED
	SIGNAGE TO BE REMOVED

aurecon
www.aurecongroup.com

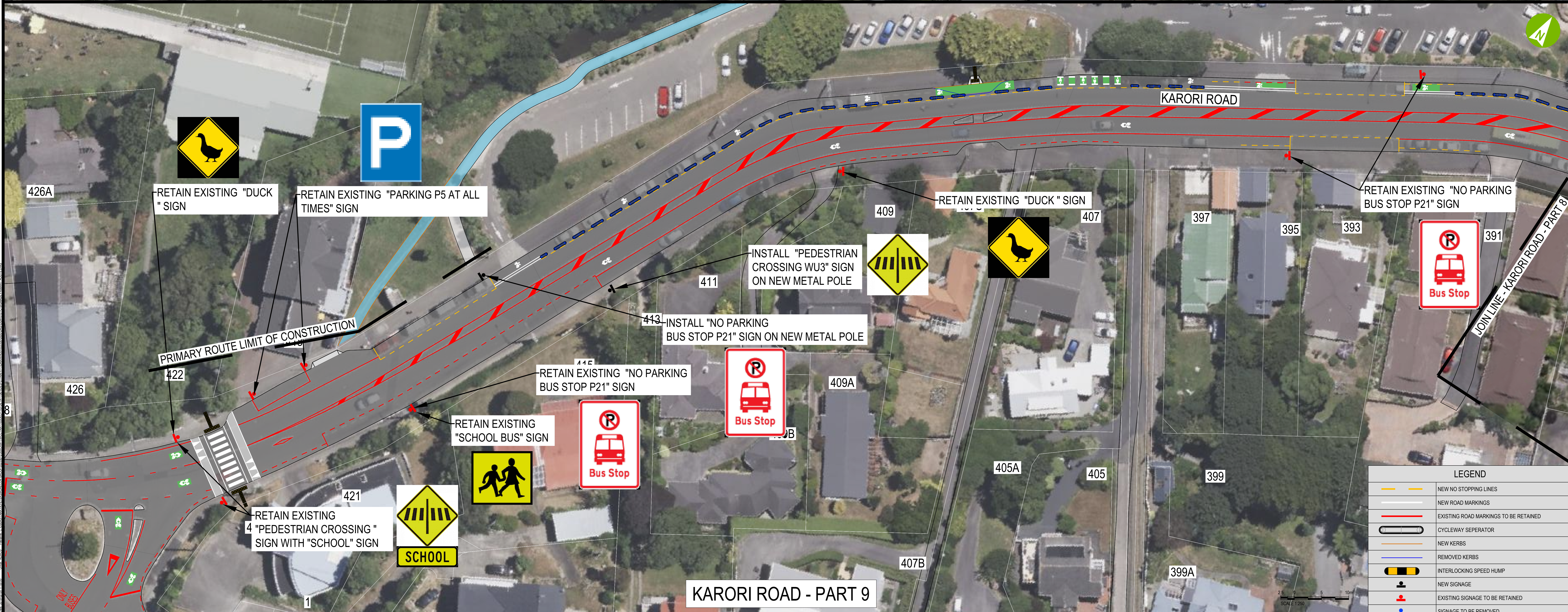
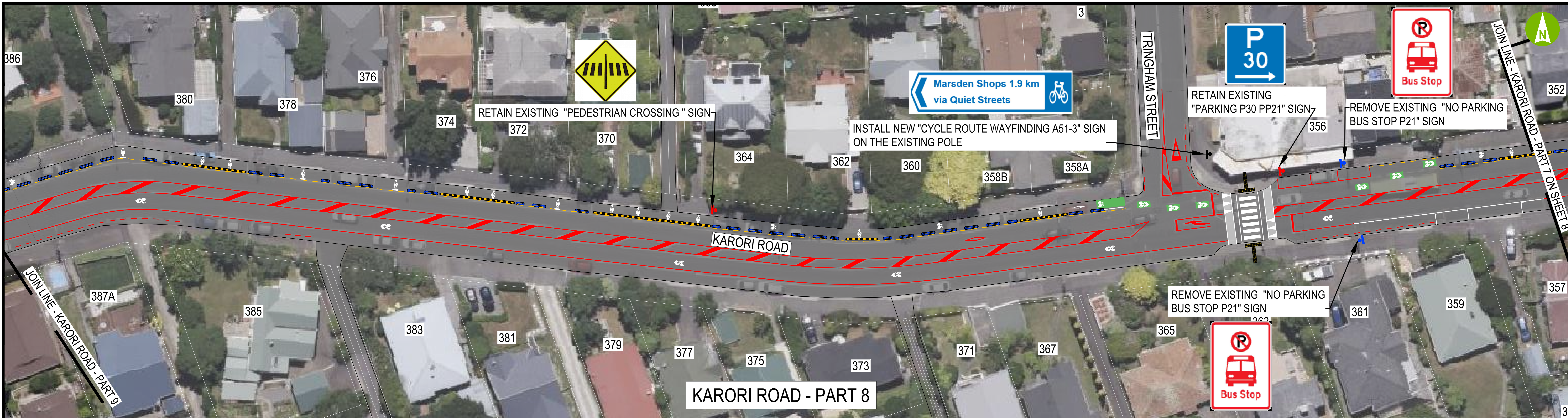
CLIENT
Absolutely Positively Wellington City Council
Me Heke Ki Poneke

REV	DATE	REVISION DETAILS	APPROVED
A	07/07/23	FOR DISCUSSION / REVIEW	G.MURISON
B	11/09/23	FOR DISCUSSION / REVIEW	G.MURISON
C	06/09/23	FOR DISCUSSION / REVIEW	G.MURISON

SCALE	SIZE
1:250	A0

WORK IN PROGRESS	PROJECT
APPROVED	KARORI TO BOTANIC GARDEN KI PAKAKA CONNECTIONS WCC TRANSITIONAL CYCLEWAYS
DATE	SIGNAGE PRIMARY ROUTE - 90% DESIGN
TITLE	KARORI ROAD
	SHEET 8 (OF 9)

DRAWING No.	PROJECT No.	AREA	TRC	DWG	NUMBER	REV
522550	0000	DRG	DGN	0101	C	



LEGEND	
	NEW NO STOPPING LINES
	NEW ROAD MARKINGS
	EXISTING ROAD MARKINGS TO BE RETAINED
	CYCLEWAY SEPARATOR
	NEW KERBS
	REMOVED KERBS
	INTERLOCKING SPEED HUMP
	NEW SIGNAGE
	EXISTING SIGNAGE TO BE RETAINED
	SIGNAGE TO BE REMOVED

aurecon
www.aurecongroup.com

CLIENT
Absolutely Positively Wellington City Council
Me Heke Ki Poneke

REV	DATE	REVISION DETAILS	APPROVED	SCALE	SIZE
A	07/07/23	FOR DISCUSSION / REVIEW	G. MURISON	1:250	A0
B	11/09/23	FOR DISCUSSION / REVIEW	G. MURISON		
C	06/09/23	FOR DISCUSSION / REVIEW	G. MURISON		

WORK IN PROGRESS	APPROVED
<input type="checkbox"/>	<input type="checkbox"/>

PROJECT	TITLE
KARORI TO BOTANIC GARDEN KAI PAKAKA CONNECTIONS WCC TRANSITIONAL CYCLEWAYS	SIGNAGE PRIMARY ROUTE - 90% DESIGN KARORI ROAD SHEET 9 (OF 9)

DRAWING No.	PROJECT No.	AREA	TRC	DGC	NUMBER	REV
522550	0000	DRG	DGN	0101	C	