



**NOTE:**

1. ALL EXISTING ROAD MARKINGS TO BE RETAINED MUST BE REMARKED IF THEY ARE FADED

LEGEND	
	NEW ROAD MARKINGS
	EXISTING ROAD MARKINGS TO BE RETAINED
	CYCLEWAY SEPARATOR
	NEW KERBS
	REMOVED KERBS



**aurecon**  
www.aurecongroup.com

CLIENT  
**Absolutely Positively Wellington City Council**  
Me Heke Ki Pōneke

REV	DATE	REVISION DETAILS	APPROVED	SCALE	SIZE
0	11/08/23	FOR CONSTRUCTION	G MURISON	1:250	A0

FOR CONSTRUCTION	APPROVED	DATE
	G MURISON	23/08/23

PROJECT	TITLE	PROJECT No.	AREA	ITC	DSC	NUMBER	REV
KARORI TO BOTANIC GARDEN KI PĀEKAKA CONNECTIONS WCC TRANSITIONAL CYCLEWAYS	GENERAL LAYOUT SECONDARY ROUTES KARORI PARK PATH & FERNLEA AVENUE / MARSHALL STREET SHEET 1 (OF 5)	522550	0000	DRG	DGN	0003	0



**MARSHALL STREET / RANELAGH STREET**



**RANELAGH STREET / DARWIN STREET**

**LEGEND**

	NEW ROAD MARKINGS
	EXISTING ROAD MARKINGS TO BE RETAINED
	CYCLEWAY SEPARATOR
	NEW KERBS
	REMOVED KERBS

**NOTE:**  
 1. ALL EXISTING ROAD MARKINGS TO BE RETAINED MUST BE REMARKED IF THEY ARE FADED



**aurecon**  
 www.aurecongroup.com

**Absolutely Positively**  
**Wellington City Council**  
 Me Heke Ki Pōneke

REV	DATE	REVISION DETAILS	APPROVED	SCALE	SIZE
0	11/08/23	FOR CONSTRUCTION	G MURISON	1:250	A0

APPROVED	DATE
G MURISON	23/08/23

PROJECT	TITLE	PROJECT No.	AREA	ITC	DWG	DGN	NUMBER	REV
KARORI TO BOTANIC GARDEN KI PĀEKAKA CONNECTIONS WCC TRANSITIONAL CYCLEWAYS	GENERAL LAYOUT SECONDARY ROUTES MARSHALL STREET / RANELAGH STREET / DARWIN STREET SHEET 2 (OF 5)	522550	0000	DRG	DGN	0003	0	



LEGEND	
	NEW ROAD MARKINGS
	EXISTING ROAD MARKINGS TO BE RETAINED
	CYCLEWAY SEPARATOR
	NEW KERBS
	REMOVED KERBS

**NOTE:**  
 1. ALL EXISTING ROAD MARKINGS TO BE RETAINED MUST BE REMARKED IF THEY ARE FADED

**aurecon**  
www.aurecongroup.com

CLIENT  
**Absolutely Positively Wellington City Council**  
 Me Heke Ki Pōneke

REV	DATE	REVISION DETAILS	APPROVED	SCALE	SIZE
0	11/08/23	FOR CONSTRUCTION	G MURISON	1:250	A0

APPROVED	DATE
G MURISON	23/08/23

PROJECT	TITLE	DRAWING No.	PROJECT No.	AREA	TIC	DIC	NUMBER	REV
KARORI TO BOTANIC GARDEN KI PAKAKA CONNECTIONS WCC TRANSITIONAL CYCLEWAYS	GENERAL LAYOUT SECONDARY ROUTES DARWIN STREET & SAMUEL PARNELL ROAD SHEET 3 (OF 5)		522550	0000	DRG	DGN	0003	0



FRIEND STREET - PART 1



FRIEND STREET - PART 2

**LEGEND**

	NEW ROAD MARKINGS
	EXISTING ROAD MARKINGS TO BE RETAINED
	CYCLEWAY SEPARATOR
	NEW KERBS
	REMOVED KERBS

**NOTE:**  
 1. ALL EXISTING ROAD MARKINGS TO BE RETAINED MUST BE REMARKED IF THEY ARE FADED



**Absolutely Positively Wellington City Council**  
 Me Heke Ki Pōneke

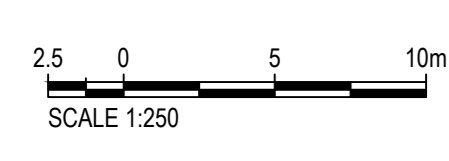
REV	DATE	REVISION DETAILS	APPROVED	SCALE	SIZE
0	11/08/23	FOR CONSTRUCTION	G MURISON	1:250	A0

APPROVED	DATE	TITLE
G MURISON	23/08/23	FRIEND STREET

PROJECT	TITLE	DRAWING No.	PROJECT No.	AREA	ITC	DRG	DGN	NUMBER	REV
KARORI TO BOTANIC GARDEN KI PĀEKAKA CONNECTIONS WCC TRANSITIONAL CYCLEWAYS	GENERAL LAYOUT SECONDARY ROUTES FRIEND STREET SHEET 4 (OF 5)	522550	0000	DRG	DGN	0003	0		



P:\DWG\_2015\2015\_08\_10\101518.DWG - 08/10/2015 - Project - CLIENT\GARDEN\KARORI\GENERAL\_LAYOUT\SECONDARY\_ROUTES.DWG  
 P:\DWG\_2015\2015\_08\_10\101518.DWG - 08/10/2015 - Project - CLIENT\GARDEN\KARORI\GENERAL\_LAYOUT\SECONDARY\_ROUTES.DWG



**NOTE:**  
 1. ALL EXISTING ROAD MARKINGS TO BE RETAINED MUST BE REMARKED IF THEY ARE FADED

LEGEND	
	NEW ROAD MARKINGS
	EXISTING ROAD MARKINGS TO BE RETAINED
	CYCLEWAY SEPERATOR
	NEW KERBS
	REMOVED KERBS



**CLIENT**  
 Absolutely Positively  
**Wellington City Council**  
 Me Heke Ki Poneke

REV	DATE	REVISION DETAILS	APPROVED
0	11/08/23	FOR CONSTRUCTION	G MURISON

SCALE	SIZE	FOR CONSTRUCTION
1:250	A0	FOR CONSTRUCTION
<b>DRAWN</b>	<b>APPROVED</b>	<b>DATE</b>
T PETERS	G MURISON	23/08/23
<b>DESIGNED</b>	<b>TITLE</b>	<b>DRAWING No.</b>
T PETERS		
<b>REVIEWED</b>	<b>PROJECT No.</b>	<b>AREA</b>
S HAMILTON	522550	0000
	<b>TTC</b>	<b>DCC</b>
	DRG	DGN
	<b>NUMBER</b>	<b>REV</b>
	0003	0

PROJECT		KARORI TO BOTANIC GARDEN KI PAEKAKA CONNECTIONS WCC TRANSITIONAL CYCLEWAYS			
TITLE		GENERAL LAYOUT SECONDARY ROUTES FRIEND STREET SHEET 5 (OF 5)			
<b>DRAWING No.</b>	522550	<b>AREA</b>	0000	<b>TTC</b>	DRG
<b>DCC</b>	DGN	<b>NUMBER</b>	0003	<b>REV</b>	0



LEGEND	
	NEW ROAD MARKINGS
	EXISTING ROAD MARKINGS TO BE RETAINED
	ROADMARKINGS TO BE REMOVED
	CYCLEWAY SEPARATOR
	NEW KERBS
	REMOVED KERBS
	NEW SIGNAGE
	SIGNAGE TO BE REMOVED

**aurecon**  
www.aurecongroup.com


CLIENT  
**Absolutely Positively Wellington City Council**  
Me Heke Ki Pōneke

REV	DATE	REVISION DETAILS	APPROVED	SCALE	SIZE
0	11/08/23	FOR CONSTRUCTION	G MURISON	1:250	A0

FOR CONSTRUCTION		PROJECT	
APPROVED	DATE	TITLE	
G MURISON	23/08/23	KARORI TO BOTANIC GARDEN KI PĀEKAKA CONNECTIONS WCC TRANSITIONAL CYCLEWAYS	
		SIGNAGE SECONDARY ROUTES KARORI PARK PATH & FERNLEA AVENUE / MARSHALL STREET SHEET 1 (OF 4)	
DRAWING No.	PROJECT No.	AREA	REV
	522550	0000	0
		DRG	DGN
		0103	



LEGEND	
	NEW ROAD MARKINGS
	EXISTING ROAD MARKINGS TO BE RETAINED
	ROADMARKINGS TO BE REMOVED
	CYCLEWAY SEPARATOR
	NEW KERBS
	REMOVED KERBS
	NEW SIGNAGE
	SIGNAGE TO BE REMOVED



**aurecon**  
www.aurecongroup.com

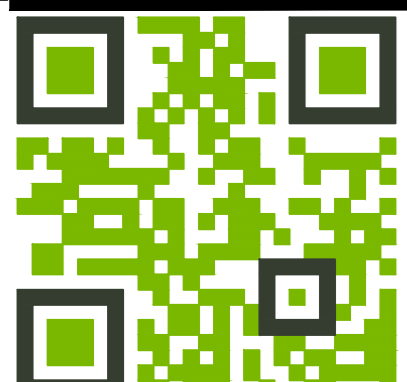
CLIENT

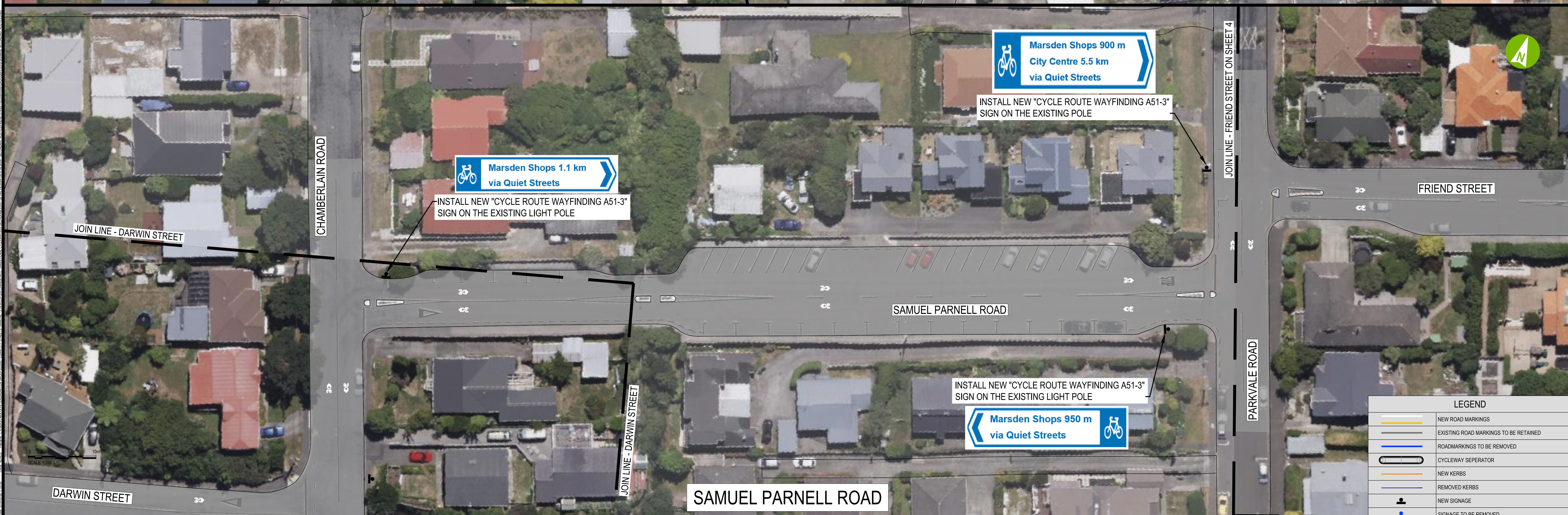
**Absolutely Positively Wellington City Council**  
Me Heke Ki Poneke

REV	DATE	REVISION DETAILS	APPROVED	SCALE	SIZE	FOR CONSTRUCTION
0	11/08/23	FOR CONSTRUCTION	G MURISON	1:250	A0	FOR CONSTRUCTION


APPROVED	DATE	TITLE
G MURISON	23/08/23	SIGNAGE SECONDARY ROUTES MARSHALL STREET / RANELAGH STREET / DARWIN STREET SHEET 2 (OF 4)

PROJECT	AREA	DTC	DGN	NUMBER	REV
KARORI TO BOTANIC GARDEN KI PAKAKA CONNECTIONS WCC TRANSITIONAL CYCLEWAYS	0000	DRG	DGN	0103	0





LEGEND	
	NEW ROAD MARKINGS
	EXISTING ROAD MARKINGS TO BE RETAINED
	ROADMARKINGS TO BE REMOVED
	CYCLEWAY SEPARATOR
	NEW KERBS
	REMOVED KERBS
	NEW SIGNAGE
	SIGNAGE TO BE REMOVED



**aurecon**  
www.aurecongroup.com

CLIENT  
**Absolutely Positively Wellington City Council**  
Me Heke Ki Pōneke

REV	DATE	REVISION DETAILS	APPROVED	SCALE	SIZE
0	11/08/23	FOR CONSTRUCTION	G MURISON	1:250	A0

FOR CONSTRUCTION

APPROVED	DATE
G MURISON	23/08/23

PROJECT	TITLE	PROJECT No.	AREA	ITC	DRG	DGN	NUMBER	REV
KARORI TO BOTANIC GARDEN KI PĀEKAKA CONNECTIONS WCC TRANSITIONAL CYCLEWAYS	SIGNAGE SECONDARY ROUTES DARWIN STREET & SAMUAL PARNELL ROAD SHEET 3 (OF 4)	522550	0000	DRG	DGN	0103	0	





2.5 0 5 10m  
SCALE 1:250

CLIENT

**absolutely positively**  
**Wellington City Council**  
Me Heke Ki Pōneke

REV 0 DATE 11/08/23 REVISION DETAILS FOR CONSTRUCTION APPROVED G MURISON

SCALE 1:250 SIZE A0

FOR CONSTRUCTION APPROVED DATE 23/08/23

PROJECT KARORI TO BOTANIC GARDEN KI PĀEKAKA CONNECTIONS WCC TRANSITIONAL CYCLEWAYS  
TITLE SIGNAGE SECONDARY ROUTES FRIEND STREET SHEET 4 (OF 4)

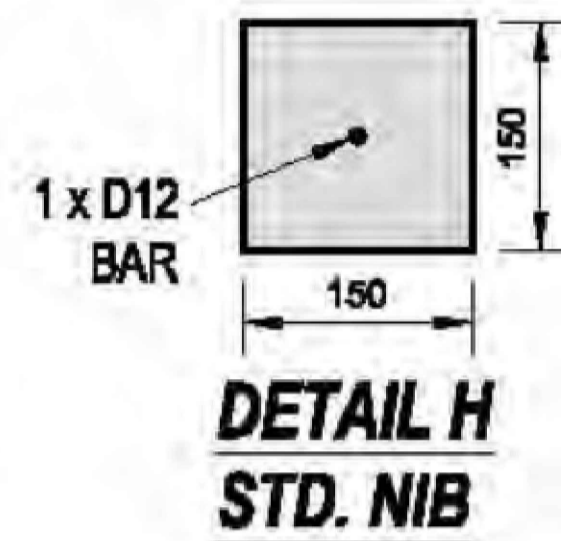
DRAWING No. 522550 AREA 0000 TITLE DRG DGN NUMBER 0103 REV 0

LEGEND	
	NEW ROAD MARKINGS
	EXISTING ROAD MARKINGS TO BE RETAINED
	ROADMARKINGS TO BE REMOVED
	CYCLEWAY SEPARATOR
	NEW KERBS
	REMOVED KERBS
	NEW SIGNAGE
	SIGNAGE TO BE REMOVED



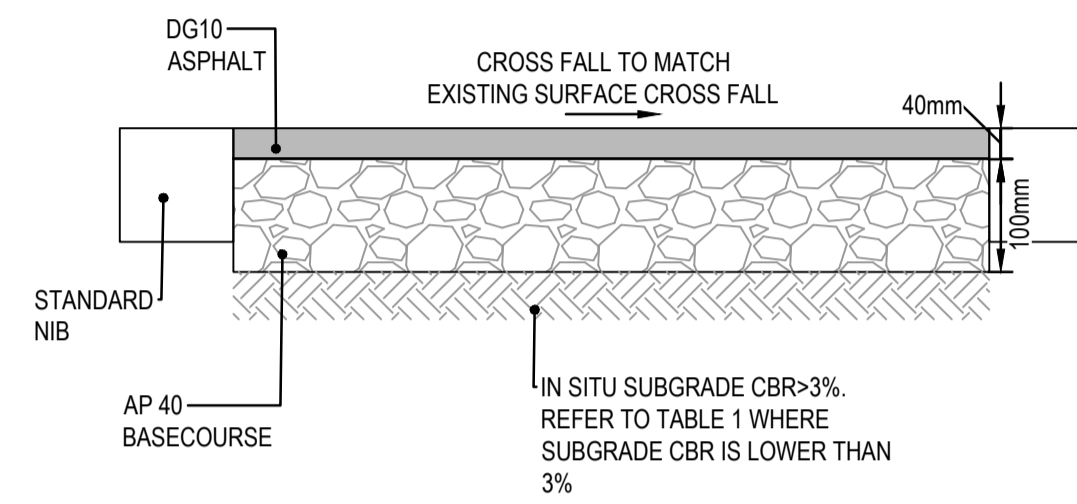
**NOTE:**

- STANDARD KERB SHALL BE LAID ON 300mm (MIN.) GAP65 SUBBASE IN ROADS AND 100mm GAP40 IN FOOTPATHS (WHERE SUBGRADE CBR>5). IF THE SUBGRADE CBR<5 THEN ROADS AND FOOTPATH MUST BE UNDERCUT AND BACKFILLED WITH FILLING MATERIALS.
- GRANULAR SUBGRADE IMPROVEMENT MATERIAL CAN BE GAP40, GAP65, OR ANY APPROPRIATE MATERIAL WITH CBR>5%. IMPROVEMENT LAYER SHALL BE COMPACTED IN LAYER(S), WITH LAYER THICKNESS BETWEEN 2.5 AND 4 TIMES OF THE NOMINAL AGGREGATE SIZE.

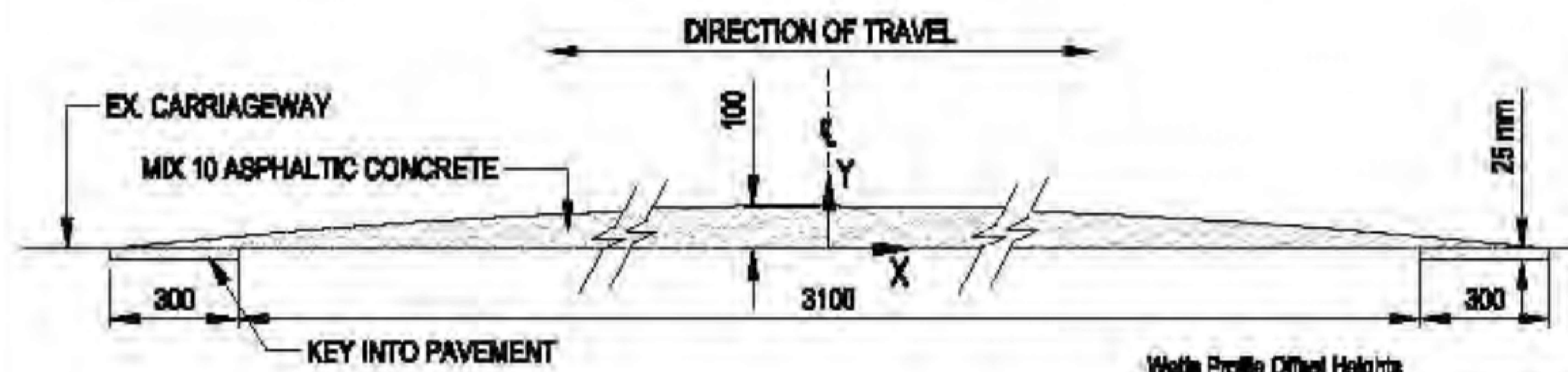


REFER TO PLAN NO. R-22-700 IN WCC CODE OF PRACTICE FOR LAND DEVELOPMENT FOR DETAILS

**A STANDARD NIB**  
SCALE 1:10



**B ASPHAL FOOTPATH PAVEMENT**  
SCALE 1:10



**WATTS PROFILE**

Watts Profile Critical Heights

X (m)	Y (mm)	X (m)	Y (mm)	X (m)	Y (mm)
0.0	100	0.7	86	1.4	63
0.1	90	0.8	81	1.5	54
0.2	88	0.9	79	1.6	44
0.3	87	1.0	71	1.7	36
0.4	86	1.1	66	1.8	28
0.5	85	1.2	58		
0.6	80	1.3	61		

REFER TO PLAN NO. R-45-702 IN WCC CODE OF PRACTICE FOR LAND DEVELOPMENT FOR DETAILS

**C WATTS PROFILE SPEED HUMP**  
SCALE 1:10

File name: C:\USERS\TARYN.PETERS\AURECON\GROUP\2259 - LOWM CITY STREETS TRANSITION - 3 DEVELOP\305 CHANGE\WCC TRANSITIONAL CYCLEWAYS\50 DELIVERABLES\7 DETAIL DESIGN\1004 DESIGN - SECONDARY ROUTES\SPREAD STREET\022559-0000-DRG-1004-000-TYPICAL DETAILS.DWG  
Plot Date: 2018/02/28 11:02:00  
Office Path:



**Absolutely Positively**  
**Wellington City Council**  
Me Heke Ki Pōneke

REV	DATE	REVISION DETAILS	APPROVED	SCALE	SIZE
0	11/08/23	FOR CONSTRUCTION	G MURISON	AS SHOWN	A1

<b>DRAWN</b>	T PETERS
<b>DESIGNED</b>	T PETERS
<b>REVIEWED</b>	S HAMILTON

**FOR CONSTRUCTION**

**APPROVED**

DATE  
23/08/23

G MURISON

<b>PROJECT</b>	KARORI TO BOTANIC GARDEN KI PAEKAKA CONNECTIONS WCC TRANSITIONAL CYCLEWAYS					
<b>TITLE</b>	KERBS, PAVEMENTS, WATTS SPEED HUMP TYPICAL DETAILS SECONDARY ROUTES					
<b>DRAWING No.</b>	PROJECT No.	AREA	TYPE	DISC	NUMBER	REV
	522550	0000	DRG	DGN	0601	0