

We are proposing a change in your area

Kia ora,

This leaflet is to let you know about a change we are proposing to make in your neighbourhood.

Proposal:

Reference	TR127-23 Berhampore to Newtown transitional bike, bus and pedestrian improvements. Proposed separated cycle lanes, painted cycle lanes, new raised pedestrian and dual crossings, bus platforms, safer speeds and parking changes.
Location – where we propose to make the change	Adelaide Road, Akatea Street, Colombo Street, Dawson Street, Duppa Street, Emmett Street, Herald Street, Luxford Street, Riddiford Street, Rintoul Street and The Parade
Why we are proposing the change	<ul style="list-style-type: none"> • The above streets are part of Paneke Pōneke, Wellington’s plan for a citywide bike network, which was approved by the Council in March 2022. • Implementing these street changes will support the strategic goals outlined in the Long-term Plan, the Regional Land Transport Plan and Te Atakura by increasing travel options, improving safety, supporting growth, and enabling a reduction in transport-generated carbon emissions. • This proposal will support more people to get to and from the community facilities, shops, schools, and recreational destinations in Berhampore, Newtown, and Island Bay by providing more transport options and a safer, more walkable network and local environment. • It will complete a 6.3km (25 minutes) safe cycling route from the south coast to the central city by connecting the Island Bay cycleway to the new bike lanes from Newtown to the waterfront. • The bus improvements, which include bus stop platforms, kerb build outs, and more space for buses to pull in and out at bus stops, will make it easier for passengers to board and alight at the bus stops and improve accessibility for those who need it. • We want to improve accessibility along the route. Relocating some bus stops and new pedestrian crossings will improve access to the sports grounds and facilities along Adelaide Road, the hospital and retirement village on Rintoul Street, and make it easier to cross the road between bus stops on the route. It will also improve bus efficiency and timetable reliability. • Better bus stop spacing and installing a passing area on Rintoul St will make it safer and easier for buses to travel this stretch. • New pedestrian crossings, raised pedestrian crossings, traffic calming measures and safer speeds will make Newtown and Berhampore more attractive places to walk locally, particularly for children, seniors, and mobility impaired pedestrians. • This proposal will make it safer and easier for our rangatahi to get to and from school using active modes of transport. South Wellington Intermediate School and Berhampore Primary School are on the route and young people from Berhampore and Island Bay can also travel to Wellington East Girls’ College, Wellington High School, Wellington College and Queen Margaret

College in the city. In 2018 there were 1300 intermediate and college age students¹ living within 2-3 blocks either side of the route and housing in these areas is set to intensify.

What we'd like to do

RIDDIFORD STREET

- Extend the separated bike lane on the eastern side of the road southbound to the Rintoul Street intersection. This will replace three P60/P10 drop-off parking spaces and three P30 parking spaces
- Create a shared bus and bike lane on the western side of the street for northbound buses and bikes.
- Remove four P5 parking spaces on the western side of Riddiford Street and create one off peak loading zone at the southern end.
- Relocate Bus Stop #7018 6 metres south to increase the merge length for vehicles turning left into Hall Street crossing the bus and bike lane.

RINTOUL STREET

- Install a southbound separated uphill bike lane on the east side of Rintoul Street from Riddiford Street to the top of the hill outside Wakefield Hospital. This will remove approximately 68 unrestricted parking spaces.
- Install a northbound separated bike lane from Luxford Street towards Rintoul Street to the top of the hill outside Wakefield Hospital. This will remove approximately 27 unrestricted parking spaces.
- Add a new raised pedestrian crossing at the crest of the hill between bus stops #6121 and #7121.
- Add a new raised pedestrian crossing at the Luxford Street intersection.
- Raise the existing pedestrian crossing outside South Wellington Intermediate School.
- Relocate Bus Stop #7121 (Rintoul Street opposite Wakefield Hospital) approximately 48 metres south to align with the new raised pedestrian crossing and provide additional on-street parking.
- Relocate Bus Stop #7122 (Rintoul Street at Te Wharepōuri Street) approximately 6 metres north to provide a full height kerb for bus passengers alighting and boarding.
- Relocate Bus Stop 6123 (Rintoul Street near 91) approximately 12m north to provide a full height kerb for passengers alighting from the bus doors and be closer to the signalised crossing at Te Wharepōuri Street.
- Add no-stopping lines on either side of all bus stops to provide a 9.0 m exit taper and 15.0 m entry taper for efficient bus operation and to allow buses to pull up to the kerb.
- Remove the two parking spaces on the west side in the intersection with Riddiford Street to improve the intersection safety and operation.
- Remove one parking space outside no.104 Rintoul Street to improve sightlines and passing opportunity for buses.
- Remove one parking space north of the exit from South Wellington Intermediate School to improve sightlines for exiting vehicles.

¹ 2018 Census data – Berhampore, Island Bay, Newtown

- Replace two P15 parking spaces and two P60 parking spaces on the west side between Colombo Street and Riddiford Street with one P90 parking spaces, three P15 parking spaces and one loading zone.
- Remove one P5 parking space outside no.201 Rintoul Street. Relocate two P10 parking spaces and one P30 parking space from outside nos.195 to 201 Rintoul Street approximately 20 metres north to improve safety and bus movements at the Luxford Street and Rintoul Street intersection, and enhanced visibility to the new raised pedestrian crossing across the southern leg of Rintoul Street. Change the one P30 parking space to P60 to better meet local business needs.
- Replace three unrestricted parking spaces outside no.211 Rintoul Street with two P10 parking spaces and one P120 for nearby businesses.
- Remove two unrestricted parking spaces outside nos.224 and 226 Rintoul Street to improve forward visibility to the new raised pedestrian crossing.
- Replace two unrestricted parking spaces outside no.179 Rintoul St with two P120 parking spaces.
- Remove four unrestricted parking spaces outside no.181 Rintoul St to improve bus access to the bus stop.

LUXFORD STREET

- Convert ten unrestricted parking spaces and one P10 parking space on the south side of Luxford Street to seven parking spaces from nos.7 to 19. Under the Newtown Parking Management plan these are proposed to be Residents/P120 parking spaces.
- Remove eight unrestricted parking spaces from the south side of Luxford Street from nos.19 to 31.
- Convert eleven unrestricted parking spaces on the north side of Luxford Street to seven parking spaces from nos.20 to 28. Under the Newtown Parking Management plan these are proposed to be Residents/P120 parking spaces.
- Remove seven unrestricted parking spaces on the north side of Luxford Street nos.8 to 16.
- Remove Bus Stop #7123 (Luxford Street at Rintoul Street)
- Combine Bus Stops #7124 (Luxford Street at Berhampore Shops) and #7424 (Berhampore Shops – Adelaide Road) and relocate to outside nos.460 to 464 Adelaide Road.
- Install separated bike lanes on both sides of the road from Adelaide Road to Rintoul Street

ADELAIDE ROAD

Britomart Street to Luxford Street

- Combine Bus Stops #7424 (Berhampore Shops – Adelaide Road), #7124 (36 Luxford Street at Berhampore Shops) and #7125 (near no.500 Adelaide Road) and relocate to outside nos.460 to 464 Adelaide Road.
- Replace two P60 parking spaces between Luxford Street and Herald Street with a P30 Loading Zone 8am-6pm.
- Add two off-peak P60 parking spaces in the former location of Bus Stop #7124 (Berhampore Shops – outside no.450 Adelaide Road)

- Replace four clearway/off peak parking spaces outside nos.464 to 468 Adelaide Road with one off peak P30 loading zone 9.30am-3pm.
- Install a southbound separated bike lane on the east side of the road between Chilka Street and no.559 Adelaide Road. This will remove approximately 42 unrestricted parking spaces.
- Install approximately 80 metres of southbound separated bike lane from Dover Street to Dee Street. This will remove approximately 7 unrestricted parking spaces. We have added seven new parking spaces in the bus turnaround bay at the corner of Dover Street.
- Replace one unrestricted parking space with a P5 Pick up and Drop Off parking space adjacent to the raised zebra pedestrian crossing outside Wakefield Park.
- Install a northbound separated bike lane between Wakefield Park and Britomart Street. This will replace approximately 23 parking spaces.
- Install a northbound separated bike lane between Dee Street and the top of Wakefield Park. This will reduce parking by approximately 10 spaces as a parking lane is still retained between the traffic lane and the cycle lane.
- Relocate Bus Stop #6125 (Adelaide Road near no.493) approximately 10m north to avoid the drop kerb at an adjacent driveway and better align with the bus shelter.
- Raise the existing pedestrian zebra crossing at Chilka Street (no.514 Adelaide Rd)
- Add a new raised pedestrian zebra crossing between Duppa Street steps and Lavaud Street steps (adjacent to no.542 Adelaide Rd).
- Relocate Bus Stop #7126 (Adelaide Road at Duppa Street) approximately 16m north to accommodate the new raised pedestrian zebra crossing
- Combine Bus Stops# 6126 (Adelaide Road at Dawson Street) and #6127 (Adelaide Road near no.559) to a new location at Lavaud Street adjacent to the new raised pedestrian crossing
- Raise the existing pedestrian zebra crossing outside Wakefield Park
- Relocate Bus Stops #7128 (Adelaide Road at Wakefield Park) and #6128 (Adelaide Road at Dover Street) approximately 140m north to be next to the raised pedestrian zebra crossing
- Add kerb ramps and 16m of shared path for cyclists to enter the Berhampore Primary School accessway at no.494 Adelaide Road
- Create a shared path outside nos.546-558 Adelaide Rd.

AKATEA STREET

- Add a give way control for eastbound traffic approaching Adelaide Road

COLOMBO STREET

- Add a stop control for eastbound traffic approaching Rintoul Street

DAWSON STREET

- Add a give way control for westbound traffic approaching Adelaide Road

	<p>DUPPA STREET</p> <ul style="list-style-type: none"> • Add a give way control for eastbound traffic approaching Adelaide Road <p>EMMETT STREET</p> <ul style="list-style-type: none"> • Replace two P60 parking spaces near Riddiford Street with one P10 parking space and one Loading Zone <p>HERALD STREET</p> <ul style="list-style-type: none"> • Replace five unrestricted parking spaces near Adelaide Road with five P60 parking spaces for access to local businesses. <p>THE PARADE</p> <ul style="list-style-type: none"> • Install approximately 70m of southbound separated cycleway between Dover Street and no.9 The Parade. This will replace approximately eleven kerbside parks with two roadside parks between the cycleway and the traffic lane. • Install kerb buildouts and a pedestrian refuge across The Parade on the north side of Dee Street. • Relocate Bus Stop #7129 (The Parade near no.36) approximately 4m north to accommodate the new pedestrian refuge. • Install approximately 110m of northbound separated cycleway between Dee Street and Adelaide Road. This will remove six park spaces and replace them with two park spaces between the cycleway and the traffic lane.
<p>Impact</p>	<ul style="list-style-type: none"> • The overall impact on pedestrians and people with disabilities is positive with improved safety and accessibility due to six new raised crossings and safer speeds. New bike lanes will reduce the number of people cycling or scooting on the footpath. • The impact on people driving will be improved safety. Safer speeds and some turning restrictions may result in slightly longer vehicle travel times for a small number of trips, but this is expected to be minor. New raised platforms will reduce operating speeds at specific locations and may cause an inconvenience for general traffic and freight. • Uphill bike lanes reduce inconvenience and stress for general traffic and freight as the general traffic will not have to wait behind slower moving people on bikes or make overtaking decisions. • The impact on people cycling/scooting or wanting to cycle/scoot will be safer and more attractive routes through Newtown and Berhampore and greater connectivity between existing infrastructure. • The general impact on public transport users will be improved access to bus stops and improved efficiency for buses, which currently have difficulty accessing some stops and stop too frequently along Adelaide Rd. • There are isolated negative impacts on bus passengers boarding or alighting at three bus stops where the bike lane occupies part of the bus platform to minimise conflict between people on bikes and motor vehicles. The raised crossings on the route may impact bus passenger comfort on this section of the route however they have been designed to bus friendly specifications. • Net parking impact:

	<ul style="list-style-type: none"> ○ Removal of 95 unrestricted parking spaces in Rintoul Street ○ Removal of 22 unrestricted parking spaces in Luxford Street. ○ Removal of 87 unrestricted parking spaces in Adelaide Road (23 of these Adelaide Rd on-street spaces are in the Wakefield Park area. Further off-street parking in Dover Street and the top carpark at Wakefield Park is being investigated to mitigate this loss of parking.) ○ The remaining unrestricted parking spaces on the route will be subject to the new Berhampore Newtown parking scheme restrictions. ○ Time restricted parks for shoppers will have the times changed depending on where they are located and the nature of the local businesses. Some of these have been relocated into side streets. ○ Add loading zones in Emmett Street and Adelaide Road in the town centre. ○ Expanded and improved bike parking at Wakefield Park and the Newtown Community Centre <ul style="list-style-type: none"> ● A significant number of off-street parking spaces remain for both private and public use in the area. The proposed Berhampore Newtown Parking Scheme is being consulted on alongside this project and would be implemented alongside this project to mitigate the impacts of the parking space removal and better manage parking in the area. The plan would introduce a new parking scheme designed to prioritise residents and visitors to the area and reduce pressure from commuter parking. ● There will be some positive impact on parking revenue as unrestricted parking will be changed to residents parking and P120 time restricted parking under the Berhampore Newtown Parking Scheme. ● The impact on businesses on Rintoul Street, Luxford Street and Adelaide Road will be a reduction of on-street parking spaces directly outside their premises, some parking will be re-allocated to side streets and improved access by foot, bus and bike for customers. Time restricted parking has been added in several locations to improve access to local businesses and activities. ● The team are investigating designs to increase off-street parking at Wakefield Park and in Dover Street to mitigate the parking loss and reallocation in that section of the route.
<p>How this relates to the parking policy</p>	<ul style="list-style-type: none"> ● Support shift in type of transport used – facilitate a shift to using active (eg, walking and cycling) and public transport through parking. management and pricing, to move more people driving fewer vehicles. ● Support safe movement – facilitate the safe and efficient movement of people and goods by focusing on people moving along transport corridors rather than people parking or storing stationary vehicles. ● Support business wellbeing – ensure parking management and pricing controls support economic activity in suburban centres. ● Support move to becoming an eco-city – facilitate the uptake of car sharing, electric vehicles and other transport with low carbon emissions. Manage parking and incentivise a decrease in vehicle use to contribute to reduced carbon emissions, better water quality, air quality, stormwater management and biodiversity outcomes.

We are proposing a change in your area

Additional Information	<ul style="list-style-type: none">• This Berhampore to Newtown transitional project is a key initiative to deliver on several strategic plans for the city, including the Long-term Plan, Te Atakura (Climate Action Plan) and Paneke Pōneke (Wellington Bike Network Plan).• The bike network improvements are implemented using low cost adaptable materials that can be amended based on public feedback, and data, once these initial installations are in place.• Designs were developed by technical experts and with input from the community. A technical working group helped to ensure the project objectives were met without compromising road safety, within the constrained road corridors.• Average daily traffic (AADT) count:<ul style="list-style-type: none">○ 17,700 on Riddiford Street (6% heavy)○ 3600 on Rintoul Street from Riddiford Street to Wakefield Hospital (6% heavy)○ 8300 on Rintoul Street from Wakefield Hospital to Luxford Street (6% heavy)○ 8200 on Luxford Street (4% heavy)○ 15200 on Adelaide Road between Luxford Street and Britomart Street (3% heavy)○ 13300 on Adelaide Road between Britomart Street and Dee Street (5% heavy).• It is proposed that these changes will be complemented by extending the start of the reduced speed limit area (30km/h) in Berhampore from Luxford Street around to southern Rintoul Street in response to community feedback. These speed reductions are being consulted on at the same time as this Traffic Resolution but will follow the alternative method for setting speed limits outlined in the Setting the Speed Limit Rule 2022. Submissions received on the speed limit change will be considered by Council before a final decision by the Director of Land Transport, Waka Kotahi is made on the proposed speed limit change.• Two raised pedestrian crossings and some intersection improvements are part of Let's Get Wellington Moving's Targeted Improvements package that was approved by the Council in May 2022.• To view the legal description for this Traffic Resolution, an electronic copy of the report will be available on the Council's website from 9.00am Tuesday 12 September 2023 at https://www.transportprojects.org.nz/current/berhampore-to-newtown or you can call (04) 499 4444 and we will send one out to you.
Feedback	<ul style="list-style-type: none">• If you would like to provide us with specific feedback, which will be added to the Traffic Resolution following consultation and made public in full, you can do so by filling out an online submission form, downloading a printable submission form on https://www.transportprojects.org.nz/current/berhampore-to-newtown or emailing us at newtownberhampore@wcc.govt.nz

We are proposing a change in your area

Please note if you are giving feedback the consultation period opens at 9am Tuesday 12 September 2023 and finishes at 5pm Sunday 8 October 2023.

- What we do with your personal information:
All submissions (**including your name**, but not contact details) are provided **in their entirety** to elected members and made available to the public on our website and at our office. Personal information (including contact details) will also be used for the administration of the consultation process including informing you of the outcome of the consultation. All information collected will be held by Wellington City Council, 113 The Terrace, Wellington, with submitters having the right to access and correct personal information.

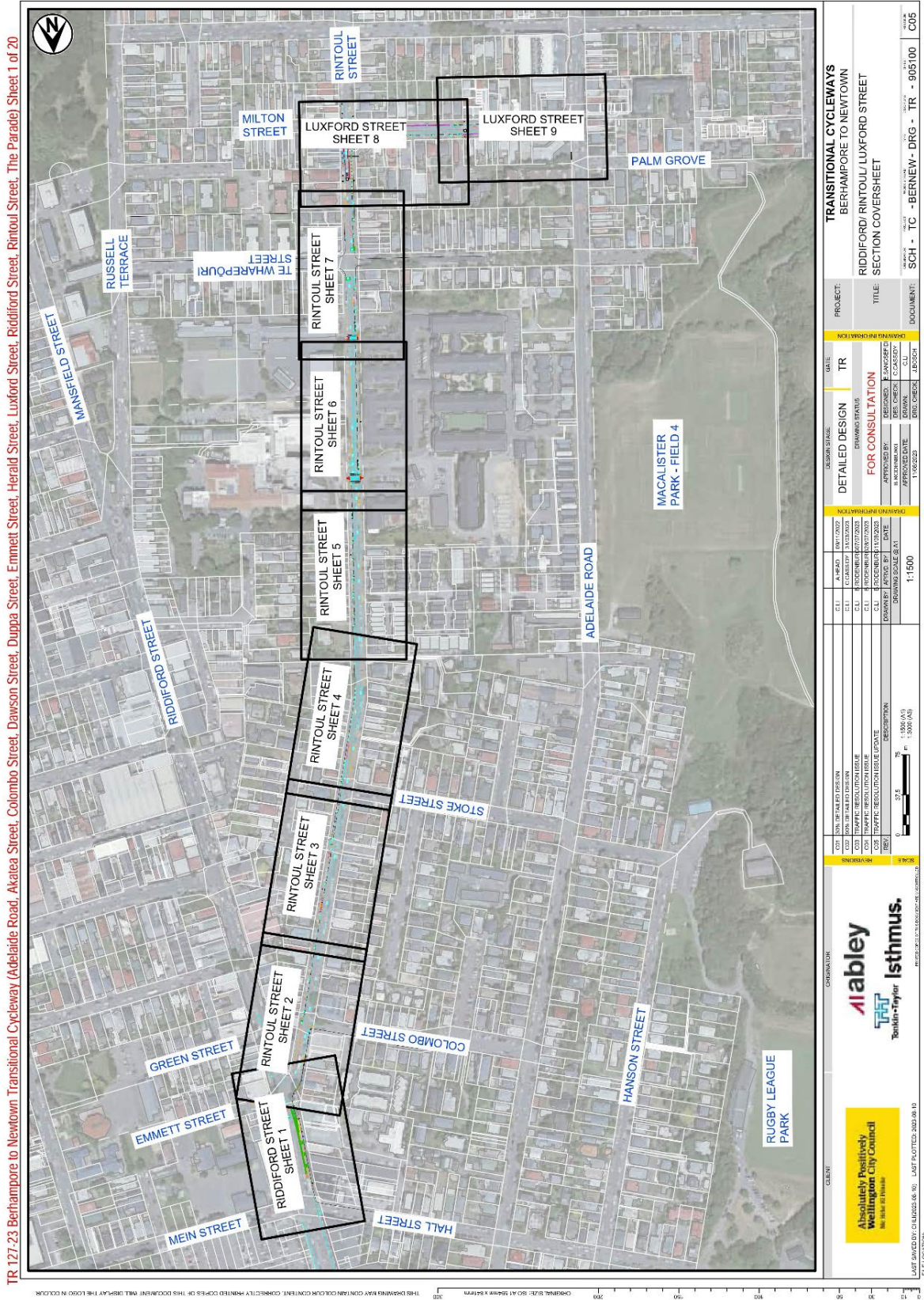
Next Steps

1. Feedback collated by Wednesday 29 November 2023.
2. The proposal will go to a Council meeting in December.
3. If approved, the proposal will commence installation within the following three months.

We are proposing a change in your area

Absolutely Positively
Wellington City Council
Me Heke Ki Pōneke

Traffic Resolution Plan: TR127-23 Berhampore to Newtown Transitional Cycleway



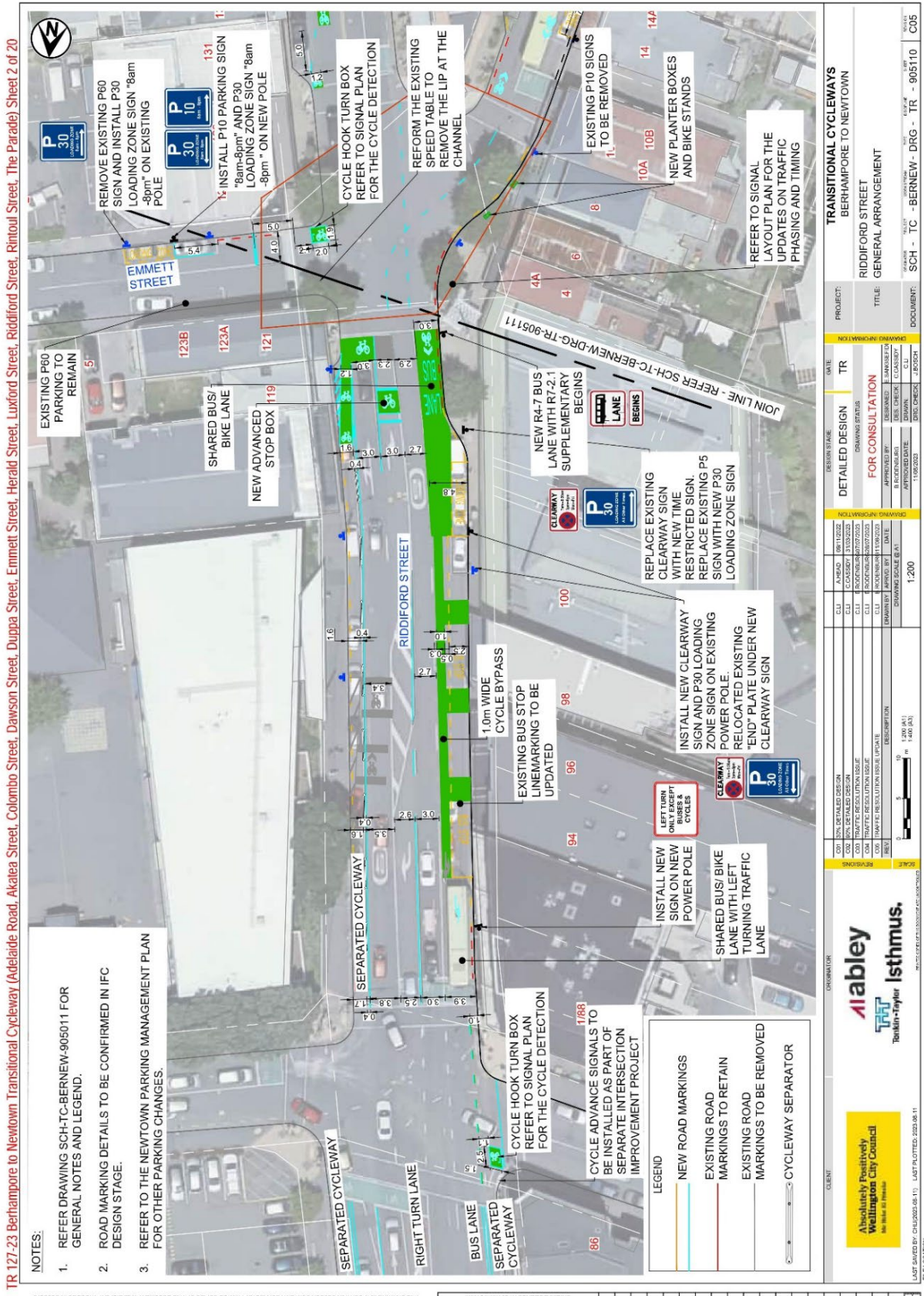
TR 127-23 Berhampore to Newtown Transitional Cycleway (Adelaide Road, Akatea Street, Colombo Street, Dawson Street, Duppa Street, Emmett Street, Riddiford Street, Luxford Street, Herald Street, Rintoul Street, Rintoul Street, The Parade) Sheet 1 of 20

CLIENT: Wellington City Council Me Heke Ki Pōneke		PROJECT: TRANSITIONAL CYCLEWAYS BERHAMPORE TO NEWTOWN		TITLE: RIDDIFORD/RINTOUL/LUXFORD STREET SECTION COVERSHEET		DOCUMENT: SCH - TC - BERNEW- DRG - TR - 005100 DATE: 01/11/2023	
SCALE: 1:1500 DATE: 01/11/2023		DESIGN STAGE: DETAILED DESIGN DIMMING STATUS: FOR CONSULTATION		QUOTE: TR		PROJECT: TRANSITIONAL CYCLEWAYS BERHAMPORE TO NEWTOWN	
APPROVED DATE: 11/06/2023 APPROVED BY: [Signature]		APPROVED DATE: 11/06/2023 APPROVED BY: [Signature]		DESIGNED BY: [Signature]		CHECKED BY: [Signature]	

We are proposing a change in your area

Absolutely Positively
Wellington City Council

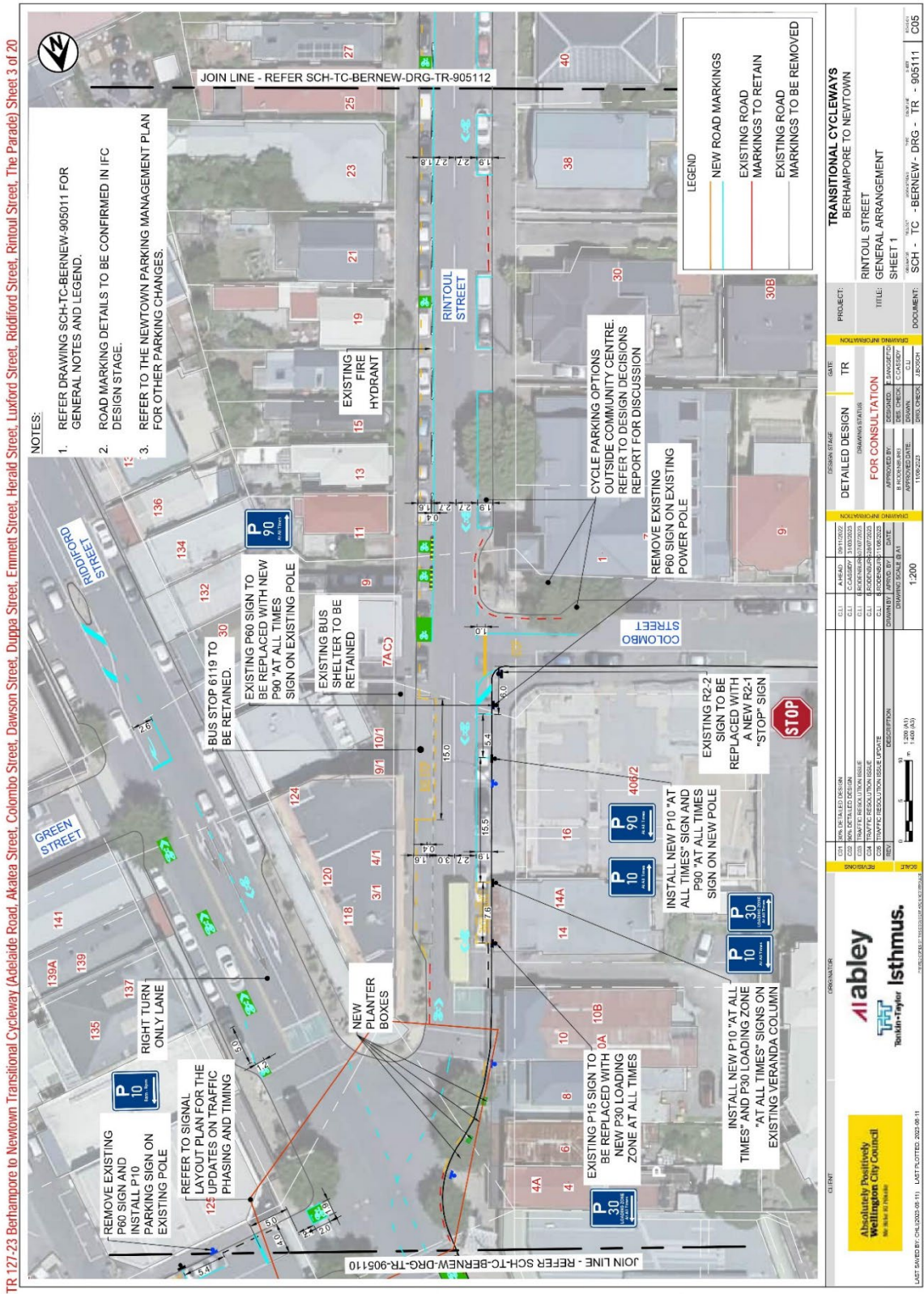
Me Heke Ki Pōneke



We are proposing a change in your area

Absolutely Positively
Wellington City Council

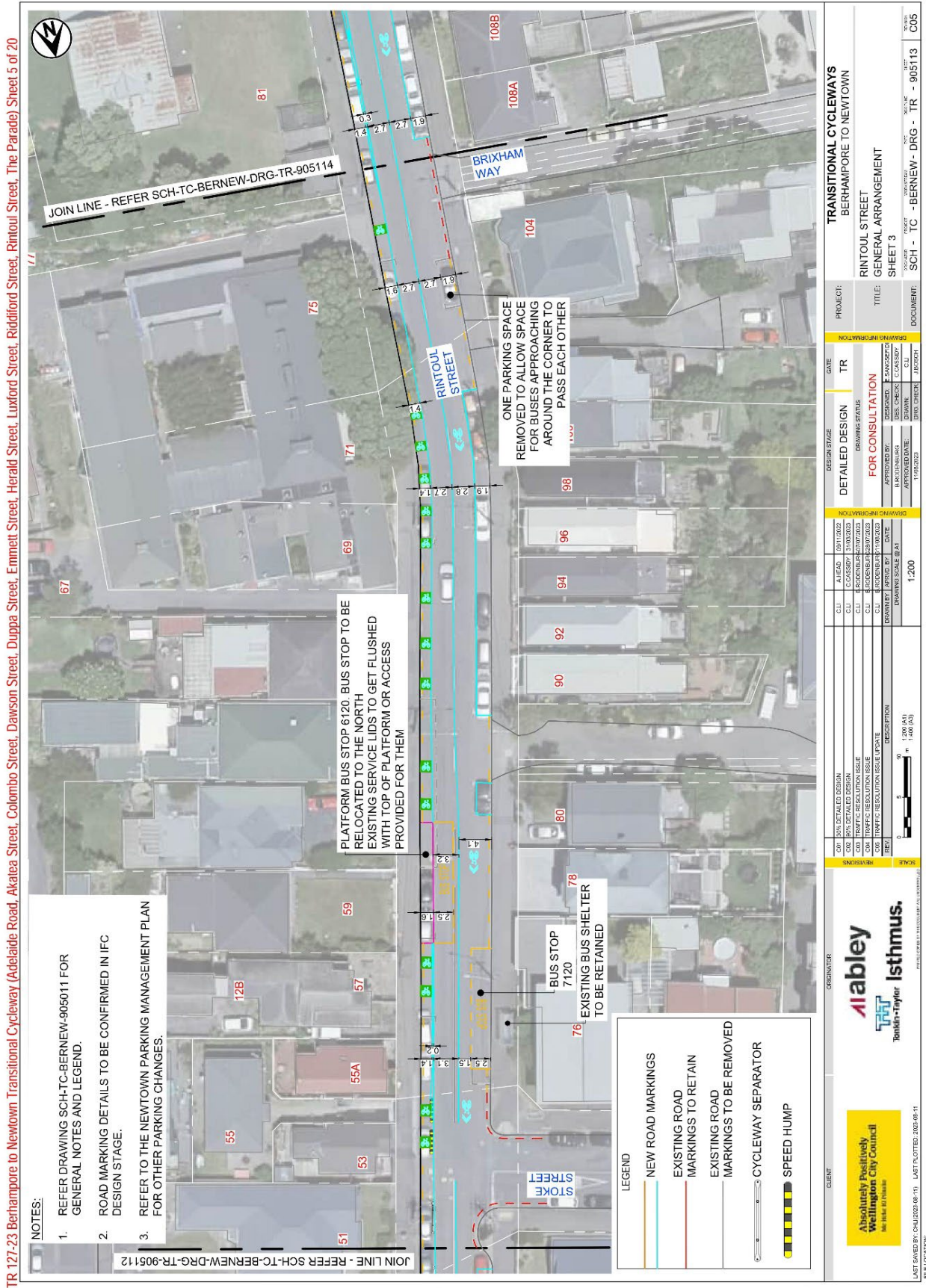
Me Heke Ki Pōneke



We are proposing a change in your area

Absolutely Positively
Wellington City Council

Me Heke Ki Pōneke



NOTES:

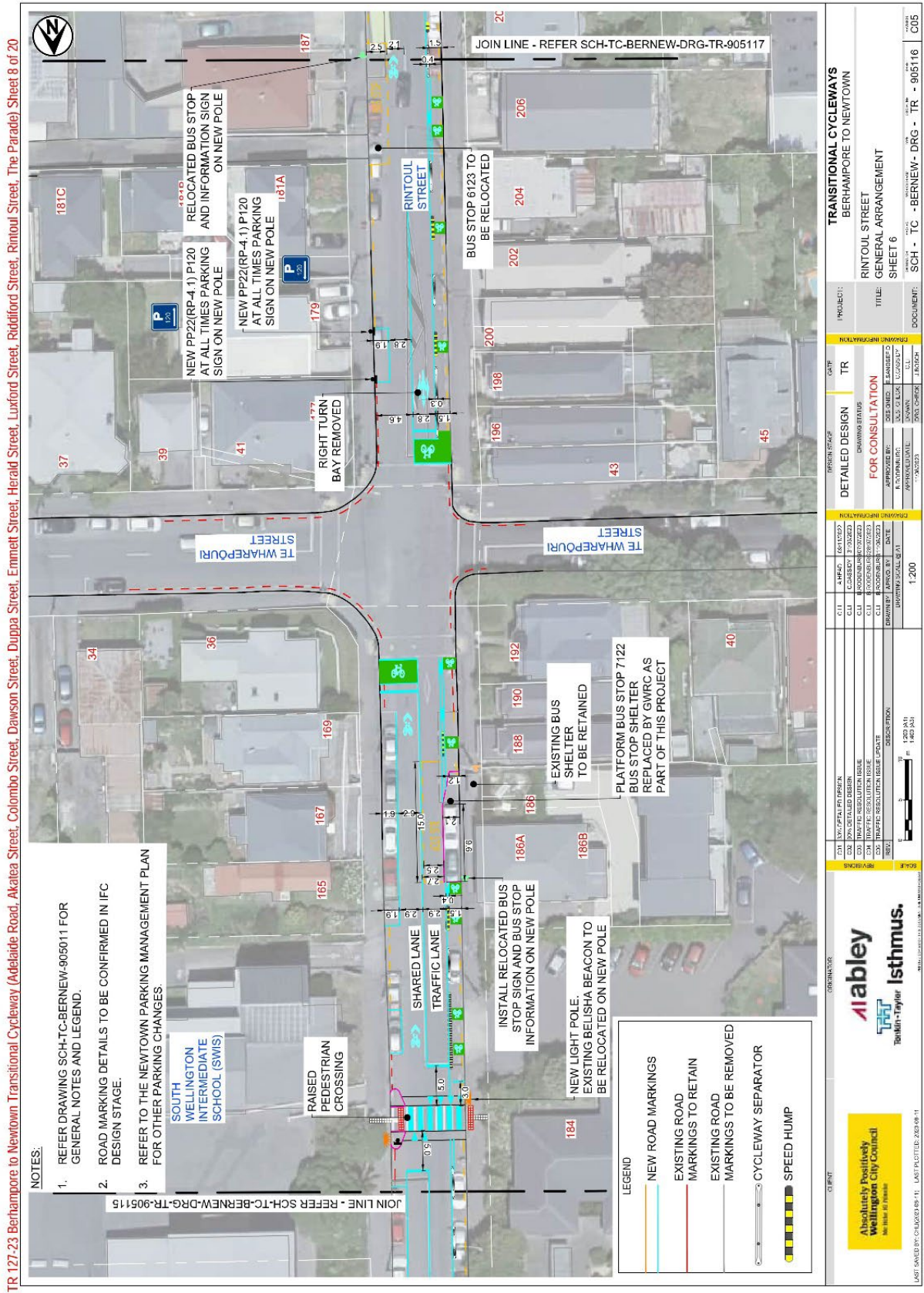
1. REFER DRAWING SCH-TC-BERNEW-905011 FOR GENERAL NOTES AND LEGEND.
2. ROAD MARKING DETAILS TO BE CONFIRMED IN IFC DESIGN STAGE.
3. REFER TO THE NEWTOWN PARKING MANAGEMENT PLAN FOR OTHER PARKING CHANGES.

TR 127-223 Berhampore to Newtown Transitional Cycleway (Adelaide Road, Akatea Street, Colombo Street, Dawson Street, Duppa Street, Emmett Street, Herald Street, Luxford Street, Riddiford Street, Rintoul Street, The Parade) Sheet 5 of 20

We are proposing a change in your area

Absolutely Positively
Wellington City Council

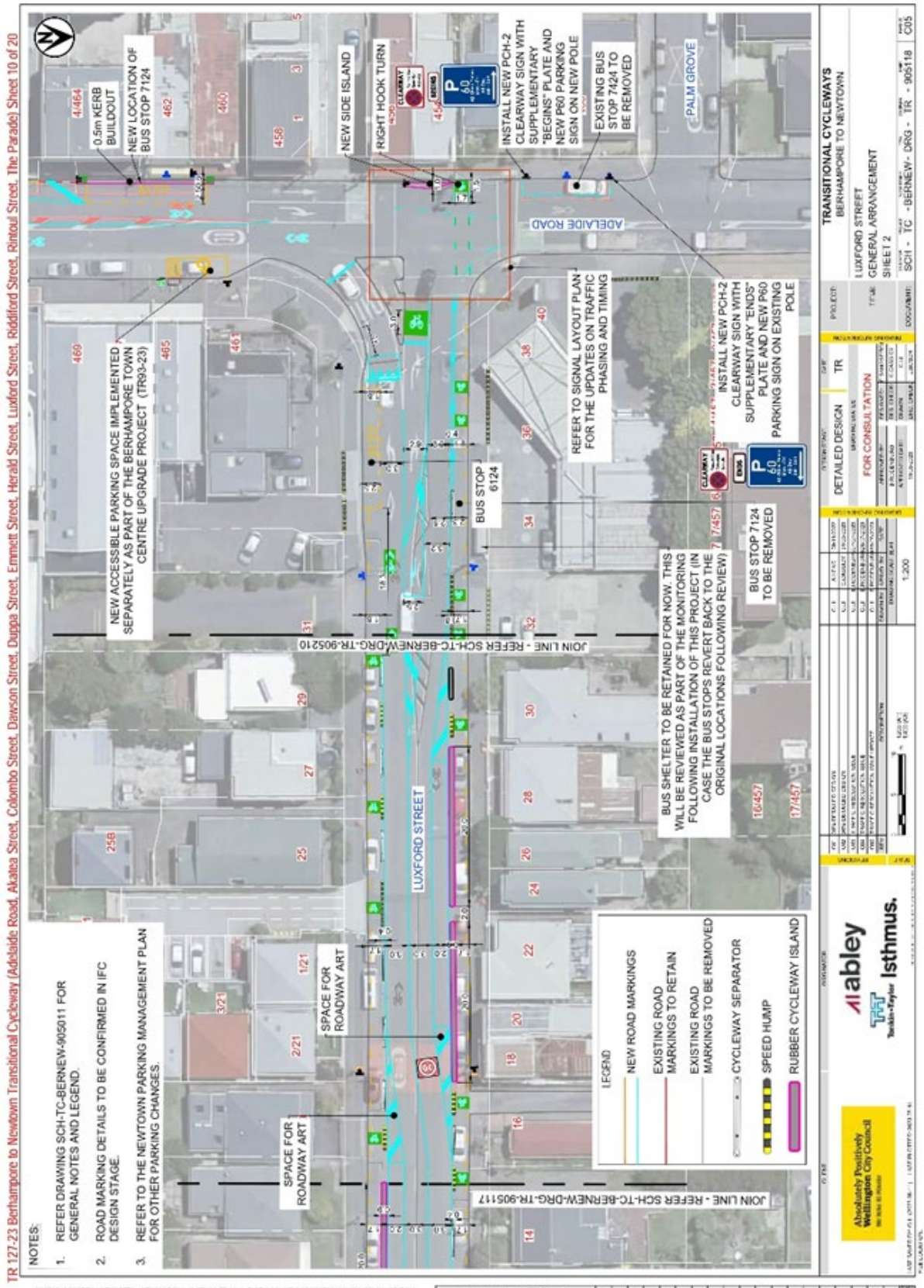
Me Heke Ki Pōneke



We are proposing a change in your area

Absolutely Positively
Wellington City Council

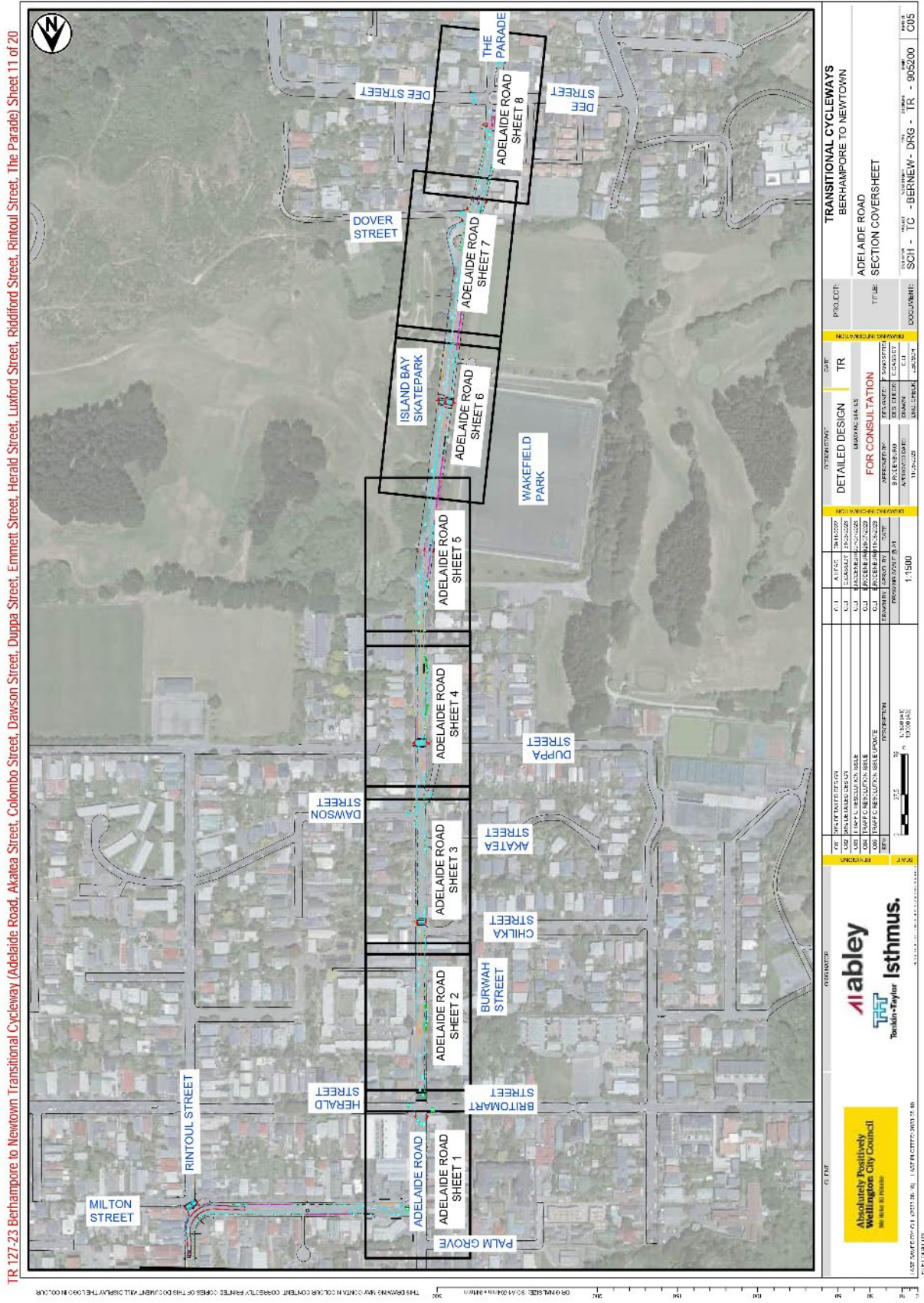
Me Heke Ki Pōneke



We are proposing a change in your area

Absolutely Positively
Wellington City Council

Me Heke Ki Pōneke



TR 127-23 Berhampore to Newtown Transitional Cycleway (Adelaide Road, Akatea Street, Colombo Street, Dawson Street, Duppa Street, Emmett Street, Herald Street, Luxford Street, Riddiford Street, Rintoul Street, The Parade) Sheet 11 of 20

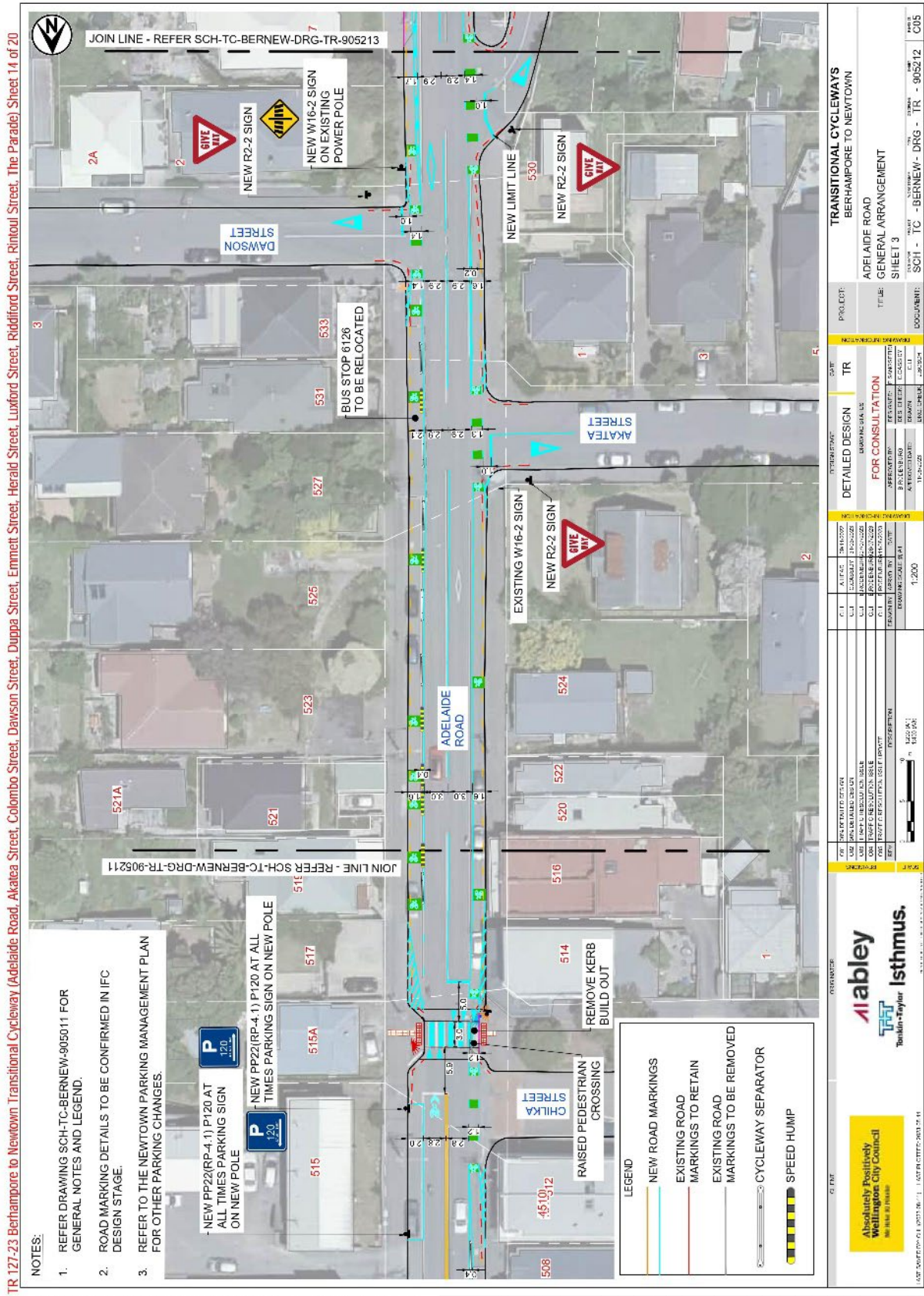
THIS DOCUMENT IS THE PROPERTY OF THE WELLINGTON CITY COUNCIL. IT IS TO BE USED ONLY FOR THE PURPOSES SPECIFIED IN THE TITLE. IT IS NOT TO BE REPRODUCED OR TRANSMITTED IN ANY FORM OR BY ANY MEANS, ELECTRONIC OR MECHANICAL, INCLUDING PHOTOCOPYING, RECORDING, OR BY ANY INFORMATION STORAGE AND RETRIEVAL SYSTEM. ANY UNAUTHORIZED USE OF THIS DOCUMENT IS STRICTLY PROHIBITED. THE WELLINGTON CITY COUNCIL ACCEPTS NO LIABILITY FOR ANY LOSS OR DAMAGE OF ANY KIND ARISING FROM THE USE OF THIS DOCUMENT.

<p>Absolutely Positively Wellington City Council We make it better.</p>		<p>Isthmus Building together</p>	
<p>DATE: 11/2/2022 SCALE: 1:1500 PROJECT: TRANSITIONAL CYCLEWAYS SUBPROJECT: BERHAMPORE TO NEWTOWN SECTION: ADELAIDE ROAD TITLE: SECTION COVERSHEET DOCUMENT: SCH - TC - BERNEW - DRG - TR - 9052000 C05</p>		<p>DATE: 11/2/2022 SCALE: 1:1500 PROJECT: TRANSITIONAL CYCLEWAYS SUBPROJECT: BERHAMPORE TO NEWTOWN SECTION: ADELAIDE ROAD TITLE: SECTION COVERSHEET DOCUMENT: SCH - TC - BERNEW - DRG - TR - 9052000 C05</p>	
<p>DATE: 11/2/2022 SCALE: 1:1500 PROJECT: TRANSITIONAL CYCLEWAYS SUBPROJECT: BERHAMPORE TO NEWTOWN SECTION: ADELAIDE ROAD TITLE: SECTION COVERSHEET DOCUMENT: SCH - TC - BERNEW - DRG - TR - 9052000 C05</p>		<p>DATE: 11/2/2022 SCALE: 1:1500 PROJECT: TRANSITIONAL CYCLEWAYS SUBPROJECT: BERHAMPORE TO NEWTOWN SECTION: ADELAIDE ROAD TITLE: SECTION COVERSHEET DOCUMENT: SCH - TC - BERNEW - DRG - TR - 9052000 C05</p>	

We are proposing a change in your area

Absolutely Positively
Wellington City Council

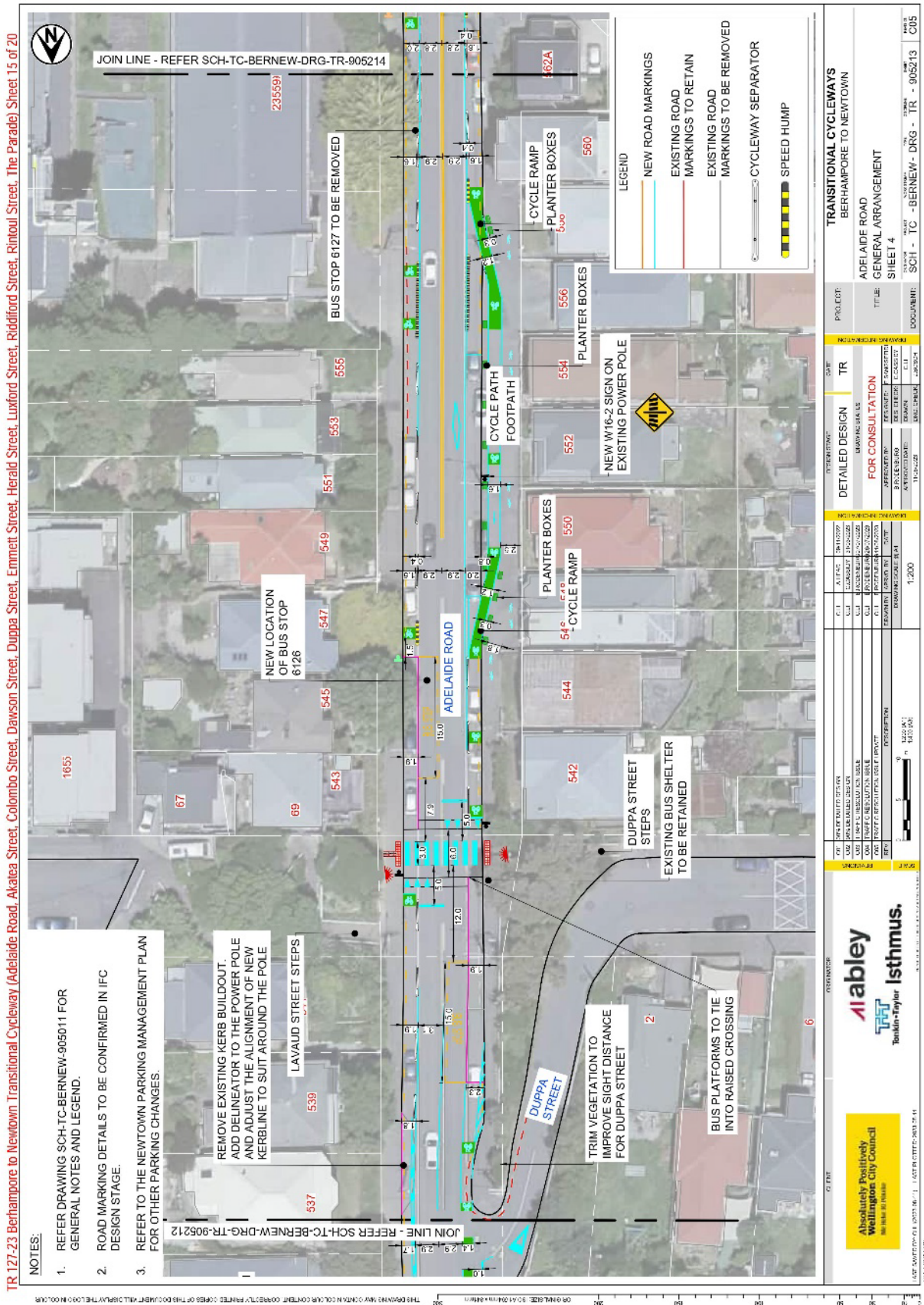
Me Heke Ki Pōneke



We are proposing a change in your area

Absolutely Positively
Wellington City Council

Me Heke Ki Pōneke



TR 127-23 Berhampore to Newtown Transitional Cycleway (Adelaide Road, Akatea Street, Colombo Street, Dawson Street, Duppa Street, Emmett Street, Herald Street, Luxford Street, Riddiford Street, Rimout Street, The Parade) Sheet 15 of 20

NOTES:

1. REFER DRAWING SCH-TC-BERNEW-905011 FOR GENERAL NOTES AND LEGEND.
2. ROAD MARKING DETAILS TO BE CONFIRMED IN IFC DESIGN STAGE.
3. REFER TO THE NEWTOWN PARKING MANAGEMENT PLAN FOR OTHER PARKING CHANGES.

REMOVE EXISTING KERB BUILDOUT. ADD DELINEATOR TO THE POWER POLE AND ADJUST THE ALIGNMENT OF NEW KERBLINE TO SUIT AROUND THE POLE

LAVAUD STREET STEPS

NEW LOCATION OF BUS STOP 6126

BUS STOP 6127 TO BE REMOVED

ADELAIDE ROAD

PLANTER BOXES 550

CYCLE RAMP 549

PLANTER BOXES 554

CYCLE RAMP 546

PLANTER BOXES 556

CYCLE RAMP 548

PLANTER BOXES 552

CYCLE RAMP 547

PLANTER BOXES 550

CYCLE RAMP 549

PLANTER BOXES 554

CYCLE RAMP 546

PLANTER BOXES 556

CYCLE RAMP 548

PLANTER BOXES 552

CYCLE RAMP 547

PLANTER BOXES 550

CYCLE RAMP 549

PLANTER BOXES 554

CYCLE RAMP 546

PLANTER BOXES 556

CYCLE RAMP 548

PLANTER BOXES 552

CYCLE RAMP 547

PLANTER BOXES 550

CYCLE RAMP 549

PLANTER BOXES 554

CYCLE RAMP 546

PLANTER BOXES 556

CYCLE RAMP 548

PLANTER BOXES 552

CYCLE RAMP 547

PLANTER BOXES 550

CYCLE RAMP 549

PLANTER BOXES 554

CYCLE RAMP 546

PLANTER BOXES 556

CYCLE RAMP 548

PLANTER BOXES 552

CYCLE RAMP 547

PLANTER BOXES 550

CYCLE RAMP 549

PLANTER BOXES 554

CYCLE RAMP 546

PLANTER BOXES 556

CYCLE RAMP 548

PLANTER BOXES 552

CYCLE RAMP 547

PLANTER BOXES 550

CYCLE RAMP 549

PLANTER BOXES 554

CYCLE RAMP 546

PLANTER BOXES 556

CYCLE RAMP 548

PLANTER BOXES 552

CYCLE RAMP 547

PLANTER BOXES 550

CYCLE RAMP 549

PLANTER BOXES 554

CYCLE RAMP 546

PLANTER BOXES 556

CYCLE RAMP 548

PLANTER BOXES 552

CYCLE RAMP 547

PLANTER BOXES 550

CYCLE RAMP 549

PLANTER BOXES 554

CYCLE RAMP 546

PLANTER BOXES 556

CYCLE RAMP 548

PLANTER BOXES 552

CYCLE RAMP 547

PLANTER BOXES 550

CYCLE RAMP 549

PLANTER BOXES 554

CYCLE RAMP 546

PLANTER BOXES 556

CYCLE RAMP 548

PLANTER BOXES 552

CYCLE RAMP 547

PLANTER BOXES 550

CYCLE RAMP 549

PLANTER BOXES 554

CYCLE RAMP 546

PLANTER BOXES 556

CYCLE RAMP 548

PLANTER BOXES 552

CYCLE RAMP 547

PLANTER BOXES 550

CYCLE RAMP 549

PLANTER BOXES 554

CYCLE RAMP 546

PLANTER BOXES 556

CYCLE RAMP 548

PLANTER BOXES 552

CYCLE RAMP 547

PLANTER BOXES 550

CYCLE RAMP 549

PLANTER BOXES 554

CYCLE RAMP 546

PLANTER BOXES 556

CYCLE RAMP 548

PLANTER BOXES 552

CYCLE RAMP 547

PLANTER BOXES 550

CYCLE RAMP 549

PLANTER BOXES 554

CYCLE RAMP 546

PLANTER BOXES 556

CYCLE RAMP 548

PLANTER BOXES 552

CYCLE RAMP 547

PLANTER BOXES 550

CYCLE RAMP 549

PLANTER BOXES 554

CYCLE RAMP 546

PLANTER BOXES 556

CYCLE RAMP 548

PLANTER BOXES 552

CYCLE RAMP 547

PLANTER BOXES 550

CYCLE RAMP 549

PLANTER BOXES 554

CYCLE RAMP 546

PLANTER BOXES 556

CYCLE RAMP 548

PLANTER BOXES 552

CYCLE RAMP 547

PLANTER BOXES 550

CYCLE RAMP 549

PLANTER BOXES 554

CYCLE RAMP 546

PLANTER BOXES 556

CYCLE RAMP 548

PLANTER BOXES 552

CYCLE RAMP 547

PLANTER BOXES 550

CYCLE RAMP 549

PLANTER BOXES 554

CYCLE RAMP 546

PLANTER BOXES 556

CYCLE RAMP 548

PLANTER BOXES 552

CYCLE RAMP 547

PLANTER BOXES 550

CYCLE RAMP 549

PLANTER BOXES 554

CYCLE RAMP 546

PLANTER BOXES 556

CYCLE RAMP 548

PLANTER BOXES 552

CYCLE RAMP 547

PLANTER BOXES 550

CYCLE RAMP 549

PLANTER BOXES 554

CYCLE RAMP 546

PLANTER BOXES 556

CYCLE RAMP 548

PLANTER BOXES 552

CYCLE RAMP 547

PLANTER BOXES 550

CYCLE RAMP 549

PLANTER BOXES 554

CYCLE RAMP 546

PLANTER BOXES 556

CYCLE RAMP 548

PLANTER BOXES 552

CYCLE RAMP 547

PLANTER BOXES 550

CYCLE RAMP 549

PLANTER BOXES 554

CYCLE RAMP 546

PLANTER BOXES 556

CYCLE RAMP 548

PLANTER BOXES 552

CYCLE RAMP 547

PLANTER BOXES 550

CYCLE RAMP 549

PLANTER BOXES 554

CYCLE RAMP 546

PLANTER BOXES 556

CYCLE RAMP 548

PLANTER BOXES 552

CYCLE RAMP 547

PLANTER BOXES 550

CYCLE RAMP 549

PLANTER BOXES 554

CYCLE RAMP 546

PLANTER BOXES 556

CYCLE RAMP 548

PLANTER BOXES 552

CYCLE RAMP 547

PLANTER BOXES 550

CYCLE RAMP 549

PLANTER BOXES 554

CYCLE RAMP 546

PLANTER BOXES 556

CYCLE RAMP 548

PLANTER BOXES 552

CYCLE RAMP 547

PLANTER BOXES 550

CYCLE RAMP 549

PLANTER BOXES 554

CYCLE RAMP 546

PLANTER BOXES 556

CYCLE RAMP 548

PLANTER BOXES 552

CYCLE RAMP 547

PLANTER BOXES 550

CYCLE RAMP 549

PLANTER BOXES 554

CYCLE RAMP 546

PLANTER BOXES 556

CYCLE RAMP 548

PLANTER BOXES 552

CYCLE RAMP 547

PLANTER BOXES 550

CYCLE RAMP 549

PLANTER BOXES 554

CYCLE RAMP 546

PLANTER BOXES 556

CYCLE RAMP 548

PLANTER BOXES 552

CYCLE RAMP 547

PLANTER BOXES 550

CYCLE RAMP 549

PLANTER BOXES 554

CYCLE RAMP 546

PLANTER BOXES 556

CYCLE RAMP 548

PLANTER BOXES 552

CYCLE RAMP 547

PLANTER BOXES 550

CYCLE RAMP 549

PLANTER BOXES 554

CYCLE RAMP 546

PLANTER BOXES 556

CYCLE RAMP 548

PLANTER BOXES 552

CYCLE RAMP 547

PLANTER BOXES 550

CYCLE RAMP 549

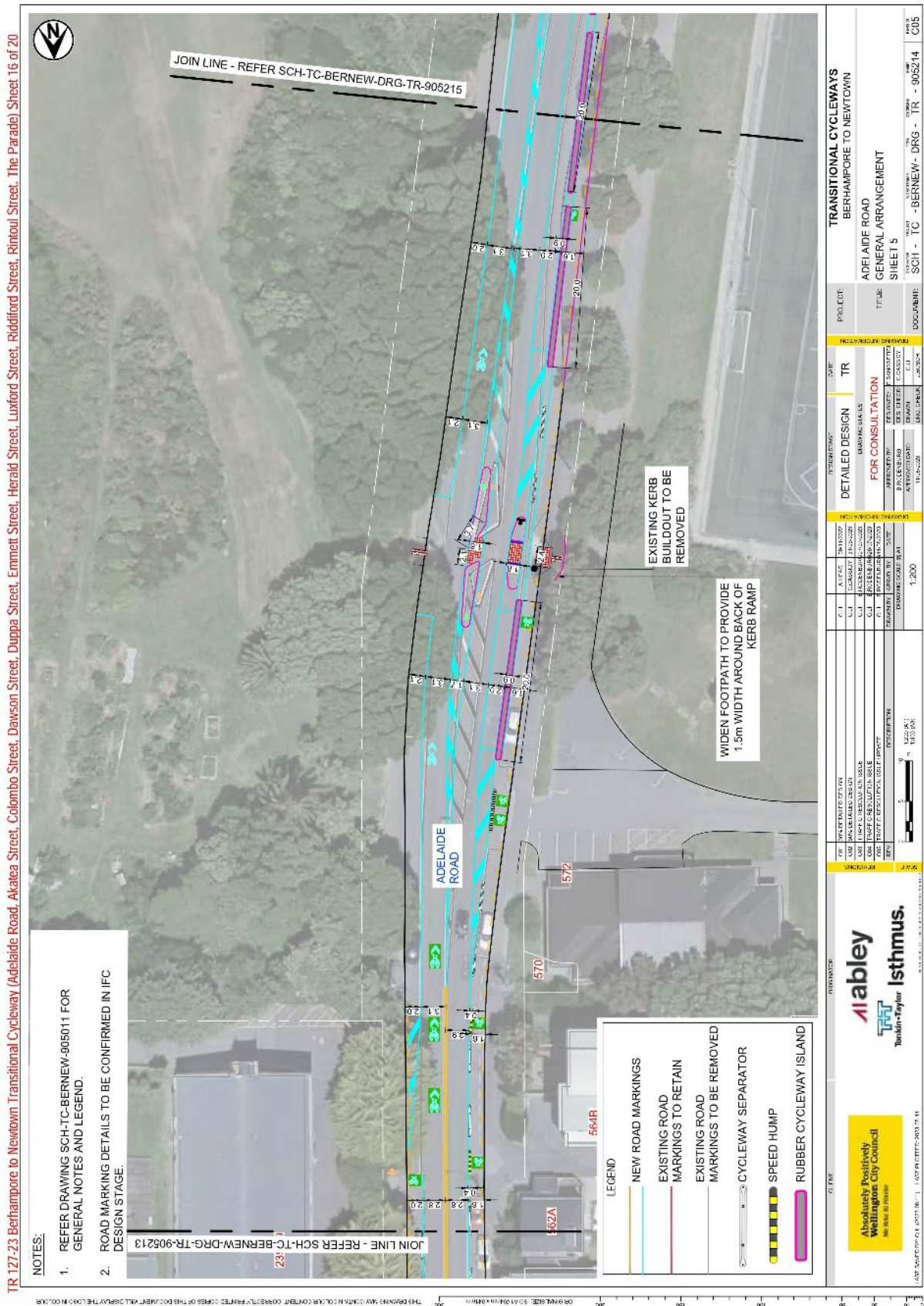
PLANTER BOXES 554

CYCLE RAMP

We are proposing a change in your area

Absolutely Positively
Wellington City Council

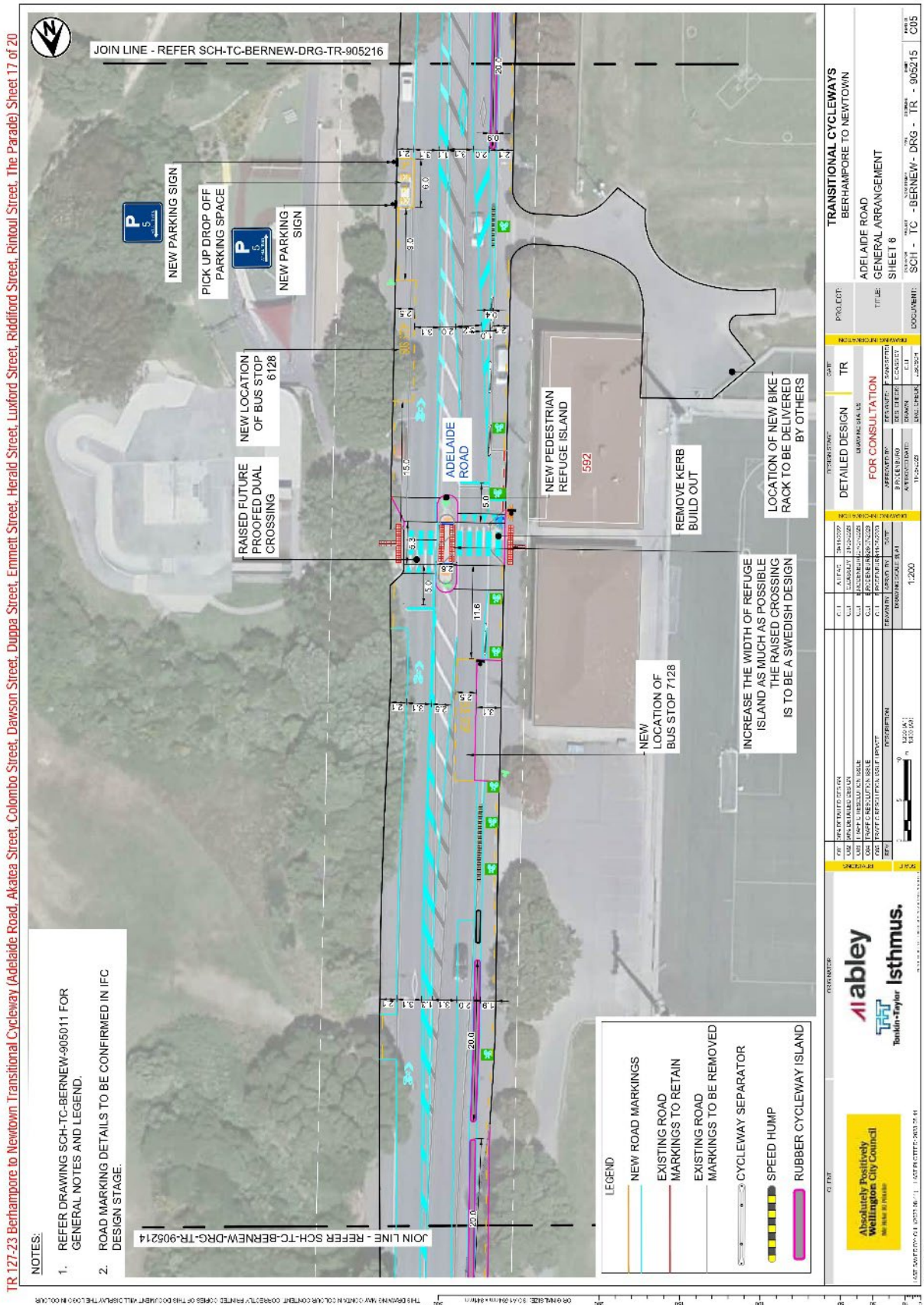
Me Heke Ki Pōneke



We are proposing a change in your area

Absolutely Positively
Wellington City Council

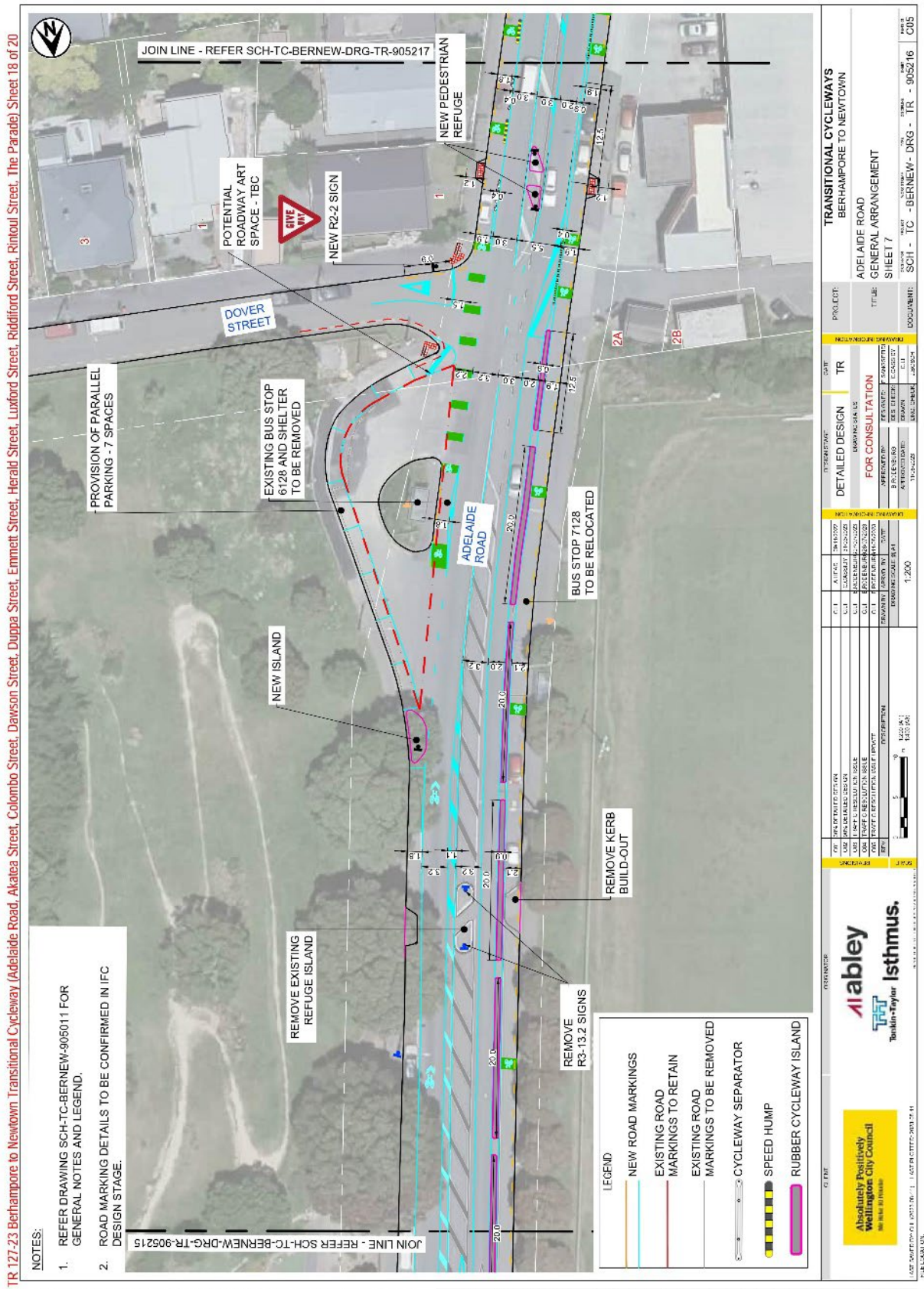
Me Heke Ki Pōneke



We are proposing a change in your area

Absolutely Positively
Wellington City Council

Me Heke Ki Pōneke



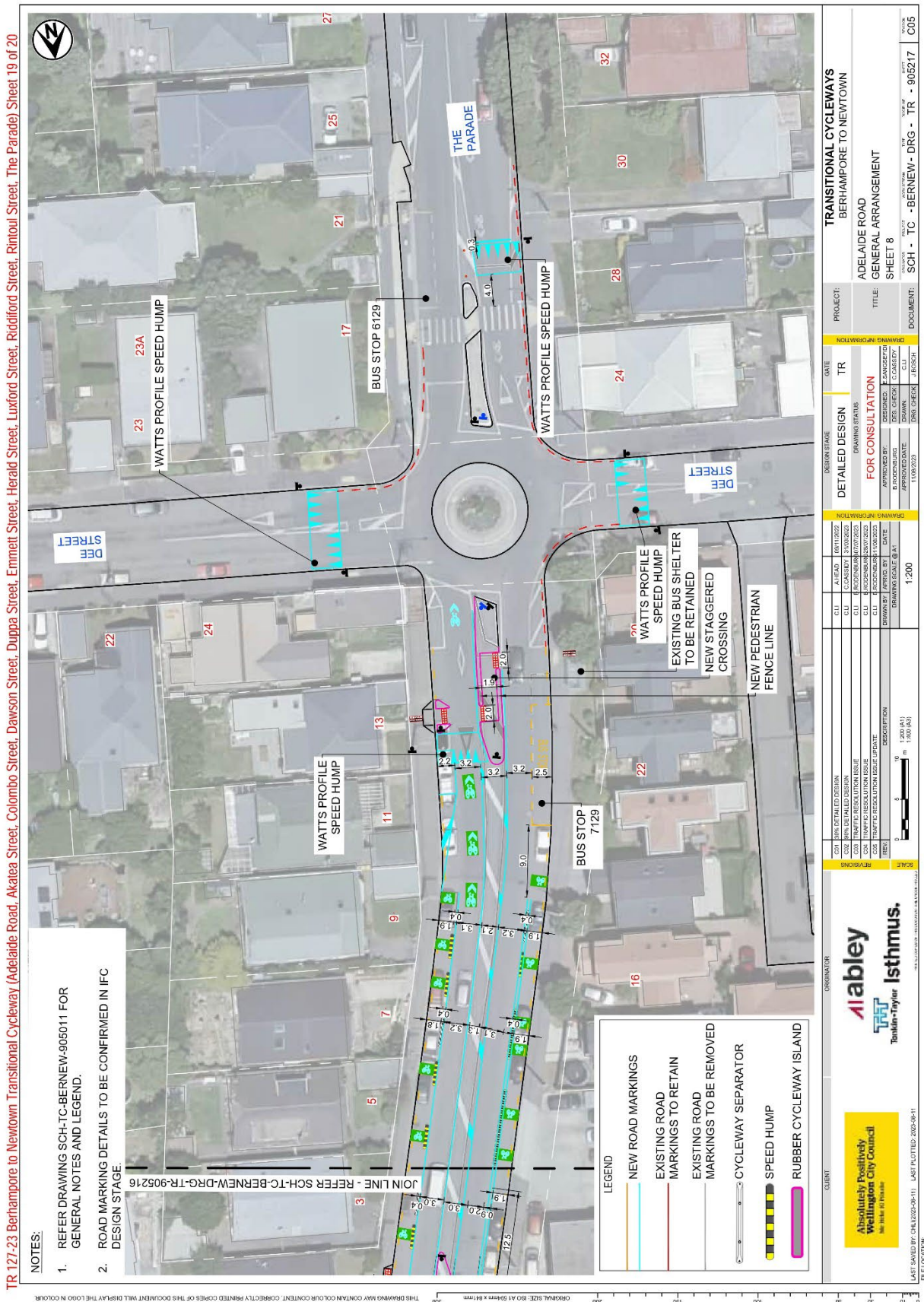
- NOTES:**
1. REFER DRAWING SCH-TC-BERNEW-905011 FOR GENERAL NOTES AND LEGEND.
 2. ROAD MARKING DETAILS TO BE CONFIRMED IN IFC DESIGN STAGE.

TR 127-23 Berhampore to Newtown Transitional Cycleway (Adelaide Road, Akatea Road, Colombo Street, Dawson Street, Duppa Street, Emmett Street, Herald Street, Luxford Street, Riddiford Street, Rintoul Street, The Parade) Sheet 18 of 20

We are proposing a change in your area

Absolutely Positively
Wellington City Council

Me Heke Ki Pōneke



- NOTES:**
1. REFER DRAWING SCH-TC-BERNEW-905011 FOR GENERAL NOTES AND LEGEND.
 2. ROAD MARKING DETAILS TO BE CONFIRMED IN IFC DESIGN STAGE.

TR 127-23 Berhampore to Newtown Transitional Cycleway (Adelaide Road, Akatea Street, Colombo Street, Dawson Street, Duppa Street, Emmett Street, Herald Street, Luxford Street, Riddford Street, Rimoul Street, The Parade) Sheet 19 of 20

THIS DRAWING MAY CONTAIN COLOR CONTENT. CORRECTLY PRINTED COPIES OF THIS DOCUMENT WILL DISPLAY THE COLOR IN COLOR. ORIGINAL SIZE: B0 A1 508mm x 647mm

CLIENT Absolutely Positively Wellington City Council Me Heke Ki Pōneke		DESIGNER Abley Tait Tamlin-Taylor Isthmus.	
REVISIONS NO. DATE BY DESCRIPTION		SCALE 1:200 (A1) 1:500 (A0)	
PROJECT TRANSITIONAL CYCLEWAYS BERHAMPORE TO NEWTOWN		DATE TR	
TITLE ADELAIDE ROAD GENERAL ARRANGEMENT SHEET 8		DESIGN STAGE DETAILED DESIGN	
APPROVED BY: [Signature] APPROVED DATE: 11/09/2023		DRAWING INFORMATION DRAWING NO: 1310/04/02 DATE: 11/09/2023 DRAWN BY: [Name] CHECKED BY: [Name]	
DOCUMENT SCH - TC - BERNEW - DRG - TR - 905217		PROJECT INFORMATION PROJECT NO: 1310/04/02 DRAWING NO: 1310/04/02	

We are proposing a change in your area

Legal Descriptions:

Remove from Schedule A (Time Limited) of the Traffic Restrictions Schedule

Street Name	Restriction Type	Resolution Description
Adelaide Road	<i>P60 - Monday to Saturday, 8:00am - 6:00pm</i>	<i>East side, commencing 23 metres south of its intersection with Luxford Street (Grid coordinates x= 1,748,589.7 m, y= 5,424,208.4 m), and extending in a southerly direction following the eastern kerb line for 30 metres.</i>
Adelaide Road	<i>P10, Monday to Friday, 9:00am - 6:00pm. Saturday and Sunday, 8:00am - 6:00pm</i>	<i>West side, commencing 36.5 metres north of its intersection with Britomart Street and extending in a northerly direction following the western kerbline for 25.5 metres.</i>
Adelaide Road	<i>P30, Monday to Saturday, 8:00am - 6:00pm</i>	<i>East side, commencing 47 metres north of its intersection with Herald Street and extending in a northerly direction following the eastern kerbline for 21 metres.</i>
Emmett Street	<i>P60, 8am-8pm</i>	<i>East side, commencing 14.5 metres north of its intersection with Riddiford Street (Grid coordinates x= 1748939.13m, y= 5425094.70m), and extending in a northerly direction following the eastern kerb line for 5.5 metres</i>
Rintoul Street	<i>P5, Monday to Sunday, 8:00am - 8:30pm</i>	<i>East side, commencing 97.5 metres south of its intersection with Waripori Street (Grid coordinates x= 2658833.9m, y= 5986032.0), and extending in an southerly direction following the eastern kerb line for 8 metres.</i>
Rintoul Street	<i>P60, Monday to Saturday, 8:00am - 6:00pm</i>	<i>East side, commencing 45 metres north of its intersection with Millward Street and extending in a northerly direction following the eastern kerbline for 15 metres.</i>
Rintoul Street	<i>P10, At All Times</i>	<i>West side, commencing 49.5 metres north of its intersection with Colombo Street and extending in a northerly direction following the western kerbline for 13 metres.</i>
Rintoul Street	<i>P15, Mon- Sun 8:00am-6:00pm</i>	<i>West side, commencing 16.0 metres north of its intersection with Colombo Street (Grid Coordinates x=1,748,902.1498 m, y=5,425,036.0587 m), and extending in a northerly direction following the western kerbline for 5.0 metres</i>

We are proposing a change in your area

Rintoul Street	<i>P15, Mon- Sun 8:00am-6:00pm</i>	<i>West side, commencing 27.5 metres north of its intersection with Colombo Street (Grid Coordinates x=1,748,902.1498 m, y=5,425,036.0587 m), and extending in a northerly direction following the western kerbline for 7.0 metres</i>
Rintoul Street	<i>P60, Mon- Sun 8:00am-6:00pm</i>	<i>West side, commencing 6.0 metres north of its intersection with Colombo Street (Grid Coordinates x=1,748,902.1498 m, y=5,425,036.0587 m), and extending in a northerly direction following the western kerbline for 10.0 metres</i>
Rintoul Street	<i>P30, Monday to Sunday 8:00am - 8:30pm</i>	<i>East side, commencing 92.5 metres south of its intersection with Waripori Street (Grid Coordinates x= 2658833.9 m, y= 5986032.0 m), and extending in a southerly direction following the eastern kerbline for 5 metres.</i>
Rintoul Street	<i>P5, Monday to Saturday 7:00am – 8:30pm and Sunday 7:30am – 8:30pm</i>	<i>East side, commencing 97.5 metres south of its intersection with Te Wharepōuri Street (Grid coordinates x= 265,8833.9m, y= 598,6032.1m), and extending in a southerly direction following the eastern kerb line for 8 metres.</i>
Luxford Street	<i>P10, Monday- Friday 8am-6pm</i>	<i>South side, commencing 161 metres west of its intersection with Rintoul street (Grid coordinates X=1,748,791,711.62m Y=5,424,200.97m) and extending in an westerly direction following the southern kerb line for 4.6 metres.</i>

We are proposing a change in your area

Add to Schedule A (Time Limited) of the Traffic Restrictions Schedule

Street Name	Restriction Type	Resolution Description
Adelaide Road	<i>P60, Monday to Saturday, 8:00am - 6:00pm</i>	<i>East side, commencing 23 metres south of its intersection with Luxford Street (Grid coordinates x= 1,748,589.7 m, y= 5,424,208.4 m), and extending in a southerly direction following the eastern kerb line for 17.5 metres.</i>
Adelaide Road	<i>P5, At All Times</i>	<i>East side, commencing 429 metres south of its intersection with Dawson Street (Grid coordinates x= 1748566.51 m, y= 5423845.54 m), and extending in a southerly direction following the eastern kerb line for 6 metres.</i>
Adelaide Road	<i>P60, Monday – Friday, 9.30am - 3.00pm and 6.00pm – 7.00am, Saturday and Sunday, At All Times</i>	<i>West side, commencing 103.5 metres north of its intersection with Britomart Street (Grid coordinates x= 1748573.84 m, y= 5424127.51 m), and extending in a northerly direction following the western kerb line for 11 metres.</i>
Adelaide Road	<i>P120 at all times</i>	<i>East side, commencing 144 metres south of its intersection with Herald Street (Grid coordinates x= 1748582.57 m, y= 5424117.19 m), and extending in a southerly direction following the eastern kerb line for 16.5 metres.</i>
Emmett Street	<i>P10, Monday to Sunday, 8.00am – 8.00pm</i>	<i>East side, commencing 14.5 metres north of its intersection with Riddiford Street (Grid coordinates x= 1748939.13m, y= 5425094.70m), and extending in a northerly direction following the eastern kerb line for 5.4 metres.</i>
Herald Street	<i>P60, Monday to Saturday, 8:00am - 6:00pm</i>	<i>North side, commencing 18 metres east of its intersection with Adelaide Road (Grid coordinates X = 1748583.08m Y= 5424124.53m) and extending in an easterly direction following the northern kerbline for 29 metres.</i>
Rintoul Street	<i>P120, At All Times</i>	<i>East side, commencing 16m south of its intersection with Te Wharepōuri Street (Grid coordinates X = 1748810.876m Y = 5424320.190m) and extending in a southerly direction following the eastern kerbline for 6.5 metres.</i>
Rintoul Street	<i>P60, At All Times</i>	<i>East side, commencing 70.5 metres south of its intersection with Te Wharepōuri Street (Grid coordinates X = 1748810.876m Y = 5424320.190m) and extending in a southerly direction following the eastern kerbline for 6 metres.</i>

We are proposing a change in your area

Rintoul Street	<i>P10, At All Times</i>	<i>East side, commencing 76.5 metres south of its intersection with Te Wharepōuri Street (Grid coordinates X = 1748810.876m Y = 5424320.190m) and extending in a southerly direction following the eastern kerbline for 11.5 metres.</i>
Rintoul Street	<i>P10, At All Times</i>	<i>East side, commencing 6.5 metres south of its intersection with Milton Street (Grid coordinates X = 1748803.66m Y = 5424192.88m) and extending in a southerly direction following the eastern kerbline for 8.5 metres.</i>
Rintoul Street	<i>P90, At All Times</i>	<i>West side, commencing 6 metres north of its intersection with Colombo Street (Grid coordinates X = 1748902.93m Y = 5425035.04m) and extending in a northerly direction following the western kerbline for 5.5 metres.</i>
Rintoul Street	<i>P10, At All Times</i>	<i>West side, commencing 11.5 metres north of its intersection with Colombo Street (Grid coordinates X = 1748902.93m Y = 5425035.04m) and extending in a northerly direction following the western kerbline for 15.5 metres.</i>

We are proposing a change in your area

Remove from Schedule B (Class Restricted) of the Traffic Restrictions Schedule

Street Name	Restriction Type	Resolution Description
Adelaide Road	<i>Bus Stop, At All Times</i>	<i>West, commencing 38 metres south of its intersection with Duppa Street (Grid coordinates x= 1748556.5 m, y= 5423831.6 m), and extending in a southerly direction following the western kerbline for 15 metres.</i>
Adelaide Road	<i>Bus Stop, At All Times</i>	<i>East side, commencing 236.5 metres south of its intersection with Brittomart Street and extending in a southerly direction following the eastern kerbline for 23 metres.</i>
Adelaide Road	<i>Bus Stop, At All Times</i>	<i>East side, commencing 154 metres east of its intersection with Dawson Street and extending in a southerly direction following the eastern kerbline for 15 metres.</i>
Adelaide Road	<i>Bus Stop, At All Times</i>	<i>West side, commencing 493 metres south of its intersection with Duppa Street and extending in a southerly direction following the western kerbline for 23 metres.</i>
Adelaide Road	<i>Bus Stop, At All Times</i>	<i>Bus Terminus north of Dover Street. East side, commencing 5.5 metres north of its intersection with Dover Street and extending in a northerly direction following the eastern kerbline for 21.5 metres.</i>
Adelaide Road	<i>Bus Stop, At All Times</i>	<i>West side, commencing 19.5 metres north of its intersection with Post Office Avenue and extending in a northerly direction following the western kerbline for 12 metres.</i>
Adelaide Road	<i>Bus Stop, At All Times</i>	<i>East side, commencing 49 metres south of its intersection with Herald Street (Grid coordinates x= 1748582.8 m, y= 5424117.1 m), and extending in a southerly direction following the eastern kerbline for 20 metres.</i>
Adelaide Road	<i>Bus Stop, At All Times</i>	<i>West, commencing 38 metres north of its intersection with Chilka Street (Grid coordinates x = 1748564.0 m, y= 5423961.8 m), and extending in a northerly direction following the western kerbline for 20 metres.</i>
Adelaide Road	<i>Bus Stop, At All Times</i>	<i>West, commencing 31 metres south of its intersection with Duppa Street (Grid coordinates x= 1748556.5 m, y= 5423831.6 m), and extending in a southerly direction following the western kerbline for 25 metres.</i>

We are proposing a change in your area

Luxford Street	<i>Taxi Stand</i>	<i>South side, commencing 83.5 metres east of its intersection with Adelaide Road and extending in an easterly direction following the southern kerbline for 17.5 metres.</i>
Luxford Street	<i>Bus Stop, At All Times</i>	<i>North side, commencing 65.5 metres west of its intersection with Cowan Place and extending in a westerly direction following the northern kerbline for 15.5 metres.</i>
Riddiford Street	<i>P5, Except 7:00am - 9:00am, Monday to Friday</i>	<i>West side, commencing 13 metres north of its intersection with Rintoul Street and extending in a northerly direction following the western kerbline for 18 metres.</i>
Riddiford Street	<i>Bus Stop, At All Times</i>	<i>West side, commencing 31 metres north of its intersection with Rintoul Street and extending in a northerly direction following the western kerbline for 42.5 metres.</i>
Rintoul Street	<i>P60 Mobility Parking displaying an operational mobility permit, Monday to Friday, 8:00am-5:00pm</i>	<i>East side, commencing 167 metres south of its intersection with Riddiford Street (Grid coordinates X=1,748,926.05m Y=5,425,089.29m) and extending in a southerly direction following the eastern kerb line for 7 metres.</i>
Rintoul Street	<i>Bus Stop, At All Times</i>	<i>East side, commencing 290.5 metres south of its intersection with Millward Street (grid coordinates x=1748868.5 m, y=5424861.6 m), and extending in a southerly direction following the eastern kerbline for 19 metres.</i>
Rintoul Street	<i>Bus Stop, At All Times</i>	<i>West side commencing 6 metres south of its intersection with Stoke Street and extending in a southerly direction following the western kerbline for 18 metres.</i>
Rintoul Street	<i>Bus Stop, At All Times</i>	<i>West side, commencing 94 metres south of its intersection with Brixham Way and extending in a southerly direction following the western kerbline for 8 metres.</i>
Rintoul Street	<i>Bus Stop, At All Times</i>	<i>West side, commencing 256 metres north of its intersection with Waripori Street, (Grid coordinates x = 1748801.9 m, y= 5424328.8 m), and extending in a northerly direction following the western kerbline for 20 metres.</i>

We are proposing a change in your area

Rintoul Street	<i>Bus Stop, At All Times</i>	<i>East side, commencing 96.5 metres south of its intersection with Millward Street and extending in a southerly direction following the eastern kerbline for 12 metres.</i>
Rintoul Street	<i>Bus Stop, At All Times</i>	<i>East side, commencing 53 metres south of its intersection with Waripori Street and extending in a southerly direction following the eastern kerbline for 18 metres.</i>
Rintoul Street	<i>Bus Stop, At All Times</i>	<i>West side, commencing 94 metres south of its intersection with Brixham Way and extending in a southerly direction following the western kerbline for 8 metres.</i>
Rintoul Street	<i>Bus Stop, At All Times</i>	<i>East side, commencing 173.5 metres north of its intersection with Millward Street and extending in a northerly direction following the eastern kerbline for 30 metres.</i>
Rintoul Street	<i>Bus Stop, At All Times</i>	<i>West side, commencing 256 metres north of its intersection with Waripori Street, (Grid coordinates $x = 1748801.9$ m, $y = 5424328.8$ m), and extending in a northerly direction following the western kerbline for 20 metres.</i>

We are proposing a change in your area

Add to Schedule B (Class Restricted) of the Traffic Restrictions Schedule

Street Name	Restriction Type	Resolution Description
Adelaide Road	<i>P30 Loading Zone, Monday to Sunday, 8.00am – 8.00pm</i>	<i>East side, commencing 40.5 metres south of its intersection with Luxford Street (Grid coordinates x= 1,748,589.7 m, y= 5,424,208.4 m), and extending in a southerly direction following the eastern kerb line for 11.5 metres.</i>
Adelaide Road	<i>Bus Stop – At All Times</i>	<i>East side, commencing 63 metres south of its intersection with Herald Street (Grid coordinates x= 1748582.57 m, y= 5424117.19 m), and extending in a southerly direction following the eastern kerb line for 15 metres.</i>
Adelaide Road	<i>Bus Stop – At All Times</i>	<i>East side, commencing 75 metres south of its intersection with Dawson Street (Grid coordinates x= 1748566.51 m, y= 5423845.54 m), and extending in a southerly direction following the eastern kerb line for 15 metres.</i>
Adelaide Road	<i>Bus Stop – At All Times</i>	<i>East side, commencing 405 metres south of its intersection with Dawson Street (Grid coordinates x= 1748566.51 m, y= 5423845.54 m), and extending in a southerly direction following the eastern kerb line for 15 metres.</i>
Adelaide Road	<i>Bus Stop – At All Times</i>	<i>West side, commencing 189 metres north of its intersection with The Parade (Grid coordinates x= 1748471.26 m, y= 5423294.34 m), and extending in a northerly direction following the western kerb line for 15 metres.</i>
Adelaide Road	<i>Bus Stop – At All Times</i>	<i>West side, commencing 508 metres north of its intersection with The Parade (Grid coordinates x= 1748471.26 m, y= 5423294.34 m), and extending in a northerly direction following the western kerb line for 15 metres.</i>
Adelaide Road	<i>P30 Loading Zone, Monday – Friday, 9.30am - 3.00pm and 6.00pm – 7.00am, Saturday and Sunday, At All Times</i>	<i>West side, commencing 30.5 metres north of its intersection with Britomart Street (Grid coordinates x= 1748573.84 m, y= 5424127.51 m), and extending in a northerly direction following the western kerb line for 6 metres.</i>

We are proposing a change in your area

Adelaide Road	<i>Bus Stop – At All Times</i>	<i>West side, commencing 48.5 metres north of its intersection with Britomart Street (Grid coordinates x= 1748573.84 m, y= 5424127.51 m), and extending in a northerly direction following the western kerb line for 15 metres.</i>
Emmett Street	<i>P30 Loading Zone, Monday to Sunday, 8.00am – 8.00pm</i>	<i>East side, commencing 20 metres north of its intersection with Riddiford Street (Grid coordinates x= 1748939.13m, y= 5425094.70m), and extending in a northerly direction following the eastern kerb line for 6 metres.</i>
Riddiford Street	<i>P30 Loading Zone, Monday – Friday, 9.30am - 3.00pm and 6.00pm – 7.00am, Saturday and Sunday, At All Times</i>	<i>West side, commencing 24.5m north of its intersection with Rintoul Street (Grid coordinates X = 1748925.08m Y= 5425102.36m) and extending in a northerly direction following the western kerbline for 9 metres</i>
Riddiford Street	<i>Bus Stop – At All Times</i>	<i>West side, commencing 33.5m north of its intersection with Rintoul Street (Grid coordinates X = 1748925.08m Y= 5425102.36m) and extending in a northerly direction following the western kerbline for 42.5 metres</i>
Riddiford Street	<i>Bus Lane – At All Times</i>	<i>West side, commencing at its intersection with Rintoul Street (Grid coordinates X = 1748925.08m Y= 5425102.36m) and extending in a northerly direction following the western kerbline for 100 metres to its intersection with Hall Street</i>
Rintoul Street	<i>Bus Stop – At All Times</i>	<i>East side, commencing 30 metres south of its intersection with Riddiford Street (Grid coordinates X = 1748926.455m Y= 5425084.543m) and extending in a southerly direction following the eastern kerbline for 15 metres.</i>
Rintoul Street	<i>P60 Mobility Parking, Displaying an Operation Mobility Permit Only, At All Times</i>	<i>East side, commencing 160.5 metres south of its intersection with Riddiford Street (Grid coordinates X = 1748926.455m Y= 5425084.543m) and extending in a southerly direction following the eastern kerbline for 7 metres.</i>
Rintoul Street	<i>Bus Stop – At All Times</i>	<i>East side, commencing 77.5 metres south of its intersection with Millward Street (Grid coordinates X = 1748870.022m Y = 5424862.296m) and extending in a southerly direction following the eastern kerbline for 15 metres.</i>

We are proposing a change in your area

Rintoul Street	<i>Bus Stop – At All Times</i>	<i>East side, commencing 359.5 metres south of its intersection with Millward Street (Grid coordinates X = 1748870.022m Y = 5424862.296m) and extending in a southerly direction following the eastern kerbline for 15 metres.</i>
Rintoul Street	<i>Bus Stop – At All Times</i>	<i>East side, commencing 425 metres south of its intersection with Millward Street (Grid coordinates X = 1748870.022m Y = 5424862.296m) and extending in a southerly direction following the eastern kerbline for 15 metres.</i>
Rintoul Street	<i>Bus Stop – At All Times</i>	<i>East side, commencing 43 metres south of its intersection with Te Wharepōuri Street (Grid coordinates X = 1748810.876m Y = 5424320.190m) and extending in a southerly direction following the eastern kerbline for 15 metres.</i>
Rintoul Street	<i>Bus Stop – At All Times</i>	<i>West side, commencing 23 metres north of its intersection with Te Wharepōuri Street (Grid coordinates X = 1748803.431m Y = 5424328.631m) and extending in a northerly direction following the western kerbline for 15 metres.</i>
Rintoul Street	<i>Bus Stop – At All Times</i>	<i>West side, commencing 212 metres north of its intersection with Te Wharepōuri Street (Grid coordinates X = 1748803.431m Y = 5424328.631m) and extending in a northerly direction following the western kerbline for 15 metres.</i>
Rintoul Street	<i>Bus Stop – At All Times</i>	<i>West side, commencing 390 metres north of its intersection with Te Wharepōuri Street (Grid coordinates X = 1748803.431m Y = 5424328.631m) and extending in a northerly direction following the western kerbline for 15 metres.</i>
Rintoul Street	<i>P30 Loading Zone, At All Times</i>	<i>West side, commencing 27 metres north of its intersection with Colombo Street (Grid coordinates X = 1748902.93m Y = 5425035.04m) and extending in a northerly direction following the western kerbline for 7.6 metres.</i>
The Parade	<i>Bus Stop – At All Times</i>	<i>West side, commencing 20.5 metres north of its intersection with Dee Street (Grid coordinates x= 1748444.96 m, y= 5423187.90 m), and extending in a northerly direction following the western kerb line for 15 metres.</i>

We are proposing a change in your area

Add to Schedule C (Direction, Placement and Lane Use) of the Traffic Restrictions Schedule

Column One	Column Two	Column Three
Adelaide Road	Clearway, Monday to Friday, 7:00am – 9.30am and 3.00pm-6.00pm	West side, commencing 30.5 metres north of its intersection with Britomart Street (Grid coordinates x= 1748573.84 m, y= 5424127.51 m), and extending in a northerly direction following the western kerb line for 6 metres.
Adelaide Road	Clearway, Monday to Friday, 7:00am – 9.30am and 3.00pm-6.00pm	West side, commencing 103.5 metres north of its intersection with Britomart Street (Grid coordinates x= 1748573.84 m, y= 5424127.51 m), and extending in a northerly direction following the western kerb line for 11 metres.
Luxford Street	No Right Turn, At All Times	Eastbound at its intersection with Rintoul Street.
Riddiford Street	Clearway, Monday to Friday, 7:00am – 9.30am and 3.00pm-6.00pm	West side, commencing 24.5m north of its intersection with Rintoul Street (Grid coordinates X = 1748925.08m Y= 5425102.36m) and extending in a northerly direction following the western kerbline for 9 metres
Riddiford Street	Bus Lane – At All Times	West side, commencing at its intersection with Rintoul Street (Grid coordinates X = 1748925.08m Y= 5425102.36m) and extending in a northerly direction following the western kerbline for 100 metres to its intersection with Hall Street

Remove from Schedule D (No Stopping) of the Traffic Restrictions Schedule

Street Name	Restriction Type	Resolution Description
Adelaide Road	No Stopping, At All Times	East side, commencing from its intersection with Dawson Street and extending in a southerly direction following the eastern kerbline for 5 metres.
Adelaide Road	No Stopping, At All Times	East side, commencing 123 metres south of its intersection with Dawson Street and extending in a southerly direction following the eastern kerbline for 32 metres.

We are proposing a change in your area

Adelaide Road	<i>No Stopping, At All Times</i>	<i>East side, commencing from its intersection with Britomart Street and extending in a southerly direction following the eastern kerbline for 9.5 metres.</i>
Adelaide Road	<i>No Stopping, At All Times</i>	<i>East side, commencing 259.5 metres south of its intersection with Britomart Street and extending in a southerly direction following the eastern kerbline for 6 metres to its intersection with Dawson Street.</i>
Adelaide Road	<i>No Stopping, At All Times</i>	<i>West side, commencing from its intersection with Duppa Street and extending in a southerly direction following the western kerbline for 5.5 metres.</i>
Adelaide Road	<i>No Stopping, At All Times</i>	<i>"East side, commencing 159 metres south of its intersection with Herald Street (Grid Coordinates x= 1748582.8 m, y= 5424117.1 m), and extending in a southerly direction following the eastern kerbline for 9 metres."</i>
Adelaide Road	<i>No Stopping, At All Times</i>	<i>"West side, commencing 59 metres north of its intersection with Akatea Street (Grid Coordinates x= 1748558.6 m, y= 5423879.1 m), and extending in a northerly direction following the western kerbline for 9 metres."</i>
Adelaide Road	<i>No Stopping, At All Times</i>	<i>West side, commencing 241.5 metres north of its intersection with Dee Street (Grid coordinates x= 1748446.0 m, y= 5423187.0 m), and extending in a northerly direction following the western kerbline for 7 metres.</i>
Adelaide Road	<i>No Stopping, At All Times</i>	<i>West, commencing 33 metres south of its intersection with Duppa Street (Grid coordinates x= 1748556.5 m, y= 5423831.6 m), and extending in a southerly direction following the western kerbline for 5 metres.</i>
Adelaide Road	<i>No Stopping, At All Times</i>	<i>West, commencing 53 metres south of its intersection with Duppa Street (Grid coordinates x= 1748556.5 m, y= 5423831.6 m), and extending in a southerly direction following the western kerbline for 9 metres.</i>
Adelaide Road	<i>No Stopping, At All Times</i>	<i>West, commencing 93 metres south of its intersection with Britomart Street (Grid coordinates x= 1748572.8 m, y= 5424118.1 m), and extending in a southerly direction following the western kerbline for 5 metres.</i>
Adelaide Road	<i>No Stopping, At All Times</i>	<i>West side, Commencing 273 meters north of its intersection with Dee Street (Grid Coordinates X= 1,748,444.9, Y=5,423,187.1) and extending in a northerly direction for 8 meters.</i>

We are proposing a change in your area

Adelaide Road	<i>No Stopping, At All Times</i>	<i>West side, commencing 134 metres north of its intersection with Dee Street (Grid coordinates x=1,748,445.19m, y=4,423,187.68m) and extending in a northerly direction following the western kerb line for 6 metres.</i>
Luxford Street	<i>No Stopping, At All Times</i>	<i>North side, commencing from its intersection with Rintoul Street and extending in a westerly direction following the northern kerbline for 24.5 metres.</i>
Luxford Street	<i>No Stopping, At All Times</i>	<i>North side, commencing 24.5 metres west of its intersection with Rintoul Street and extending in a westerly direction following the northern kerbline for 15.5 metres.</i>
Luxford Street	<i>No Stopping, At All Times</i>	<i>North side, commencing 81 metres west of its intersection with Cowan Place and extending in a westerly direction following the northern kerbline for 21 metres.</i>
Luxford Street	<i>No Stopping, At All Times</i>	<i>South side, commencing 192.5 metres east of its intersection with Adelaide Road and extending in an easterly direction following the southern kerbline for 15 metres to its intersection with Rintoul Street.</i>
Riddiford Street	<i>No Stopping, At All Times</i>	<i>East side, commencing 80.5 metres north of its intersection with Emmett Street and extending in a northerly direction following the eastern kerbline for 5.5 metres.</i>
Riddiford Street	<i>No Stopping, At All Times</i>	<i>West side, commencing from its intersection with Rintoul Street and extending in a northerly direction following the western kerbline for 13 metres.</i>
Riddiford Street	<i>No Stopping, At All Times</i>	<i>West side, commencing 73.5 metres north of its intersection with Rintoul Street and extending in a northerly direction following the western kerbline for 8 metres.</i>
Riddiford Street	<i>No Stopping, At All Times</i>	<i>West side, commencing 84 metres north of its intersection with Rintoul Street and extending in a northerly direction following the western kerbline for 9 metres to its intersection with Hall Street.</i>
Rintoul Street	<i>No Stopping, At All Times</i>	<i>East side, commencing 387 metres south of its intersection with Millward Street (Grid coordinates X=1,748,868.6592m Y=5,424,861.9312m) and extending in a southerly direction following the eastern kerbline for 18 metres.</i>

We are proposing a change in your area

Rintoul Street	<i>No Stopping, At All Times</i>	<i>East side, commencing 272.5 metres south of its intersection with Millward Street (grid coordinates x=1748868.5 m, y=5424861.6 m), and extending in a southerly direction following the eastern kerbline for 18 metres.</i>
Rintoul Street	<i>No Stopping, At All Times</i>	<i>West side, commencing 185 metres north of its intersection with Waripori Street and extending in a northerly direction following the western kerbline for 24 metres.</i>
Rintoul Street	<i>No Stopping, At All Times</i>	<i>East side, commencing from its intersection with Millward Street and extending in a northerly direction following the eastern kerbline for 6 metres.</i>
Rintoul Street	<i>No Stopping, At All Times</i>	<i>East side, commencing from its intersection with Millward Street and extending in a southerly direction following the eastern kerbline for 6 metres.</i>
Rintoul Street	<i>No Stopping, At All Times</i>	<i>West side, commencing 185 metres north of its intersection with Waripori Street and extending in a northerly direction following the western kerbline for 18 metres.</i>
Rintoul Street	<i>No Stopping, At All Times</i>	<i>East side, commencing 68.5 metres south of its intersection with Millward Street and extending in a southerly direction following the eastern kerbline for 9.5 metres.</i>
Rintoul Street	<i>No Stopping, At All Times</i>	<i>East side, commencing 528 metres south of its intersection with Millward Street and extending in a southerly direction following the eastern kerbline for 9.5 metres to its intersection with Waripori Street.</i>
Rintoul Street	<i>No Stopping, At All Times</i>	<i>West side, commencing from its intersection with Stoke Street and extending in a southerly direction following the western kerbline for 1 metres.</i>
Rintoul Street	<i>No Stopping, At All Times</i>	<i>West side, commencing from its intersection with Waripori Street and extending in a southerly direction following the western kerbline for 8 metres.</i>

We are proposing a change in your area

Rintoul Street	<i>No Stopping, At All Times</i>	<i>West side, commencing 92.5 metres south of its intersection with Waripori Street and extending in a southerly direction following the western kerbline for 11.5 metres to its intersection with Luxford Street.</i>
Rintoul Street	<i>No Stopping, At All Times</i>	<i>West side, commencing from its intersection with Luxford Street and extending in a southerly direction following the western kerbline for 8 metres.</i>
Rintoul Street	<i>No Stopping, At All Times</i>	<i>West side, commencing 78.5 metres south of its intersection with Luxford Street and extending in a southerly direction following the western kerbline for 5 metres.</i>
Rintoul Street	<i>No Stopping, At All Times</i>	<i>West side, commencing from its intersection with Brixham Way and extending in a southerly direction following the western kerbline for 94 metres.</i>
Rintoul Street	<i>No Stopping, At All Times</i>	<i>West side, commencing 85 metres south of its intersection with Waripori Street and extending in an southerly direction following the western kerbline for 7.5 metres.</i>
Rintoul Street	<i>No Stopping, At All Times</i>	<i>West side, commencing from its intersection with Luxford Street and extending in a northerly direction following the western kerbline for 21.5 metres.</i>
Rintoul Street	<i>No Stopping, At All Times</i>	<i>East side, commencing 203.5 metres north of its intersection with Millward Street and extending in a northerly direction following the eastern kerbline for 22.5 metres.</i>
Rintoul Street	<i>No Stopping, At All Times</i>	<i>West side, commencing 50.5 metres north of its intersection with Colombo Street and extending in a northerly direction following the western kerbline for 8.5 metres.</i>
Rintoul Street	<i>No Stopping, At All Times</i>	<i>East side, commencing 3 metres from its intersection with northern kerbline of Colombo Street and extending in a southerly direction following the eastern kerbline for 14.3 metres</i>

We are proposing a change in your area

Rintoul Street	<i>No Stopping, At All Times</i>	<i>West side, commencing 35.2 metres north of its intersection with Colombo Street and extending in a northerly direction following the western kerbline for 14.3 metres</i>
Rintoul Street	<i>No Stopping, At All Times</i>	<i>East side, commencing 6.8 metres south of its intersection with Te Wharepouri Street (Grid coordinates x= 1,748,811.00m, y= 5,424,320.44m) and extending in a southerly direction following the eastern kerb line for 29 metres.</i>

We are proposing a change in your area

Add to Schedule D (No Stopping) of the Traffic Restrictions Schedule

Street Name	Restriction Type	Resolution Type
Adelaide Road	<i>No Stopping – At All Times</i>	<i>East side, commencing 52 metres south of its intersection with Luxford Street (Grid coordinates x= 1,748,589.7 m, y= 5,424,208.4 m), and extending in a southerly direction following the eastern kerb line for 31.5 metres to its intersection with Herald Street.</i>
Adelaide Road	<i>No Stopping – At All Times</i>	<i>East side, commencing 53 metres south of its intersection with Herald Street (Grid coordinates x= 1748582.57 m, y= 5424117.19 m), and extending in a southerly direction following the eastern kerb line for 10 metres.</i>
Adelaide Road	<i>No Stopping – At All Times</i>	<i>East side, commencing 78 metres south of its intersection with Herald Street (Grid coordinates x= 1748582.57 m, y= 5424117.19 m), and extending in a southerly direction following the eastern kerb line for 50.5 metres.</i>
Adelaide Road	<i>No Stopping – At All Times</i>	<i>East side, commencing 171 metres south of its intersection with Herald Street (Grid coordinates x= 1748582.57 m, y= 5424117.19 m), and extending in a southerly direction following the eastern kerb line for 93 metres to its intersection with Dawson Street.</i>
Adelaide Road	<i>No Stopping – At All Times</i>	<i>East side, commencing at its intersection with Dawson Street (Grid coordinates x= 1748566.51 m, y= 5423845.54 m), and extending in a southerly direction following the eastern kerb line for 64 metres.</i>
Adelaide Road	<i>No Stopping – At All Times</i>	<i>East side, commencing 67 metres south of its intersection with Dawson Street (Grid coordinates x= 1748566.51 m, y= 5423845.54 m), and extending in a southerly direction following the eastern kerb line for 8 metres.</i>
Adelaide Road	<i>No Stopping – At All Times</i>	<i>East side, commencing 90 metres south of its intersection with Dawson Street (Grid coordinates x= 1748566.51 m, y= 5423845.54 m), and extending in a southerly direction following the eastern kerb line for 99 metres.</i>

We are proposing a change in your area

Adelaide Road	<i>No Stopping – At All Times</i>	<i>East side, commencing 388 metres south of its intersection with Dawson Street (Grid coordinates x= 1748566.51 m, y= 5423845.54 m), and extending in a southerly direction following the eastern kerb line for 17 metres.</i>
Adelaide Road	<i>No Stopping – At All Times</i>	<i>East side, commencing 420 metres south of its intersection with Dawson Street (Grid coordinates x= 1748566.51 m, y= 5423845.54 m), and extending in a southerly direction following the eastern kerb line for 9 metres.</i>
Adelaide Road	<i>No Stopping – At All Times</i>	<i>West side, commencing at its intersection with The Parade (Grid coordinates x= 1748471.26 m, y= 5423294.34 m), and extending in a northerly direction following the western kerb line for 173 metres.</i>
Adelaide Road	<i>No Stopping – At All Times</i>	<i>West side, commencing 176 metres north of its intersection with The Parade (Grid coordinates x= 1748471.26 m, y= 5423294.34 m), and extending in a northerly direction following the western kerb line for 13 metres.</i>
Adelaide Road	<i>No Stopping – At All Times</i>	<i>West side, commencing 204 metres north of its intersection with The Parade (Grid coordinates x= 1748471.26 m, y= 5423294.34 m), and extending in a northerly direction following the western kerb line for 229 metres.</i>
Adelaide Road	<i>No Stopping – At All Times</i>	<i>West side, commencing 463 metres north of its intersection with The Parade (Grid coordinates x= 1748471.26 m, y= 5423294.34 m), and extending in a northerly direction following the western kerb line for 30 metres.</i>
Adelaide Road	<i>No Stopping – At All Times</i>	<i>West side, commencing 496 metres north of its intersection with The Parade (Grid coordinates x= 1748471.26 m, y= 5423294.34 m), and extending in a northerly direction following the western kerb line for 12 metres.</i>
Adelaide Road	<i>No Stopping – At All Times</i>	<i>West side, commencing 523 metres north of its intersection with The Parade (Grid coordinates x= 1748471.26 m, y= 5423294.34 m), and extending in a northerly direction following the western kerb line for 16.5 metres to its intersection with Duppa Street.</i>

We are proposing a change in your area

Adelaide Road	<i>No Stopping – At All Times</i>	<i>West side, commencing at its intersection with Duppa Street (Grid coordinates x= 1748556.5 m, y= 5423831.6 m), and extending in a northerly direction following the western kerb line for 31 metres to its intersection with Akatea Street.</i>
Adelaide Road	<i>No Stopping – At All Times</i>	<i>West side, commencing at its intersection with Akatea Street (Grid coordinates x= 1748558.6 m, y= 5423879.1 m), and extending in a northerly direction following the western kerb line for 68.5 metres.</i>
Adelaide Road	<i>No Stopping – At All Times</i>	<i>West side, commencing at its intersection with Chilka Street (Grid coordinates x= 1748564.18 m, y= 5423961.41 m), and extending in a northerly direction following the western kerb line for 156.5 metres to its intersection with Britomart Street.</i>
Adelaide Road	<i>No Stopping – At All Times</i>	<i>West side, commencing at its intersection with Britomart Street (Grid coordinates x= 1748573.84 m, y= 5424127.51 m), and extending in a northerly direction following the western kerb line for 30.5 metres.</i>
Adelaide Road	<i>No Stopping – At All Times</i>	<i>West side, commencing 36.5 metres north of its intersection with Britomart Street (Grid coordinates x= 1748573.84 m, y= 5424127.51 m), and extending in a northerly direction following the western kerb line for 12 metres.</i>
Dover Street	<i>No Stopping – At All Times</i>	<i>South side, commencing at its intersection with Adelaide Road (Grid coordinates x= 1748483.14 m, y= 5423286.96 m), and extending in an easterly direction following the southern kerb line for 7 metres.</i>
Luxford Street	<i>No Stopping – At All Times</i>	<i>South side, commencing at its intersection with Rintoul Street (Grid coordinates X = 1748794.73m Y= 5424199.75m) and extending in a westerly direction following the southern kerbline for 173 metres.</i>
Luxford Street	<i>No Stopping – At All Times</i>	<i>North side, commencing at its intersection with Adelaide Road (Grid coordinates X = 1748697.21m Y= 5424216.30m) and extending in an easterly direction following the northern kerbline for 105.5 metres to its intersection with Cowan Place.</i>

We are proposing a change in your area

Luxford Street	<i>No Stopping – At All Times</i>	<i>North side, commencing at its intersection with Cowan Place (Grid coordinates X = 1748858.91m Y= 5424222.61m) and extending in an easterly direction following the northern kerbline for 88 metres to its intersection with Rintoul Street.</i>
Riddiford Street	<i>No Stopping – At All Times</i>	<i>East side, commencing at its intersection with Mein Street (Grid coordinates X = 1748927.036m Y= 5425196.076m) and extending in a southerly direction following the eastern kerbline for 92 metres to its intersection with Emmett Street.</i>
Riddiford Street	<i>No Stopping – At All Times</i>	<i>West side, commencing at its intersection with Rintoul Street (Grid coordinates X = 1748925.08m Y= 5425102.36m) and extending in a northerly direction following the western kerbline for 24.5 metres</i>
Riddiford Street	<i>No Stopping – At All Times</i>	<i>West side, commencing 76m north of its intersection with Rintoul Street (Grid coordinates X = 1748925.08m Y= 5425102.36m) and extending in a northerly direction following the western kerbline for 24 metres to its intersection with Hall Street</i>
Rintoul Street	<i>No Stopping – At All Times</i>	<i>East side, commencing at its intersection with Riddiford Street (Grid coordinates X = 1748926.455m Y= 5425084.543m) and extending in a southerly direction following the eastern kerbline for 30 metres.</i>
Rintoul Street	<i>No Stopping – At All Times</i>	<i>East side, commencing 45 metres south of its intersection with Riddiford Street (Grid coordinates X = 1748926.455m Y = 5425084.543m) and extending in a southerly direction following the eastern kerbline for 115.5 metres.</i>
Rintoul Street	<i>No Stopping – At All Times</i>	<i>East side, commencing 167.5 metres south of its intersection with Riddiford Street (Grid coordinates X = 1748926.455m Y = 5425084.543m) and extending in a southerly direction following the eastern kerbline for 49 metres to its intersection with Millward Street.</i>
Rintoul Street	<i>No Stopping – At All Times</i>	<i>East side, commencing at its intersection with Millward Street (Grid coordinates X = 1748870.022m Y = 5424862.296m) and extending in a southerly direction following the eastern kerbline for 77.5 metres.</i>

We are proposing a change in your area

Rintoul Street	<i>No Stopping – At All Times</i>	<i>East side, commencing 92.5 metres south of its intersection with Millward Street (Grid coordinates X = 1748870.022m Y = 5424862.296m) and extending in a southerly direction following the eastern kerbline for 246 metres.</i>
Rintoul Street	<i>No Stopping – At All Times</i>	<i>East side, commencing 341.5 metres south of its intersection with Millward Street (Grid coordinates X = 1748870.022m Y = 5424862.296m) and extending in a southerly direction following the eastern kerbline for 18 metres.</i>
Rintoul Street	<i>No Stopping – At All Times</i>	<i>East side, commencing 374.5 metres south of its intersection with Millward Street (Grid coordinates X = 1748870.022m Y = 5424862.296m) and extending in a southerly direction following the eastern kerbline for 9 metres.</i>
Rintoul Street	<i>No Stopping – At All Times</i>	<i>East side, commencing 395.5 metres south of its intersection with Millward Street (Grid coordinates X = 1748870.022m Y = 5424862.296m) and extending in a southerly direction following the eastern kerbline for 29.5 metres.</i>
Rintoul Street	<i>No Stopping – At All Times</i>	<i>East side, commencing 440 metres south of its intersection with Millward Street (Grid coordinates X = 1748870.022m Y = 5424862.296m) and extending in a southerly direction following the eastern kerbline for 9 metres.</i>
Rintoul Street	<i>No Stopping – At All Times</i>	<i>East side, commencing 484 metres south of its intersection with Millward Street (Grid coordinates X = 1748870.022m Y = 5424862.296m) and extending in a southerly direction following the eastern kerbline for 10.5 metres.</i>
Rintoul Street	<i>No Stopping – At All Times</i>	<i>East side, commencing 22.5m south of its intersection with Te Wharepōuri Street (Grid coordinates X = 1748810.876m Y = 5424320.190m) and extending in a southerly direction following the eastern kerbline for 20.5 metres.</i>
Rintoul Street	<i>No Stopping – At All Times</i>	<i>East side, commencing 58 metres south of its intersection with Te Wharepōuri Street (Grid coordinates X = 1748810.876m Y = 5424320.190m) and extending in a southerly direction following the eastern kerbline for 12.5 metres.</i>

We are proposing a change in your area

Rintoul Street	<i>No Stopping – At All Times</i>	<i>East side, commencing 87.5 metres south of its intersection with Te Wharepōuri Street (Grid coordinates X = 1748810.876m Y = 5424320.190m) and extending in a southerly direction following the eastern kerbline for 28.5 metres.</i>
Rintoul Street	<i>No Stopping – At All Times</i>	<i>West side, commencing 55 metres north of its intersection with Herald Street (Grid coordinates X = 1748790.05m Y = 5424114.60m) and extending in a northerly direction following the western kerbline for 25 metres.</i>
Rintoul Street	<i>No Stopping – At All Times</i>	<i>West side, commencing at its intersection with Luxford Street (Grid coordinates X = 1748795.14m Y = 5424210.78m) and extending in a northerly direction following the western kerbline for 110.5 metres to its intersection with Te Wharepōuri Street.</i>
Rintoul Street	<i>No Stopping – At All Times</i>	<i>West side, commencing at its intersection with Te Wharepōuri Street (Grid coordinates X = 1748803.431m Y = 5424328.631m) and extending in a northerly direction following the western kerbline for 23 metres.</i>
Rintoul Street	<i>No Stopping – At All Times</i>	<i>West side, commencing 38 metres north of its intersection with Te Wharepōuri Street (Grid coordinates X = 1748803.431m Y = 5424328.631m) and extending in a northerly direction following the western kerbline for 28 metres.</i>
Rintoul Street	<i>No Stopping – At All Times</i>	<i>West side, commencing 69 metres north of its intersection with Te Wharepōuri Street (Grid coordinates X = 1748803.431m Y = 5424328.631m) and extending in a northerly direction following the western kerbline for 127.5 metres.</i>
Rintoul Street	<i>No Stopping – At All Times</i>	<i>West side, commencing 196.5 metres north of its intersection with Te Wharepōuri Street (Grid coordinates X = 1748803.431m Y = 5424328.631m) and extending in a northerly direction following the western kerbline for 12.5 metres.</i>
Rintoul Street	<i>No Stopping – At All Times</i>	<i>West side, commencing 224 metres north of its intersection with Te Wharepōuri Street (Grid coordinates X = 1748803.431m Y = 5424328.631m) and extending in a northerly direction following the western kerbline for 9 metres.</i>

We are proposing a change in your area

Rintoul Street	<i>No Stopping – At All Times</i>	<i>West side, commencing 275 metres north of its intersection with Te Wharepōuri Street (Grid coordinates X = 1748803.431m Y = 5424328.631m) and extending in a northerly direction following the western kerbline for 41 metres.</i>
Rintoul Street	<i>No Stopping – At All Times</i>	<i>West side, commencing 361 metres north of its intersection with Te Wharepōuri Street (Grid coordinates X = 1748803.431m Y = 5424328.631m) and extending in a northerly direction following the western kerbline for 32 metres.</i>
Rintoul Street	<i>No Stopping – At All Times</i>	<i>West side, commencing 430 metres north of its intersection with Te Wharepōuri Street (Grid coordinates X = 1748803.431m Y = 5424328.631m) and extending in a northerly direction following the western kerbline for 8.5 metres.</i>
Rintoul Street	<i>No Stopping – At All Times</i>	<i>West side, commencing 442.5 metres north of its intersection with Te Wharepōuri Street (Grid coordinates X = 1748803.431m Y = 5424328.631m) and extending in a northerly direction following the western kerbline for 16.5 metres.</i>
Rintoul Street	<i>No Stopping – At All Times</i>	<i>West side, commencing 474 metres north of its intersection with Te Wharepōuri Street (Grid coordinates X = 1748803.431m Y = 5424328.631m) and extending in a northerly direction following the western kerbline for 8.5 metres to its intersection with Stoke Street.</i>
Rintoul Street	<i>No Stopping – At All Times</i>	<i>West side, commencing 35 metres north of its intersection with Colombo Street (Grid coordinates X = 1748902.93m Y = 5425035.04m) and extending in a northerly direction following the western kerbline for 32.5 metres to its intersection with Riddiford Street.</i>
The Parade	<i>No Stopping – At All Times</i>	<i>West side, commencing at its intersection with Dee Street (Grid coordinates x= 1748444.96 m, y= 5423187.90 m), and extending in a northerly direction following the western kerb line for 20.5 metres.</i>
The Parade	<i>No Stopping – At All Times</i>	<i>West side, commencing 35.5 metres north of its intersection with Dee Street (Grid coordinates x= 1748444.96 m, y= 5423187.90 m), and extending in a northerly direction following the western</i>

We are proposing a change in your area

		<i>kerb line for 74.5 metres to its intersection with Adelaide Road.</i>
The Parade	<i>No Stopping – At All Times</i>	<i>East side, commencing at its intersection with Dover Street (Grid coordinates x= 1748483.14 m, y= 5423286.96 m), and extending in a southerly direction following the eastern kerb line for 73 metres.</i>
The Parade	<i>No Stopping – At All Times</i>	<i>East side, commencing 85 metres south of its intersection with Dover Street (Grid coordinates x= 1748483.14 m, y= 5423286.96 m), and extending in a southerly direction following the eastern kerb line for 6.5 metres.</i>

We are proposing a change in your area

Add to Schedule G (Give Way and Stop) of the Traffic Restrictions Schedule

Column One	Column Two	Column Three
<i>Akatea Street</i>	<i>Give Way control</i>	<i>East bound, at its intersection with Adelaide Road.</i>
<i>Colombo Street</i>	<i>Stop control</i>	<i>East bound, at its intersection with Rintoul Street.</i>
<i>Dawson Street</i>	<i>Give Way control</i>	<i>West bound, at its intersection with Adelaide Road.</i>
<i>Dover Street</i>	<i>Give Way control</i>	<i>West bound, at its intersection with Adelaide Road.</i>
<i>Duppa Street</i>	<i>Give Way control</i>	<i>East bound, at its intersection with Adelaide Road.</i>

We are proposing a change in your area

Add to Schedule H (Pedestrian crossing) of the Traffic Restrictions Schedule

Column One	Column Two	Column Three
Adelaide Road	<i>Pedestrian Crossing</i>	<i>East side, commencing 64 metres south of its intersection with Dawson Street (Grid coordinates x= 1748566.51 m, y= 5423845.54 m), and extending in a southerly direction following the eastern kerb line for 3 metres.</i>
Rintoul Street	<i>Pedestrian Crossing</i>	<i>East side, commencing 338.5 metres south of its intersection with Millward Street (Grid coordinates X = 1748870.022m Y = 5424862.296m) and extending in a southerly direction following the eastern kerbline for 3 metres.</i>
Rintoul Street	<i>Pedestrian Crossing</i>	<i>East side, commencing 116 metres south of its intersection with Te Wharepōuri Street (Grid coordinates X = 1748810.876m Y = 5424320.190m) and extending in a southerly direction following the eastern kerbline for 3 metres.</i>

Add to Schedule I (Cycle Lane) of the Traffic Restrictions Schedule

Street Name	Restriction Type	Resolution Type
Adelaide Road	<i>Cycle Lane – At All Times</i>	<i>East side, commencing 171 metres south of its intersection with Herald Street (Grid coordinates x= 1748582.57 m, y= 5424117.19 m), and extending in a southerly direction following the eastern kerb line for 93 metres to its intersection with Dawson Street.</i>
Adelaide Road	<i>Cycle Lane – At All Times</i>	<i>East side, commencing at its intersection with Dawson Street (Grid coordinates x= 1748566.51 m, y= 5423845.54 m), and extending in a southerly direction following the eastern kerb line for 64 metres.</i>
Adelaide Road	<i>Cycle Lane – At All Times</i>	<i>East side, commencing 67 metres south of its intersection with Dawson Street (Grid coordinates x= 1748566.51 m, y= 5423845.54 m), and extending in a southerly direction following the eastern kerb line for 8 metres.</i>

We are proposing a change in your area

Adelaide Road	<i>Cycle Lane – At All Times</i>	<i>East side, commencing 90 metres south of its intersection with Dawson Street (Grid coordinates x= 1748566.51 m, y= 5423845.54 m), and extending in a southerly direction following the eastern kerb line for 99 metres.</i>
Adelaide Road	<i>Cycle Lane – At All Times</i>	<i>West side, commencing at its intersection with The Parade (Grid coordinates x= 1748471.26 m, y= 5423294.34 m), and extending in a northerly direction following the western kerb line for 173 metres.</i>
Adelaide Road	<i>Cycle Lane – At All Times</i>	<i>West side, commencing 176 metres north of its intersection with The Parade (Grid coordinates x= 1748471.26 m, y= 5423294.34 m), and extending in a northerly direction following the western kerb line for 13 metres.</i>
Adelaide Road	<i>Cycle Lane – At All Times</i>	<i>West side, commencing 204 metres north of its intersection with The Parade (Grid coordinates x= 1748471.26 m, y= 5423294.34 m), and extending in a northerly direction following the western kerb line for 289 metres.</i>
Adelaide Road	<i>Cycle Lane – At All Times</i>	<i>West side, commencing 496 metres north of its intersection with The Parade (Grid coordinates x= 1748471.26 m, y= 5423294.34 m), and extending in a northerly direction following the western kerb line for 12 metres.</i>
Adelaide Road	<i>Cycle Lane – At All Times</i>	<i>West side, commencing 523 metres north of its intersection with The Parade (Grid coordinates x= 1748471.26 m, y= 5423294.34 m), and extending in a northerly direction following the western kerb line for 16.5 metres to its intersection with Duppa Street.</i>
Adelaide Road	<i>Cycle Lane – At All Times</i>	<i>West side, commencing at its intersection with Duppa Street (Grid coordinates x= 1748556.5 m, y= 5423831.6 m), and extending in a northerly direction following the western kerb line for 31 metres to its intersection with Akatea Street.</i>
Adelaide Road	<i>Cycle Lane – At All Times</i>	<i>West side, commencing at its intersection with Akatea Street (Grid coordinates x= 1748558.6 m, y= 5423879.1 m), and extending in a northerly direction following the western kerb line for 68.5 metres.</i>

We are proposing a change in your area

Adelaide Road	<i>Cycle Lane – At All Times</i>	<i>West side, commencing at its intersection with Chilka Street (Grid coordinates x= 1748564.18 m, y= 5423961.41 m), and extending in a northerly direction following the western kerb line for 156.5 metres to its intersection with Britomart Street.</i>
Adelaide Road	<i>Shared Path</i>	<i>West side, commencing 66.5 metres north of its intersection with Chilka Street (Grid coordinates x= 1748564.18 m, y= 5423961.41 m), and extending in a northerly direction following the western kerb line for 16 metres.</i>
Luxford Street	<i>Cycle Lane – At All Times</i>	<i>South side, commencing at its intersection with Rintoul Street (Grid coordinates X = 1748794.73m Y= 5424199.75m) and extending in a westerly direction following the southern kerbline for 173 metres.</i>
Luxford Street	<i>Cycle Lane – At All Times</i>	<i>North side, commencing at its intersection with Adelaide Road (Grid coordinates X = 1748697.21m Y= 5424216.30m) and extending in an easterly direction following the northern kerbline for 105.5 metres to its intersection with Cowan Place.</i>
Luxford Street	<i>Cycle Lane – At All Times</i>	<i>North side, commencing at its intersection with Cowan Place (Grid coordinates X = 1748858.91m Y= 5424222.61m) and extending in an easterly direction following the northern kerbline for 88 metres to its intersection with Rintoul Street.</i>
Riddiford Street	<i>Cycle Lane – At All Times</i>	<i>East side, commencing at its intersection with Mein Street (Grid coordinates X = 1748927.036m Y= 5425196.076m) and extending in a southerly direction following the eastern kerbline for 92 metres to its intersection with Emmett Street.</i>
Rintoul Street	<i>Cycle Lane – At All Times</i>	<i>East side, commencing 45 metres south of its intersection with Riddiford Street (Grid coordinates X = 1748926.455m Y = 5425084.543m) and extending in a southerly direction following the eastern kerbline for 115.5 metres.</i>
Rintoul Street	<i>Cycle Lane – At All Times</i>	<i>East side, commencing 167.5 metres south of its intersection with Riddiford Street (Grid coordinates X = 1748926.455m Y = 5425084.543m) and extending in a southerly direction following the eastern kerbline for 49 metres to its intersection with Millward Street.</i>

We are proposing a change in your area

Rintoul Street	<i>Cycle Lane – At All Times</i>	<i>East side, commencing at its intersection with Millward Street (Grid coordinates X = 1748870.022m Y = 5424862.296m) and extending in a southerly direction following the eastern kerbline for 77.5 metres.</i>
Rintoul Street	<i>Cycle Lane – At All Times</i>	<i>East side, commencing 92.5 metres south of its intersection with Millward Street (Grid coordinates X = 1748870.022m Y = 5424862.296m) and extending in a southerly direction following the eastern kerbline for 246 metres.</i>
Rintoul Street	<i>Cycle Lane – At All Times</i>	<i>West side, commencing at its intersection with Luxford Street (Grid coordinates X = 1748795.14m Y = 5424210.78m) and extending in a northerly direction following the western kerbline for 110.5 metres to its intersection with Te Wharepōuri Street.</i>
Rintoul Street	<i>Cycle Lane – At All Times</i>	<i>West side, commencing at its intersection with Te Wharepōuri Street (Grid coordinates X = 1748803.431m Y = 5424328.631m) and extending in a northerly direction following the western kerbline for 23 metres.</i>
Rintoul Street	<i>Cycle Lane – At All Times</i>	<i>West side, commencing 38 metres north of its intersection with Te Wharepōuri Street (Grid coordinates X = 1748803.431m Y = 5424328.631m) and extending in a northerly direction following the western kerbline for 28 metres.</i>
Rintoul Street	<i>Cycle Lane – At All Times</i>	<i>West side, commencing 69 metres north of its intersection with Te Wharepōuri Street (Grid coordinates X = 1748803.431m Y = 5424328.631m) and extending in a northerly direction following the western kerbline for 127.5 metres.</i>
The Parade	<i>Cycle Lane – At All Times</i>	<i>East side, commencing at its intersection with Dover Street (Grid coordinates x= 1748483.14 m, y= 5423286.96 m), and extending in a southerly direction following the eastern kerb line for 73 metres.</i>
The Parade	<i>Cycle Lane – At All Times</i>	<i>West side, commencing 35.5 metres north of its intersection with Dee Street (Grid coordinates x= 1748444.96 m, y= 5423187.90 m), and extending in a northerly direction following the western kerb line for 74.5 metres to its intersection with Adelaide Road.</i>

We are proposing a change in your area

Prepared By: Nicola Mitchell **(Project Lead)**
Reviewed By: Evandro Scherer **(Team Leader Traffic & Resolutions)**

Reviewed By: Soon Teck Kong **(Engineering and Operations Manager)**

Approved By:
Date: